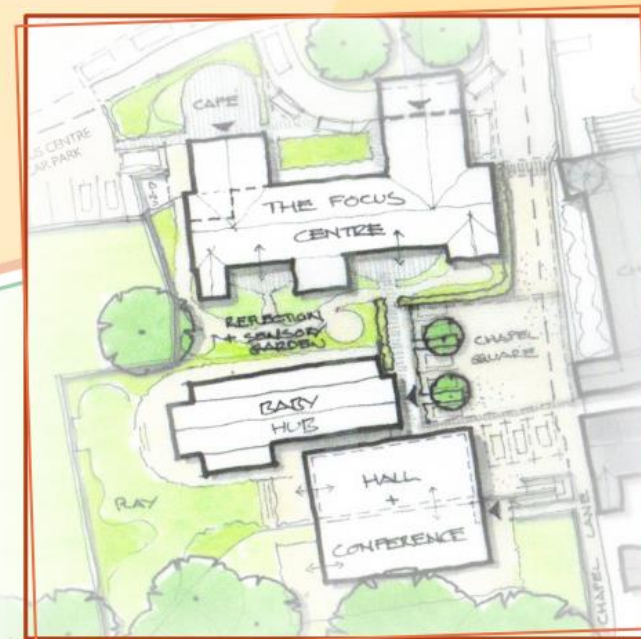


# THE FOCUS CENTRE



Part of Dorset's  
**Family Hub**  
network





**Swanage & Purbeck  
Development Trust**

Development Trusts are community owned, based, and led  
engaged in the economic, environmental and social  
regeneration in a local area (Wikipedia)

## **SWANAGE AND PURBECK DEVELOPMENT TRUST**

We are a Charity, formed in 2013, managed by a Board of Trustees from the local Community. Working in and with the community has enabled us to identify local needs and introduce strategies to help protect spaces and places, which may otherwise be lost. These buildings and sites are then converted for intensified community use. A main objective is to ensure that local “unmet” needs are matched by services introduced to community owned buildings.

**“Managed by the Community for the Community”**

# “Managed by the Community for the Community”

## RECENT PROJECTS

### The Centre

Acquired by Asset Transfer from Dorset County Council in 2016, following the closure of the Youth Club the building was totally refurbished and a new roof put on. The building is now used as a much-needed, childcare nursery. The Hall was converted for music events and is now a popular venue for Blues and Jazz Festivals.



### Herston Village Hall

We took on the ownership and management of the Hall, as it represents an important Community Asset for local people. There was a risk that it could close down, which is why we stepped in. It is now used for a range of local activities including a Community Café, a toddler group, and Swanage Youth Club.

Redevelopment for an extended and improved building is planned in the next 2 years.





## OTHER SPDT GROUP FUNCTIONS

- **Community garden**
- Dementia Friendly support
- **Supporting people living in isolation**
- Stroke Club activities
- **Swanage Youth Club**
- Seahorses Toddler Group
- **Avoiding food waste + local distribution**
- Defibrillator provision and maintenance
- **MS support**
- Swanage Skatepark regeneration

### **Greengage Community Garden**

Dementia Friendly Purbeck

### **Linking Lives**

Swanage Stroke Club

### **Herston Village Hall**

Herston Village Hall

### **Food for Thought Purbeck & Herston Village Hall**

Swanage Community Defibrillator Project

### **MS Purbeck**

Swanage Skatepark Community Project



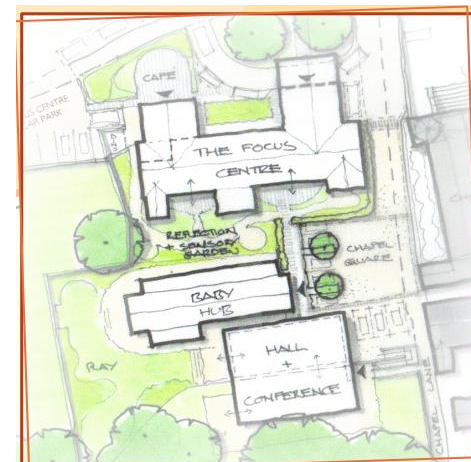
Swanage & Purbeck  
Development Trust



## *The Vision*

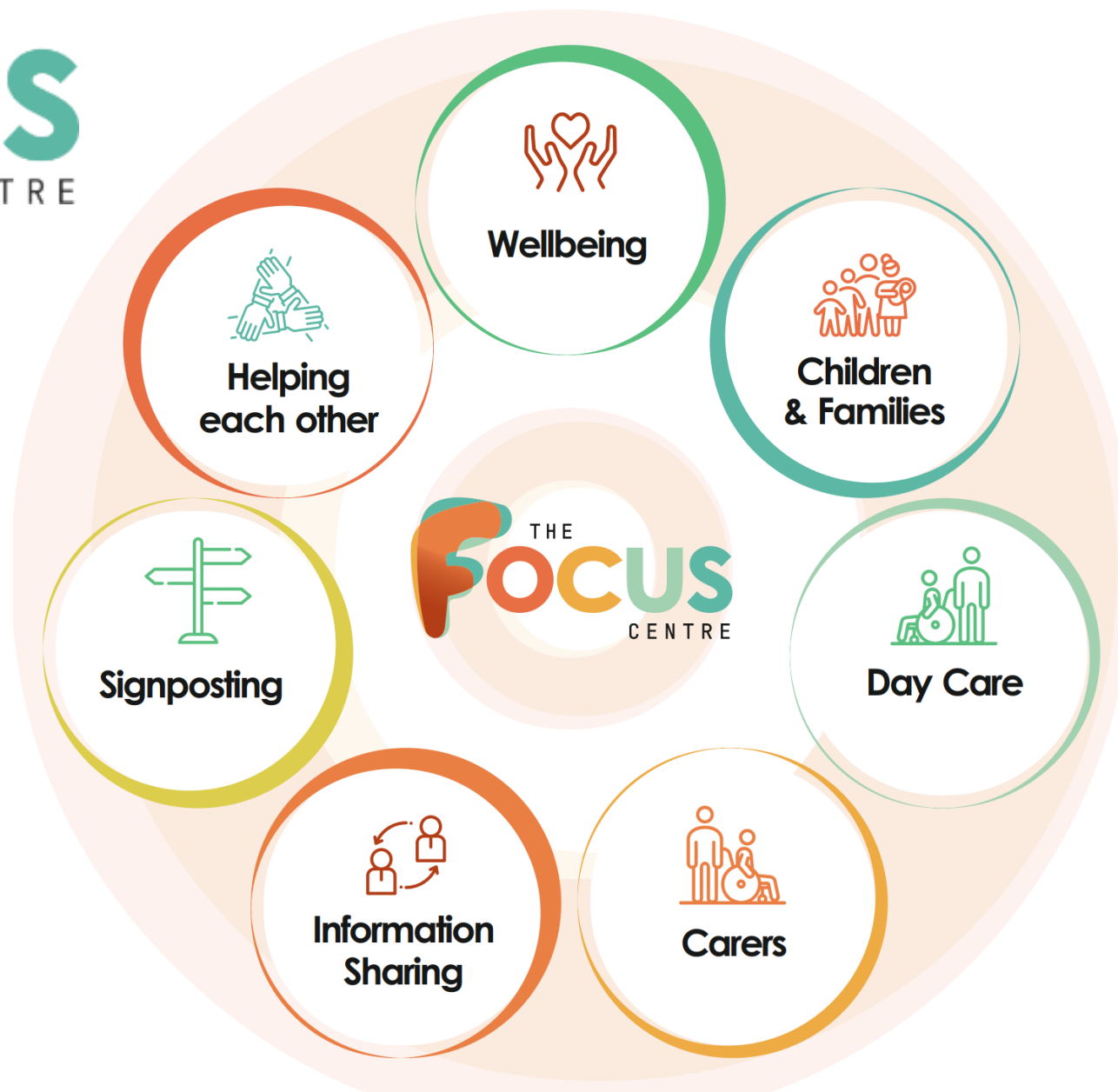
An integrated, inter-generational Wellbeing complex serving the Community of Swanage and surrounding villages, for all age groups.

**The Focus Centre**, managed by community Charity group, Swanage and Purbeck Development Trust, will incorporate a Family Hub, Explorers Childcare Group, a Day Care Centre, and a Wellbeing Information Centre (Welcome Lounge).



Part of Dorset's  
**Family Hub**  
network







## FUTURE PLANS 2024 TO 2027





## WHY DO WE NEED A WELCOME LOUNGE?

There is nowhere to go in Swanage, and surrounding villages, to seek “**face to face**” **guidance** on where to find information on:

- issues arising in the family,
- activities to help with personal Wellbeing,
- coping with living in isolation,
- for concerns about mental health of yourself and others,



Very often just **seeing a friendly face and meeting someone**, who has the knowledge of **where to seek advice**, can **relieve the stress and anxiety** instead of bottling up the concerns.



Part of Dorset's  
**Family Hub**  
network







Now



## OUR PROGRAMME



- A transitional period of assessment
- Maintain existing uses in the buildings
- Draw up plans for space to increase the number of users
- Install new security & safeguarding systems
- Open an information area (Welcome Lounge)



6 Months

- Internal alteration works to all three buildings
- Integrate the site and open garden areas
- Identifying gaps in service areas
- Invite new service users to hire space & commence use
- Rapidly expand Family Hub services locally

Part of Dorset's  
**Family Hub**  
network



## 12 Months

- Open the Community Café.
- Complete alteration works
- Continue hirings to achieve sustainability of the Centre



## 2 Years

- Business as usual
- Planning for extensions to increase capacity for local service providers



## 3 Years

- Expansion



# HOW CAN YOU HELP?



We need lots of **help from volunteers** in a **wide variety of roles** to deliver our Vision.

We can tailor the help that we need to **suit your time availability** and **your preferences**. Even just one hour occasionally can be a valuable support for us.



We **can train you up**, where necessary, and **we will provide lots of support** for you to achieve in your chosen role(s).:

## Some examples of where we need support...

- Helping at fund raising events and Community Consultations,
- Community Connectors for Wellbeing Swanage,
- Assisting in the Welcome Lounge,
- Helping at the Youth Club,
- Helping in the Focus Café, when it opens,
- Why not apply to be a Trustee? We are always looking for people with the right skills,
- Sign up to receive your newsletter and find out more,
- Give us your comments and ideas.

**Talk to us today or give us a call/email.**  
Or contact us at our website [www.sandpdf.org.uk](http://www.sandpdf.org.uk)



Scan  
me!



Part of Dorset's  
**Family Hub**  
network

