

Swanage & Purbeck Development Trust and Swanage Area Forum

NEWSLETTER

Community News from Swanage and the Surrounding Villages



Photograph © Shutterstock

Hello again and welcome to the Swanage & Purbeck Development Trust's latest (December 24/January 25) Newsletter. This issue highlights many of the local seasonal activities in our wonderful community. Why not enjoy these seasonal events while also participating and supporting them?

You can do your bit by passing this newsletter on to your friends, neighbours and other contacts. Also, if you are a member or participant in another group which does not publicise their activities in the newsletter, then why not make a contribution in our future issues?

Newsletter Coordinator: Mel Norris
Trustee Swanage & Purbeck Development Trust
email: melvyn.norris@icloud.com mobile: 07446 677924

find the newsletter at www.sandpdt.org.uk

DEADLINE

for contributions to the
February/March 2025
issue of the Newsletter

FRIDAY 17 JANUARY 2025



Swanage & Purbeck
Development Trust
Charity Reg. No. 1162662



This year, we are in full festive swing.

Get ready for the return of the spectacular '**Lighting up Lives**' event. This enchanting celebration on Swanage Pier has inspired hundreds of cherished memories. Dedicate your light to someone special today to shine brightly during December.

Join us on Friday 6th December at 5:30pm for the first night of the **Pier illuminations!**

Also in December; meet **Father Christmas and his reindeer**. The ever-popular donkeys will be returning, along with your favourite Christmas characters. Enjoy live music, entertainment and so much more!

Santa's Grotto Dates – Saturday 14th – Sunday 15th & Thursday 19th – Monday 23rd December

Also, look out for our stall on Saturday 7th December, at the Swanage Christmas Market to find out about Christmas present ideas, enter our Big Winter Raffle and have a go on the tombola!

For full information on all events and how to dedicate a light visit - www.swanagepiertrust.com/events



Swanage Disabled Club

Another successful year is coming to a close with our Christmas party at the end of November. Monday afternoons have produced a hum of activity with Scrabble, dominos, whist, rummy, cribbage games, sometimes quite noisily. The craft group have tried various new ventures, jewelry making, succulent gardening, wreathes, as well as painting, drawing and knitting.

Once a month we have been entertained by a selection of speakers and musical interludes with belly dancers, ukulele band and individual musicians. The speakers have included a representative of the National Trust talking about plans for Studland, a Swanage Lifeboat crewman, a trainer from the dogs for the hearing impaired organisation and so on, including our latest speaker on flower arranging.

Our monthly outings have included trips to various garden centres, lunch at Pine Lodge and East Dorset Golf Club, Castlepoint for retail therapy, cream tea at Manor Farm in Studland as well as our annual Christmas lunch, always in February, at the Seven Stars.



continued on next page ...

... continued from previous page

We also offer a service to wheelchair users in particular, providing transport in our specially adapted vehicle, to hospital, doctor, dentist appointments, or for special social occasions. This service is available to anyone who has difficulty using public transport but must be booked in advance. Our buses with tail-lift capability are also available for groups with disabled members. These services are offered thanks to a dedicated group of volunteers for whom we are very grateful.

Altogether another busy year including our fund-raising seafront stalls, and this year we will be at the Christmas market on 7th December selling knitwear, toys, jewelry and more, all made by our members and volunteers. Come and visit us for that special gift and help us continue the work we do in the community.



It has been a busy time at Greengage in so many ways. Last Friday saw the largest number coming to Greengage at any one time and our greenhouse is still full with peppers, chillies, pelargonium cuttings, houseplants and much more.

Our work benches have been restored and thankyou Derek, who built these benches initially, for their restoration. They are worth their weight in gold!

Les has done an amazing job in the development of one corner of Greengage so please come and look at what he's achieved.

We are now busy getting ready for our Christmas Fayre on Friday December 6th from 11 until 3. We will be having the world's only reindeer raffle(!?), Rob has been busy creating his reindeer herd, there are winter bulbs in pots, Christmas wreaths, lots of herbs and house plants and much more. We will be providing hot drinks and festive cakes etc. You will be very welcome and we look forward to seeing you there.

Our Winter break starts on December 13th and we reopen in mid February.

Our AGM and lunch is on the 17th January from 11 at Herston Hall and February will see the return of the Greengage General Knowledge team quiz ... more details later..

Come and see us whenever you can ... you will always be welcome.



Local residents are being invited to take part in a ground-breaking river restoration and flood protection project.

The call to action follows the formation of a body known as Swanage Streams Partnership – a collaboration between the National Trust, Dorset National Landscape, community group Planet Purbeck and Swanage Town Council. It is already looking at the grim state of Swanage's Swan Brook and its catchment area, which stretches to Langton Matravers, Harmans Cross and Ulwell, and the flooding risk it poses. But the group is also keen to draw in local people to help resolve issues such as drainage, pollution, nutrient levels and struggling natural habitat – making it a significant community project.

The partnership will be formally launched at The Swanage School on the evening of Tuesday November 26. And all, whether they are individuals, landowners or action groups, are invited to come along to learn about steps that will be taken and the potential for getting involved.

The need for intervention on Swan Brook is pressing. Its condition is officially classified as “poor” by the Environment Agency and it is therefore considered a failing watercourse in need of improvement. And there is a notable risk of flooding despite Swanage's alleviation infrastructure. Such waterways are sometimes known as “Cinderella” streams because they are relatively neglected compared to nationally recognised rivers such as Wareham's Frome and Piddle.

Ian Rees, Countryside Projects Manager of Dorset National Landscape, said:

“We are particularly interested in small streams like Swan Brook that aren't designated, have no spotlight on them and often aren't on anyone's agenda to look after them. So if no one else is doing it, it's up to us.”

Mr Rees said the project offers Purbeck residents a chance to “improve the health of their back garden”.

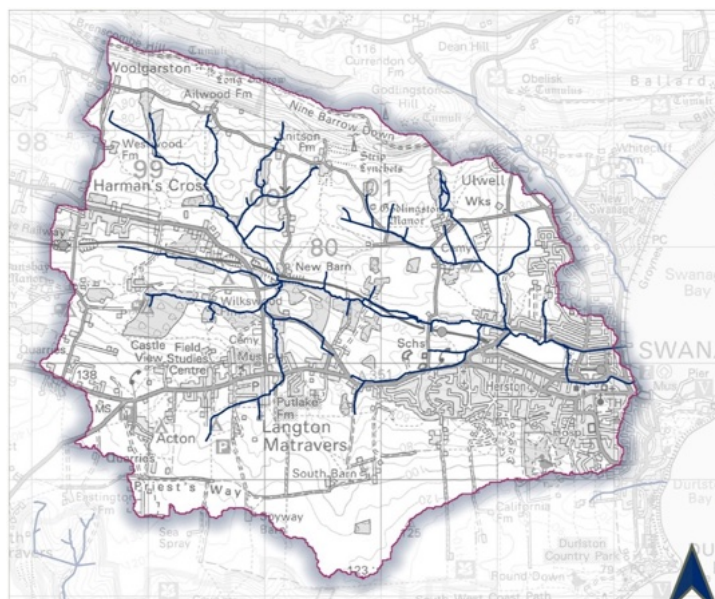
He added: *“It will get you together with a group of like-minded people to tackle an issue close to your heart. You can make a difference by improving the environment for people and for wildlife. It's good for the soul.”*

Planet Purbeck has been tasked with engaging the community in the project and raising awareness through various events such as talks, tours of existing flood defence systems and demonstrations of helpful activities that can afterwards be self-led.

Luke M Luke, Planet Purbeck's co-leader, said:

“We're proud to unite with such top-tier partners to help transform Swan Brook and surrounding streams. Their current state is pretty shocking. But with the help of the Purbeck community we hope to foster a legacy of fun and sustainable practices to rejuvenate these precious habitats.”

More information can be found at www.planetpurbeck.org.



Swan Brook and its catchment area. Picture: Dorset National Landscape.



National Trust staff monitor stream flow. Picture: David Brown.



Rare water-loving southern damselfly. Picture: Gen Crisford.



Mayday Singers
Musical Director: John Watkins

“Winter Song”
featuring
Vivaldi’s “Gloria”

Sunday 19th January, 4pm
St George’s Church,
Langton Matravers

*Tickets £8 on the door, or in advance
from Carole on 07305 740422*

Retiring collection in aid of:






SWANAGE TOWN BAND

CONCERT

Wednesday 4th December 7.30pm
Swanage Methodist Church

**FREE ADMISSION – RETIRING COLLECTION FOR
JULIA’S HOUSE AND BAND FUNDS**



**CAROLS ON THE
BANDSTAND**

Wednesday 11th December 6.30pm
**IF WET WE WILL PLAY ON WEDNESDAY 18TH
DECEMBER, WEATHER PERMITTING**

COLLECTING FOR JULIA’S HOUSE AND BAND FUNDS

follow us on Facebook for details 



INTRODUCING

**PIANO &
VOCAL
RECITAL**

*Autumn
in Love*

When & Where:
**30th November 2024, 7pm
Harman’s Cross Village Hall**

**Raising money for
Swanage and Purbeck Development Trust**

Free admission Coffee, tea & cookies Donation welcome



**The Purbeck
Christmas Tree
Festival 2024**

5th to 7th December

Emmanuel Baptist Church Swanage
For more details contact:
administrator@emmanuelbc.org.uk



Purbeck Christmas Tree Festival 



Corfe Community Kitchen

Soup 'n Pud

A choice of Soups and a Roll Followed by Puds with Custard

Corfe Castle Village Hall

Saturday December 7th 2024

12.30 – 1.45pm

Come and join local friends for a simple, healthy, filling and sustainable

Free Lunch

This venture is provided by volunteers, on a not-for-profit basis, in a friendly environment for local residents to increase community spirit. If you wish to make a donation, either of food or money please feel free but it is not obligatory.

I think November was the first time we finished up all the food with 60 people being present! Amazing for our 2nd anniversary! We welcomed several new people including 2 new volunteers to our merry band. This time we offered 3 types of soup because we were using up some left overs stored in the freezer, following our policy of using up food that would otherwise go to waste and we wanted to make space for food for upcoming events. There were also 3 different puds, the crumbles using up apples that had been donated to us by 2 lovely local people.

Soup 'n Pud has gone from strength to strength, with so many people enjoying both the food and the camaraderie. It is very encouraging that so many find it a valuable addition to village life and find comfort from the food and friendship.

In December we will of course be thinking of Christmas so we ask you to consider wearing your favourite Christmas jumper and/or hat but of course this is not obligatory. There may even be a few extra treats!

We cater for vegetarians and food allergies but if you do have a serious allergy please let us know beforehand so that we can adjust our menus to fit.

As usual we thank all our volunteers for their help and Dragons Bakery for the bread rolls. We would love to see other people joining our fun lunch and all the friendly chatter at this great Community venture.

HAPPY CHRISTMAS from all at SOUP 'N PUD.

We look forward to seeing you in the NEW YEAR when our lunches start on January 4th '25

Swanage Croquet Club South West UK Champions 2024!!

Swanage High Handicap team have recently won the SW UK Croquet final to become the 2024 Champions! Swanage beat the reigning champions, Llandaff of Cardiff in the closes of finals which was played on a neutral ground a Camerton and Peasedown near Bath. After the scheduled 20 games during a full day of play the scores were 10; 10. A doubles game final decider was then played which Swanage won to become the 2024 Champions. This is a fantastic result for the club after a very long season of matches, played both at home and away. Congratulations to the Swanage High Handicap team!



TEAM CAPTAIN MATCH REPORT - Swanage versus Llandaff 28th September 2024

The 2024 final of the South West Federation High Handicap League was a repeat of the 2023 final between Swanage and Llandaff. In 2023 Llandaff had won 12-8. This year's final was played at Camerton & Peasedown on a chilly but dry day. Heavy rain on previous days meant that the courts were soft and only three of the four available were playable. Swanage fielded a team with handicaps significantly lower than those of the Llandaff team (average 8.8 versus 11.2) so conceded many more extra turns than they received (48-5). The games in the first round were very close (7-6, 7-6 and 5-7) but later Swanage suffered a few heavy defeats leading to a final hoop score of 120-108 in Llandaff's favour. The match score remained close all day, generally level or with Swanage one game behind. Entering the final round of 5 singles games Swanage trailed 7-8. As the final round games finished the progress of the match score was 7-9, 8-9, 8-10, 9-10, 10-10; so a nail-biting finish. Competition rules required that a tied final be resolved by one further doubles game. This proceeded nip and tuck to 4-4 before an exceptional moment saw Swanage pull away. After Swanage had won hoop 9, their first shot to hoop 10 (20+ yards) passed a well-placed opponent ball to score the hoop to take a 6-4 lead. Shortly after that Swanage played the winning shot at hoop 11 to secure the trophy.

Swanage All Handicap First team also made it to the final of their SW UK league. he played their final at Swindon against arch rivals Cheltenham, who are the home of Croquet England. Swanage had recently beaten Cheltenham to become the

continued on next page ...

... continued from previous page

2022 Champions so a crunch match was in store! Again a closely contested match was played out over a full day. His time Cheltenham narrowly won 11; 9 to become champions for 2024. Both teams have now twice been champions so the scene is already set for the 2025 season!

TEAM CAPTAIN MATCH REPORT – Swanage versus Cheltenham 29th September 2024

It was a bitterly cold day when the Swanage handicap team travelled to Swindon Croquet Club for the grand final against local club Cheltenham. With heavy rain forecast later in the day it was decided to utilise all three lawns to full capacity so the match would be finished in four rounds. After the first round Swanage were trailing 1-3 and after the second 2 – 6. Uncharacteristically Swanage lost three of the four doubles games reversing the trend throughout the season. With the match being decided by the first team to win 11 games Swanage were definitely under pressure. In the event, the team dug in and won the next seven of twelve singles games which was a superb effort. In the final round Cheltenham still required one win to clinch the match, which they did leaving the final score, a very close ,11 – 9 in their favour. Disappointing for Swanage after such a commendable recovery but all players can be proud of their performance not just in this match but throughout the season. Two years ago, when Swanage played this team in the final and Swanage won the shield for the second time. Cheltenham have now also won it twice so both teams will be looking for success next season.

Swanage Food Bank



All of the Team at the Swanage Food Bank (around 30 of us!) would like to wish everyone a very Happy and Healthy Christmas-time and much joy and peace in the New Year.

We must also say a huge Thank You to all in the area who have supported us throughout the last year: it really is a team effort and we're so grateful for every gift or expression of support.

This year, once again, you've helped us to support many folks in our local communities who are struggling to put food on the table.

Despite a quieter summer, we have become very busy this autumn, and that looks set to continue into the winter too.

This festive season we welcome both **regular donations of tins, jars and packets** (well within their sell-by / use-by date, please!) as well as **Christmassy items** such as **Advent calendars** (as soon as possible!) **tins and boxes of sweets, chocolates and biscuits** (both savoury and sweet) **plus mince pies, Christmas / sponge puddings and custard**. We aim to give each individual, couple or family that we help a bag containing special Christmas items and, for the children, an Advent Calendar - very soon, of course! Please try to buy items with the longest dates possible.

Donations can be placed in the collection bins in the main shops in town (Budgens, Coop, Costcutters & Spar) or dropped off to the **Swanage Food Bank at the United Reformed Church, 112 High St BH19 2NY** (near the Spar shop) – only during opening hours, though, please: **Mondays, Wednesdays and Fridays between Midday and 2pm**.

If you find yourself to be in need of *emergency* help with food, please do phone the Swanage Food Bank on **07759 230313**. Leave us a message if we can't get to the phone – we'll get back to you as soon as we can. If help is needed on a longer-term basis, we may ask you to get a referral from an agency that knows your circumstances ie they will need to phone us on your behalf. Do remember that some folks are very reluctant to ask for help, no matter how great their need, so a little encouragement from a friend or neighbour like yourself might be useful – and we are here ready to help them.

ALCOHOLICS ANONYMOUS® is a fellowship of men and women who share their experience, strength and hope with each other that they may solve their common problem and help others to recover from alcoholism. ... Our primary purpose is to stay sober and help other alcoholics to achieve sobriety.



This is still a very unsettling time. It is stressful for many people in many new ways. Some people turn to alcohol to help them cope and get through it. This can be more of a danger than a help to some of us. If you think you have a problem with alcohol we can help:

IF DRINK IS COSTING YOU MORE THAN MONEY then we can help you.
Please telephone our free Helpline today: 0800 917 7650

SWANAGE ROTARY GETS READY FOR CHRISTMAS!

Swanage & Purbeck Rotary is part of a global network of 1.2 million men and women who are united in their determination to act to make a difference. Our Christmas programme is a perfect example where we raise money for projects to enrich the lives of others but also generate community spirit. Here's a summary of what we are up to this year!

Christmas Market

Rotary's ever popular Christmas Market will this year be held on Saturday 7 December. We'll be in Station Road and Institute Road, starting at 10.00 and finishing by 4.00. There will be sacksful of Christmas gifts, festive music, food and drink, and the unmissable (and FREE!) Santa's Grotto for children. Please note traffic on Kings Road East will be two-way on this Saturday and subject to a speed limit of 20 mph for pedestrian safety.

Christmas Shop

This year's Christmas Shop will be at 12 Station Road. As ever there will be a wonderful selection of festive fare including jams, pickles and home-baked puddings and cakes.

Christmas Mail

We can deliver your Christmas cards to local friends and family in all BH19 post codes (plus Corfe Castle and Church Knowle) for only 50p per card! 12 Station Road will host our Swanage office which will be open on weekdays between 10am and 4pm (from 6th to 14th December). There will be additional collection boxes from 2nd to 14th December at the Swanage Information Centre on Shore Road, Studland Stores, Norden Farm Shop and Salt Pig Café @ Putlake in Langton. All mail will be delivered after 16th December.

Santa's Sleigh

Rotary's legendary Santa's Sleigh will once again be delighting children and adults as it weaves its merry way around the streets of Swanage, Langton and Corfe. There will be Christmas carols (of course), sweets for smiling children, and big waves from Santa as well as from our pointy-hatted elves with their collecting buckets (and credit card machines where required!!).

If you'd like to get involved as a volunteer on the sleigh or in any of our other activities please email swanagesanta@gmail.com



Santa's Sleigh schedule

Here's a day-by-day summary of where the Sleigh will be (weather permitting). Please check our Facebook page for updates.

SWANAGE

Saturday 30 November, from 15:00 Artisans on the beach and Switch on Swanage

Monday 2 December Victoria Av • Smiths Farm • Prospect Cr • Rabling Rd • Northbrook Rd • Walrond Rd • De Moulham Rd • Rempstone Rd • Cranborne Rd • Ilminster Rd • Gilbert Rd

Tuesday 3 December Kings Road W • Locarno Rd • Argyle Rd • Hanbury Rd • Court Rd • High St • Princess Rd • Howard Rd • Linden Rd • Newton Manor Cl • Cecil Rd • Morrison Rd • Hendrie Cl • Findlay Pl • Ancaster Rd • Aigburth Rd

Wednesday 4 December High St • Townsend Rd • Richmond Rd • Manwell Rd • Dr • Osborne Rd • Queens Rd • Mead • Mount Scar • Gordon Rd • Priests Rd • Hoburne Rd • Foxhill Cl • Mariners Dr • Cowlease

Thursday 5 December Ulwell Rd • Whitecliff Rd • Moor Rd • Parsons Cl • Hill Rd • Redcliffe Rd • Ballard Wy • Bay Cr • Cl • Streche Rd • Ballard Rd • James Day Md

Saturday 7 December Christmas Market - including Free Santa's Grotto! Station Rd/Institute Rd

Monday 9 December High St • Jubilee Rd • Shirley Cl • Bell Street • Marsh Way • Ash Cl • Priest's Rd • Purbeck Vw • Panorama Rd • Hillview Rd • Wills Rd

Wednesday 11 December Days Rd • Holmes Rd • Sydenham Rd/Bay Vw • Casterbridge Cl • Higher Days Rd • Shaston Cl • Shottsford Cl • Kingswood Cl • Alderbury Cl • Anvil Cl • Leeson Cl • Benlease Wy • High St

Thursday 12 December Bell St • High St • Steer Rd • Hillsea Rd • West Dr • South Rd • Newton Rise • Newton Grange Cl • Cow Lane

Friday 13 December Dolphin Ct • Cauldron Barn Rd • Cauldron Meadows • Cauldron Barn Pk • D'Urberville Dr • Anglebury Ave • Northbrook Rd • Greensands Wy • Brickyard Cl • Old Grammar School Rd • Wessex Wy

Saturday 14 December Swanage Co-op, 10 am-4 pm

Monday 16 December Burlington Rd • Victoria Rd • Ulwell Rd • Seaward Rd • De Moulham Rd • Bonfields Ave • Northbrook Rd • Cauldron Barn Rd • Cauldron Cr • Battlemead • Cauldon Ave • Beach Gardens • Gannetts Pk • Vivian Pk

LANGTON MATRAVERS

Tuesday 10 December Capston Fld • High St • Tom's Fld Rd • Old Malthouse Ln • Durnford Dr • Gypshayes • The Hyde • Steppes • Lower Steppes • Nine Barrow Vw • Steppes Hill • Serrells Md • Three Acre Ln

CORFE CASTLE

Saturday 21 December Crazy4Corfe

Updates from the National Trust



Have a wild Christmas!

Firstly, we wanted to wish you a really wild Christmas and nature-rich New Year! We hope you enjoy your festive feasts as much as this robin enjoyed its tasty worm!

Remember to follow us on our Facebook page – National Trust Purbeck Countryside – if you want to know more about the wonderful wildlife and landscapes of this area.

Photo: Robin and worm, Chris Cowell



Recreating our ancient wood pastures

Did you know that wood pasture is one of the most biodiverse habitats in the country? Made up of a mosaic of grassland, scrub and trees, each habitat supports different species. We've begun a project to create 380ha (940 acres) of wood pasture across our land in Purbeck. The first stage is rotavating small plots of land to create bare ground where seeds and saplings can grow. This might look drastic, but new growth will soon take hold. We are experimenting with different ways to protect saplings from deer or grazing animals. This includes using brambles or cut branches to protect the plots (deer don't like putting their faces into dense vegetation) or erecting fencing.

Beavers settle in

Since their arrival in January, the two beavers at Little Sea have built a lodge and had a baby (kit)! We have erected signage around the lake to protect both the wildlife and dogs. The main messages are:

- Please keep your dog on a lead and don't let it swim in the water. Beavers aren't naturally aggressive but will defend themselves if they feel threatened.
- Little Sea provides a home to lots of vulnerable wildlife, not just beavers, so no swimming or watercraft are permitted.
- You're most likely to see a beaver if you are quiet by the waterside. They have good hearing and will hide if scared.
- If you see a beaver, watch from a distance, preferably using binoculars.

There is still no news yet on our application to gain a government licence to release more beavers at Little Sea. [Find out more about beavers here.](#)

Purbeck youngsters go wild!

Youngsters across Purbeck are being given the chance to immerse themselves in the natural world, thanks to the passion of local people. 'Purbeck Goes Wild', led by Planet Purbeck and the National Trust, involves some 20 organisations and Purbeck's 10 schools. It offers nature-based school visits and family activities, together with career pathways into the sector for young people. Find out more on the [Planet Purbeck website](#). If you could help as a volunteer, please email Jill.Bailey@nationaltrust.org.uk.

Challenging conservation works

The second phase of a three-year programme of conservation work is underway at Corfe Castle. The works will address issues caused by vegetation and weathering, as well as rapid deterioration due to climate change. The mixed weather has dried and weakened the mortar joints, with heavy rain causing further destruction. The areas of work include conserving decorative and historical elements; resetting loose or fallen stones; stonework conservation, and soft capping. Specialist contractors abseil down the castle structures and carry out the works while suspended. [Find out more here.](#)

Cathy Lewis, National Trust



Photo: Children on nature trail, Cathy Lewis



Photo: Beaver, Pam Ballam

THE MOWLEM

Theatre, Cinema & Function Rooms

What's On in December 2024

www.themowlem.com

On The Stage:

Budapest Cafe Orchestra

Evoking vivid images of Tzigane fiddle maestros, Budapest café life and gypsy campfires, The Budapest Cafe Orchestra play a blistering barrage of traditional folk and gypsy-flavoured music from across the Balkans and Russia, from Klezmer laments, Romanian Doina and Hungarian Czadas, plus their own unique re-imaginings of some of the biggest tunes ever written by the classical greats. Featuring Eddie Hession (accordion), Adrian Zolotuhin (domra/balalaika/guitar/saz) and Kelly Cantlon (double bass), The Budapest Café Orchestra was established in 2009 by British composer and violinist Christian Garrick and, led by him, the group have won legions of fans with the profound musicianship on show and their magical and infectious performances.

Thursday 12th December - 7:30 PM

The Big Christmas Assembly - Limited Availability!

Crack out the Christmas Jingles! Join James B Partridge (Primary School Assembly Bangers LIVE) for an evening of pure nostalgia, stepping back in time for some joyous singalong tunes from Christmases past. You won't have to sit cross-legged by the tree waiting for Santa, but you will be encouraged to sing along! Full of festive musical surprises, throwback mashups and reflections on growing up at Christmas time. James is a singing teacher and regularly performs across the UK and Europe. He has been featured on BBC Breakfast, Loose Women (ITV) and Vanessa Feltz show (TalkTV). He recently featured live on Jeremy Vine's BBC Radio 2 show and BBC South East Today. His online videos have been written about in The Independent, Buzzfeed and featured in a number of podcasts. Radio appearances include: BBC Radio 2 with Scott Mills, BBC Radio Kent, BBC 5 Live, BBC Radio Nottingham, BBC Radio Leicester, BBC Radio Lancashire, Absolute Radio and JackFM.

Saturday 14th December - 7:30 PM

After show Christmas party with The Flying 'G' till late in The Showbar!

In The Studio:

The Father Christmas Experience

The Mowlem are proud to present the very first Father Christmas Experience! Much more than a usual grotto, the Studio will be transformed by a creative team and professional actors for a wonderful seaside-themed adventure to meet Father Christmas. Entry is by timed ticket only and all children receive a special present. The Experience is expected to be very busy so book early. Don't miss this unforgettable Christmas treat!

Saturday 14th December - 11:00 AM - 5:30 PM (book a timed slot)

Salamanda Swing Band Christmas Celebration

Join Salamanda Swing Band for their annual Christmas Celebration! Get tickets from Sues Card's Swanage or on the door.

Tuesday 17th December - 7:30 PM - Doors open at 7:00 PM

Don't forget to follow us on Facebook, Instagram and Twitter and check our website for the latest update on our programme, timings and bookings.

On The Big Screen:

Blitz (PG)

In World War II London, nine-year-old George is evacuated to the countryside by his mother, Rita, to escape the bombings. Defiant and determined to return to his family, George embarks on a journey back home as Rita searches for him.

Saturday 30th November - 5th December 7:30 PM (Excluding Sunday 1st) Monday Matinee 2nd December - 2:30 PM

Gladiator II (12A)

Years after witnessing the death of Maximus at the hands of his uncle, Lucius must enter the Colosseum after the powerful emperors of Rome conquer his home. With rage in his heart and the future of the empire at stake, he looks to the past to find the strength and honor needed to return the glory of Rome to its people. Starring Paul Mescal, Denzel Washington Pedro Pascal. Directed by Ridley Scott.

Monday 9th December - Wednesday 11th - 7:30 PM Monday Matinee 9th December - 2:30 PM

Small Things Like These (12A)

In 1985, Bill Furlong, a devoted father, uncovers disturbing secrets at the local convent; as he investigates, he discovers shocking truths about his own past and life. Starring Cillian Murphy, Emily Watson, Clare Duane. Directed by Tim Mielants.

Friday 13th December - Thursday 19th - 7:30 PM (Excluding 14th & 15th)

Monday Matinee 16th December - 2:30 PM

Paddington in Peru (U)

Paddington and his adopted family, the Browns, decide to visit his aunt Lucy in Peru, but circumstances lead them towards misadventures in the Amazon rainforest and mountains of Peru. Starring Emily Mortimer, Ben Whishaw, Antonio Banderas. Directed by Dougal Wilson.

7:00 PM Screenings on - 20th, 21st, 22nd, 23rd, 28th, 29th, 30th & 2nd January. 11:30 PM Screenings on - 21st, 22nd, 23rd, 28th & 31st.

Christmas Eve screening - 10:00 AM - 24th December.

Christmas Event:

The Elf Trail:

Pop in during bar opening hours with your little ones to help Jonny the elf find a lost message from Father Christmas! Ask our friends at the box office or bar for what you will need, follow the trail to find the secret message, and get a festive treat!

Bar opening 5:30 - 9:30 Mon-Sat | 45 minutes before any live event or film screening. More opening times TBC

1st - 24th December FREE EVENT

In The Showbar:

Oscar's Christmas Quiz

Our monthly quiz, but Christmas-themed!

Wednesday 18th December - Doors open at 5:30 PM, Quiz starts at 8:00 PM



In 2025 Swanage Community Defib Partnership will be celebrating a 10 year Anniversary. So much has been achieved in that time thanks to a wonderfully supportive community and the work of a committed and dedicated volunteer team of both steering group members and defib guardians. From our initial aim in 2015 of placing 4 public access defibs we now support 46 devices and a trauma cabinet, situated across Swanage and the local villages - will it be 50 defibs and more trauma cabinets by the end of '25?

Our aim continues to be one of development so an increase in number is possible but sustainability of the service is a high priority therefore maintaining and monitoring all the SCDP estate remains a key focus. We are very grateful to the Swanage Carnival Committee for naming SCDP as an annual beneficiary of carnival funds and to Swanage Town Council who have provided a defib maintenance grant and funds to support the development of more trauma cabinets. We are always pleased to receive donations as some of the kit is now in need of replacement.

We are delighted to welcome Dr Claire Nadaf to our steering group. Claire brings a wealth of nursing experience to our team; she is a local and is currently the Head of Academic Enterprise and Engagement at the Health Sciences University in Bournemouth. Welcome Claire, its good to have you with us.

SCDP was proud to be included in the Remembrance Sunday service and grateful to Tim Mersey a longtime defib guardian for laying a poppy wreath at the war memorial. He was accompanied by his wife Deirdre, also a guardian, and Mary Buck BEM, a member of the SCDP steering group - thank you all.

We send our seasonal greetings to all and thank you for your ongoing support of this important local service.

Maggie Hardy, SCDP



Citizens Advice in East Dorset and Purbeck offers advice if people are concerned about debt during the festive season:

My children love Christmas and they're already picking extra treats off the shelf when we go shopping, and telling me what presents they want. I really want to make it a special time for them, but times are tough and I can't help worrying about overspending and getting into debt. What can I do to manage my finances during the holiday season, and where can I turn if I find myself struggling?



The festive season can be a financially challenging time, and often borrowing money or using a credit card to fund Christmas can seem like your only option. But there are steps you can take to keep your spending under control and avoid falling into debt. The first thing to do is make a budget and stick to it.

Consider who you're buying gifts for, what other seasonal expenses you have, and how much you can realistically afford to spend. Always keep receipts, or ask for gift receipts, in case you overspend and need to return something. And remember that household bills may be higher during this period due to colder weather and spending more time indoors.

If you've built up debt, please don't ignore bills or letters. Speak to the organisation you owe money to, as they may let you pay smaller amounts.

Pay 'priority debts' first, like rent, mortgage arrears, council tax, and energy bills. For other types of debt like credit cards or loans, gather all the information on what you owe, create a budget, and contact your creditors to set up an affordable repayment plan. This might seem scary, but it's an important first step.

If your budget just doesn't add up and you need help to afford essentials like bills and food, see what cost of living support is available on the Citizens Advice website.

Check if you're eligible for the Winter Fuel Payment

It's especially important to check if you're eligible for the Winter Fuel Payment, which will now only be paid to those who

continued on next page ...

... continued from previous page

receive Pension Credit or other means-tested benefits. If you make a claim for Pension Credit by 21st December, you might still receive the Winter Fuel Payment.

If you do find yourself struggling financially during or after the holidays, don't panic. Support is out there, and Citizens Advice can help you understand what's available. We're here to help you find a way forward.

Free Energy Advice at Swanage Market

On Friday 29th November, the Dorset Energy Advice Bus will be at Swanage Market from 9.30am-12.30pm, with the general Advice Bus, where they will be handing out free winter warmer giveaways. This is part of #FuelPovertyAwarenessDay which highlights the plight of many households across the UK who are struggling with energy costs and helps raise awareness of available support.

The Dorset Energy Team provide free energy advice to households across Dorset, including energy efficiency advice, resolving billing issues and meter problems. They can also help with supplier questions and prepayment meters, carbon monoxide awareness and provide free CO monitors. All advice is free and confidential. The Dorset Energy Bus timetable can be viewed online here www.edpcitizensadvice.org.uk/energy

To speak to an energy adviser, call the Energy Line on 01929 775500, leave a message and someone will return your call. Or email: energy@edpcitizensadvice.org.uk or visit our website for more information: www.edpcitizensadvice.org.uk/energy

Drop-ins

Swanage Library Drop-in

Citizens Advice is at Swanage Library on a Tuesday, 10am-12pm. No appointment is needed, just come along and have a chat with our friendly advisers. All of our drop-ins and outreaches can be found on our website here www.edpcitizensadvice.org.uk/get-advice/in-person

Advice Bus

The Advice Bus stops weekly at Swanage Market on a Friday morning, 9.30am-12.30pm and at Corfe Castle at the Residents Car Park, West Street, the third Friday of the month. Next on the 20th December, 17th January, the 21st February and the 21st March, 1pm-3pm.

Advisers can offer advice on a number of different issues including: benefits, debt & money, employment, energy, family, housing and legal. If you're struggling to pay your Wessex Water bills and if you're on pension credit you may be entitled to additional help. Advice is free and confidential and you don't need to book an appointment.

Visit our website for our bus stop locations www.edpcitizensadvice.org.uk/get-advice/advice-bus

For more information about Citizens Advice services, including all of our outreaches, visit www.edpcitizensadvice.org.uk to speak to an Adviser, call the Dorset Adviceline freephone on 0800 144 8848, 10am-4pm weekdays.

Friends of Swanage Hospital Update

The Friends of Swanage Hospital AGM held on Wednesday 25th September was well attended and our main Speaker, Matthew Bryant, CEO Dorset County Hospital and Dorset Healthcare gave a useful update and reassurance that community hospitals were very much at the forefront of healthcare planning. There was also the opportunity for the audience to raise a number of questions and concerns.

Thank you to everyone who donated goods, helped with or attended the Friends of Swanage Hospital Autumn Fayre. The running of the event is a team effort and we are very grateful to those from other local community groups, current and retired staff and other individuals who all pitched in to help the committee set up, run the event and clear up afterwards.

Thanks to everyone's support, we raised a fabulous £2,176.50. This will all be used towards ensuring that our hospital is able to continue to provide the best and most comprehensive services to our local community with the most up-to-date equipment. The support of our Friends and the local community is absolutely essential, so thank you for all of those who were able to help us to make it such a happy and worthwhile event.

You may have noticed the pull-up banner in the reception area of the hospital which lists all the current services and clinics which are available at Swanage Hospital. In conjunction with Swanage Patient Participation Group, we are pleased to report that Swanage Medical Practice have also agreed for us to have a pull-up banner there.



FRIENDS OF SWANAGE HOSPITAL
<https://www.friendsofswanagehospital.org.uk/>

continued on next page ...

... continued from previous page

We are aware that people are still struggling to get referred to Swanage Hospital if they ring 111 and it would be appropriate for them to be treated there. Our Chair, Deirdre Selwyn and Dr Margaret Guy of Healthwatch Dorset have recently taken part in a meeting arranged by DHUFT (Dorset HealthCare University NHS Foundation Trust) to identify and address issues with the current system.

We are actively engaging with various parties and groups to try and bring more services to Swanage Hospital and also to repurpose the former Endoscopy Suite. Dorset Healthcare are supportive of both these projects, but NHS procedures and protocol need to be followed and progress at the moment is slow. We are, however, hopeful that good progress will be made in 2025 and we are heartened by the fact that the community hospitals in Purbeck very much form part of the plan going forward and as well as helping to ease pressure on the acute hospitals, Swanage and Wareham Hospital are envisaged as helping to ensure that there are vibrant local services in the community.

Over 300 injections were given at the **Walk In Flu and Covid Vaccination Clinic** held at Swanage Hospital on 6th November. Another one is planned for **Wednesday 4th December from 10am to 4pm**. If you are eligible, you can have either or both vaccinations.

With all good wishes for a Happy and Healthy 2025.

DEMENTIA FRIENDLY PURBECK

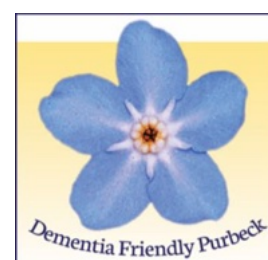
Happy Christmas everyone!

We continue to make good progress towards our target to raise £120k to employ a second Admiral (Dementia Care) Nurse for Purbeck and would like to thank everyone who has contributed to date. This includes the Conservative Club who organised a quiz, the Swanage Drama Company and the Swanage Literary Festival who made donations from funds raised at their recent events at The Mowlem.

Until the 29th November we have a 'pop up' charity shop in Station Road (between Greggs and Studio South). You won't miss it because the lovely people at Studio South did a fantastic job of painting the window! Drop in and pick up a bargain! The shop will be open from 10.00am until 4pm.

You can also come and see us at the Swanage Christmas Market, Saturday 7th December 10.00am until 4pm

There will also be an Evening of Christmas Sparkle with Karen 'G' at historic Newton Manor Hall on Friday 20th December at 7pm. Guests will include Simon Wells, Claire Leman, Jonathon Searle, Aaron Hughes and there may be few surprises. Tickets are from Alan May on 07827892 893: 170 High Street Swanage, entrance virtually opposite Cow Lane



Swanage & Purbeck
Development Trust
Charity Reg. No. 1162662



Swanage Medical Practice Patient Participation Group

Swanage Medical Practice PPG works with the Practice Manager and the GPs at the Swanage Medical Practice to help improve and shape local health services. The PPG is made up of patients registered with the Practice who have volunteered to get involved. We meet every two months - and we are always looking for new members!



We last met on 17 September, when Ellie Suthers from Lewis-Manning Hospice Care joined us to talk about the services offered in Swanage by Lewis-Manning Hospice Care. Our next meeting will be held on 19 November 2024, when we will be joined by Danielle Jackson-Orchard, who is Purbeck Primary Care Network's Social Prescribing Lead.

We are currently working with the Practice to promote awareness of

- Sources of information, advice and support on health issues, including services people can refer themselves to without needing to see a GP first - the newsletter [Making the best use of all local health services](#) has now been published on the Practice's website
- Services provided at Swanage Hospital - look out for the messages on the screens in the Waiting Room at the Surgery and the pull-up Banner about services provided at Swanage Hospital, which has been produced by the Friends of Swanage Hospital.

We are also in the process of reviewing the design and content of every page on the Practice Website.

You can find more information about the PPG and what we do, including Minutes of our meetings, at: www.swanagemedical.org.uk/pages/Patient-Participation-Group.

If you are interested in joining the PPG, please contact Natasha Ritchie, the Practice Manager, or email the PPG directly at ppgswanage@gmail.com.

COVID-19 Vaccination

The Autumn/Winter 2024 COVID-19 Vaccination Programme will be running right through to **Friday 20 December**. More information about the COVID-19 Vaccination Service provided in Dorset can be found on [Dorset HealthCare's website](#) and on the [Stay Well Dorset website](#).

You can book your COVID-19 Vaccination via the NHS App, or by visiting the [National Booking Service website](#), or by **calling 119 free of charge**. Vaccinations can be booked at a number of local community pharmacies, as well as at Wareham Hospital.

Dorset HealthCare is also holding [Walk In Clinics](#) at locations across Dorset, Including at Swanage Hospital and Wareham Hospital.

Please note that Swanage Medical Practice is NOT involved in the COVID-19 Vaccination Programme. All enquiries and bookings must be made via the [National Booking Service](#).

Pension Credit Campaign - Can you Help?

You may already know that Dorset Council is running a campaign to encourage people of State Pension age in Dorset to check whether they are eligible for Pension Credit - and to apply for it if they are. This will also allow them to claim the Winter Fuel Payment.

It is believed that there are around **5000 people in Dorset** who are likely to be eligible to claim, but who currently don't. The PPG has been asked to help spread the word to encourage all those eligible to take up this offer of support and to register for Pension Credit as soon as possible. Can you also help spread the word?

[People can register for Pension Credit on the Government website here](#)

The last day to apply for Pension Credit AND to be eligible for the 2024/25 Winter Fuel Payment is **Saturday 21 December 2024** - so time is running out.

Get free help and advice to keep your home warm

Living in a cold home can be bad for your health and make many health conditions worse. Damp and mould in your home can contribute to respiratory problems, infections, allergies, or asthma.

Healthy Homes Dorset can give you free advice on how to deal with these problems and how you can make your home more energy efficient. You might also be [eligible for free loft and cavity insulation](#).

Last year, Healthy Homes Dorset gave advice over the phone to over 3000 residents across Dorset - and they can help you too. **Call freephone 0300 003 7023** for more information.

*Mrs Margaret Broadhurst (Dr Margaret Guy)
Chair, Swanage Medical Practice PPG*

Purbeck Association of the National Trust (PANT)



Who we are

We are a local social group supporting the work of the National Trust, by organising talks, outings, social events and holidays. You don't have to be a member of the National Trust to join us.

What we're doing

As a group we've learned that it's best to avoid organising activities in December. Most of our members are too busy with everything else that's going on.

We start up again in January, when members will be Kurling in Furzebrook Village Hall on the 15th. That's not a typo – Kurling is like Curling, but it's played with heavy rubber 'stones' that run on ball bearings, so it can be played on any flat surface.

We have a talk, open to everyone, by Amy Brennan, proprietor of *Heirlooms* in Wareham. Amy will tell us about her journey from being an agricultural auctioneer to being an established jeweller specialising in antiques. It's an interesting, unusual and amusing story. Amy will bring along various items of jewellery from different countries and centuries and talk about changing fashions and styles. The talk will be at 2.30pm in Carey Hall on Thursday 16th January. Entry is £4 (£3 for PANT members).

February brings a talk in Swanage about Studland in World War II, and a coach trip to Southampton. More about that in the next issue of this SPDT Newsletter

Find out more

You can find out more about us, including details of our forthcoming activities, and of how to join us, by going to our website www.purbecknt.org.uk, or you can email us at info@purbecknt.org.uk, or call 01929 552872.

A wonderful team spirit ensures Purbeck's industrial heritage is not forgotten

Although it is now closed to visitors for the winter, the Purbeck Mining Museum remains a hive of activity as its team of dedicated volunteers get to work on a myriad of maintenance and restoration projects in preparation for reopening next spring.



Hilary Corton, one of the many volunteers at the Purbeck Mining Museum, helps to pack away some of the more delicate artefacts for safe winter storage.

Delicate artefacts have now been packed away and the museum displays are being cleaned, protected and freshened up. Various repair and repainting jobs are underway in the main building and the annual overhaul of the locomotives, rolling stock and narrow gauge track bed around the main building has begun in earnest. New fencing is also being installed around the site to maintain safety for the museum's growing number of visitors. And work is continuing on scrub clearance and trimming of hedges and undergrowth around the museum and along some of the new footpaths through the adjacent woodland.

"The museum owes its very existence and its continuing success to a wonderful team of male and female volunteers," says Peter Sills, the museum's Chairman. "Everyone has different skills and interests to bring to the 'party', but there really is a wonderful team spirit and a great sense of collective pride as we help to shine the spotlight on such an important part of Purbeck heritage.

"We're always on the lookout for new volunteers to join our Friday work parties throughout the year and to help run the museum when it is open to visitors. Anyone with an interest in the history of this beautiful corner of Dorset, who likes meeting people or who has skills ranging from electrical and mechanical engineering to carpentry, gardening and decorating will be given a very warm welcome by a team of enthusiastic, friendly and like-minded people."

continued on next page ...

... continued from previous page

The museum also benefits from the regular support of Swanage Railway's youth group, The Sygnets, on projects ranging from site clearance to construction of bird boxes. And representatives from other organisations frequently come along to provide some extra hands on some of the more labour-intensive jobs. Volunteers from Allianz Insurance, for example, recently worked alongside the Museum's team in helping to replace fence and gate posts around the main entrance to the site.

To find out more about joining the team of volunteers at the Purbeck Mining Museum just visit

<http://purbeckminingmuseum.org/contact-us>

Volunteers from Allianz Insurance recently helped to replace fence and gate posts around the main entrance to the Purbeck Mining Museum.



At a recent meeting of the Action for Health and Care in Purbeck (AFHCP) initiated by the Friends of Wareham Hospital and which brings together representatives from Purbeck-wide organisations we were pleased to welcome the recently appointed MP for South Dorset, Lloyd Hatton who told us of his thoughts for health and care provision in our area. Whilst his responsibilities do not include Wareham Hospital which is covered by the Mid Dorset MP Vicki Slade, Lloyd did listen to all our concerns, did appear to appreciate that services are Purbeck wide and are closely linked and was keen to receive more information about the many services provided at Wareham Hospital and available to his constituents.



We are now aware that NHS Dorset will be leading 'Neighbourhood Planning' work in Purbeck - the established relationships already in place through our group will provide a great foundation for this work and we would like to encourage members of the local community to get involved.

Our Wareham Hospital garden work continues and Chris North and I were delighted and honoured to represent our small team at RHS Wisley in September when we were awarded a level 4 - 'Thriving' certificate representing the work we have done and are doing to improve the garden area as part of the Britain in Bloom 'it's your neighbourhood scheme'. A memorable day for us.

We are holding a Christmas raffle to continue our fundraising efforts to support the Friends work within the hospital and wider community. Please do support us. Tickets are available at Reception for £1 each and will be available until 13th December.

Wishing everyone a Happy Christmas Time and we all hope for a more peaceful New Year.

Maggie Hardy, Friends Chair

Sue Dean, Chair of Wareham presenting the certificate we received at RHS Wisley to Maggie Hardy. Photo by Rod Curtis

Homes for Ukraine

Dorset #StandWithUkraine

New hosts are urgently needed across Dorset to provide safe homes for Ukrainian Refugees who have been forced to flee their war-torn country.

Could you offer a home to Ukrainian refugees in Dorset?

Would you be able to host a Ukrainian individual, couple or family? Do you have a spare room in your home or annexe or a vacant property?

Dorset has offered sanctuary to over 1,000 Ukrainians since the launch of the Homes for Ukraine Scheme in March 2022.

As the war sadly continues, more Ukrainians need a place of safety, and we are particularly seeking new hosts who have property in or near to towns. Help is needed both for Ukrainians escaping war zones and those already in Dorset who need to move on from their initial hosting arrangement.

Hosting refugees can be an immensely rewarding experience and many of our hosts have offered accommodation to additional families once their original guests have moved on.

Quotes from current hosts

"They bring me immense joy every day"

"Hosting is a venture worth embarking on – understand the implications, have courage and the rewards will be with you, and your guests, for life"

"Playing a small part in taking action to show support for Ukraine in opposing criminal Russian aggression."

Support is available to you

Dorset Council has a dedicated team who can provide you with ongoing advice and signpost you to a large network of community support groups. If you would like to talk to us about becoming a host, please get in touch.

Ukraine Response Team

Email: ukraineresponse@dorsetcouncil.gov.uk

Call: 01305 221000

Or visit our website:

dorsetcouncil.gov.uk/your-community/refugee-services



SWANAGE MUSEUM

**Father Christmas
The Myth And Mystery
A Talk by Derek Monk
Friday 22nd November 2024**



YOU ARE ALL WELCOME
St Edwards Catholic Church Hall, Rempstone Road
7.30pm
Doors Open 7.00pm, Light Refreshments
Museum Members £3.00 - Non-members £4.00



WAREHAM LIONS CLUB SWIM FOR CHARITY 2024

Reg Charity No 1177953

SATURDAY 12th and SUNDAY 13th OCTOBER 2024

At the PURBECK SPORTS CENTRE

The Swim is open to all clubs, business houses, schools, associations, youth Organisations, family groups etc, there is no limit to the number of teams entered by any organisation. Each team participating may consist of up to TEN swimmers with an adult NON swimming team captain. Each team will be responsible for their own sponsorship. Each team will receive 75% of their sponsorship with 25% going to the lions. Wareham Lions Club will organise, supply necessary forms, and run the event on the Saturday and Sunday.

For further information contact.

John Goodwin – phone: 01929 556710

Email: john.goodwin17@btinternet.com

**Barn Dance at
FURZEBROOK VILLAGE HALL**

SATURDAY 30TH NOVEMBER, DOORS OPEN 7PM
-Joint fundraiser between Wareham Rotary and Lions for Not Just Sundaes-

Ticket price: £15.00
Posh Ploughman's included. Licenced Bar. Dancing to 'Arish Mel'!

**Tickets from A F Joy or contact
Ann: 07870 775119 or Richard: 07771 647400**

LANGTON MATRAVERS PARISH COUNCIL

Dorset Police: In November, Chris a Dorset Police Community Support Officers from the Local Neighbourhood Team attended an event organised by the Parish Council. During the session, residents voiced a range of concerns, which Chris listen to and where possible gave advice. The key message from the evening was the importance of reporting crimes and suspicious activities. "REPORT, REPORT, REPORT."

Reporting Crime and Potential Crime Anonymously: Have you ever worried about giving information to the police? Did you know report anonymously?

If you suspect something that could help prevent a crime REPORT IT.

If you have witnessed a crime REPORT IT.

If you overhear something suspicious or become aware of important details REPORT IT.

Reporting saves lives. Do not hesitate. Your information could make the difference.

Crimestoppers 0800 555 111

Bournemouth-Swanage Motor Road Ferry Company Toll Review Application: The inquiry date has postponed to January 21st 2025, with the venue to be confirmed.

New Play Park Slide. A concerned resident recently alerted the Parish Council to an issue with the play park slide. Following discussions with the manufacturer, it was agreed that the slide would be replaced. The new slide is expected to be installed before the end of the year. The Parish Council extends its thanks to the resident for raising this matter.

Planning: The following application was received and discussed:

Application No. P/CLP/2024/01505, Location: 1 Spyway Mews, Durnford Drove, Langton Matravers, **Description:** The construction of a small, single storey garden room. Full dimensions for size of building W3.8m D 2.8M H 2.5m Appeal Reference APP/D1265/X/24/X3348051 **RESOLVED:** Langton Matravers Parish Council agreed not to comment

Full details for all planning applications can be found on the Dorset Council website, <https://www.dorsetcouncil.gov.uk/planning-buildings-land/planning>

Energy worries: With colder nights approaching, many residents may be worried about heating costs. If you are concerned about energy costs, please contact Citizens Advice, which offers free advice services to those in need. The Citizens Advice can be contacted via the following:

- Corfe Castle: Citizens Advice Bus available every third Friday of the month in West Street by the doctors surgery.
- Swanage Library: Available every Tuesday from 10:00 AM to 12:00 PM.

Dorset & Wiltshire Fire and Rescue – Safe and Well Visit

A Safe & Well visit is a completely free service offered by Dorset & Wiltshire Fire and Rescue Service to help keep communities safe in their homes.

The Safe and Well provision is a good will advisory service to members of the public that meet eligibility criteria. During a visit the Fire Service carry out a room by room check to provide you with appropriate advice and support to keep your household safer from the risk of fire. The Fire Service might also make recommendations, such as kitchen safety tips, how to improve the use of electrical items etc. Following the visit we may signpost you to other agencies or services to help you access the appropriate support that might be required.

Your safety is important, so to help the fire service before they visit your home, they will telephone you to discuss any concerns you may have and arrange to visit you at a convenient time. If the fire service identify that you need detection during the visit, we can install our standard smoke, heat or carbon monoxide detectors where appropriate.

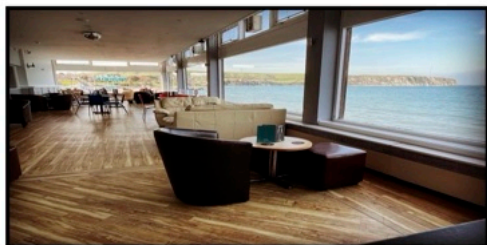
To see if you are eligible for a Safe and Well Visit, visit <https://www.dwfire.org.uk/safe-and-well-visits/safe-and-well-referrals/> and complete a referral form or alternatively, call 0800 038 2323 and speak to a member of the Prevention Administration Team. If you do not qualify for a Safe and Well Visit, you will be sent safety information via email or letter.

Council Meeting: The next Parish Council meeting will be held on 12th December 2024 in the Langton Matravers Village Hall. During the meeting there is a public session, so please come and join us to have your say.

Parish Council Contact Details: Due to GDPR any communication addressed to the Clerk, will not automatically be sent to Councillors. If you are happy for your personal details to be shared with Councillors please give permission for your details to be shared. Clerk: Michelle Harrington, **Email:** clerk@langtonmatravers-pc.gov.uk, **Telephone:** 01929 425100, **Write:** 1A High Street, Langton Matravers Dorset BH19 3HA, **Website:** www.langtonmatravers-pc.org



Making Memories
Dementia Friendly Café
meeting at the *Show Bar*
Mowlem Theatre, Swanage



from 10 am to 12 noon

on the 1st and 3rd Tuesday in the month
 Meeting friends socially over a cup of tea or coffee and
 homemade cake with occasional entertainment
 a stimulating way to share memories and
 experiences with other people and their carers

Dates for your Diary

September 3rd & 17th
 October 1st & 15th
 November 5th & 19th
 December 3rd & 17th



Swanage Warm Welcomes

Monday *Pop-In Café* Emmanuel Baptist Church
10.30am - 1pm hot drinks, games and light lunch



Citizens' Advice Community Café, Herston Hall
10am-12pm coffee, cakes, advice, fair share pantry

Swanage Library Cuppa and Company 10.30am - 12.30pm

Tuesday *The Link Methodist Church* 10am - 12noon

Wednesday *T-Pot Rectory Classroom*
St Mary's Church 10am - 12.30pm tea and tasty cakes



The Loft 17a Commercial Rd Community space
12.30pm - 3.00pm chat and vegetarian meal



Thursday *Coffee Pot* All Saints Church Ulwell
10am - 3.00pm coffee and cake light lunch at 12.30pm

The Link Methodist Church 10am - 12noon 103 High Street

Friday *Coffee112* Swanage URC High Street
9.30am - 12noon bacon butties, tea and cakes



Come and join us very soon!



Singing for Pleasure
Every Thursday
2pm until 3.30pm



at Emmanuel
 Baptist Church

Swanage Dementia Friendly
 £2 per session which includes
 a drink and biscuit



All Welcome



Pop-In



Every Monday at Emmanuel
10.30am until 1.00pm

Especially for people who
live on their own

including

hot drinks, games, jigsaws, crafty
colouring, chat, donations only



and finishing
with a light lunch



CORFE CASTLE PARISH COUNCIL

The Parish Council Opposes Sale of formerly Rented Houses: Corfe Castle Parish Council has resolved to oppose the sale of vacant, formerly rented homes, citing concerns over the impact on the local community. The Parish Council has instructed its clerk to write to the organisations responsible for these sales, expressing its belief that insufficient attention has been paid to the broader community consequences of losing these rental properties. The Parish Council will urge the sellers to reconsider their approach and prioritise the needs of the local community over open-market transactions.

Bournemouth-Swanage Motor Road and Ferry Company: The public inquiry into the Bournemouth-Swanage Motor Road and Ferry Company's application to raise fares has been rescheduled. Originally set for an earlier date, the inquiry will now commence on January 21st 2025. The venue for the rescheduled hearing has yet to be confirmed.

Noticeboards: The Parish Council is delighted to announce the arrival of three brand-new noticeboards, which some of you may have already observed. Crafted from solid English Oak, these beautiful additions were meticulously handcrafted by several volunteers from the Wareham Area Men's Shed.

Budget 2025-26: The Council reviewed its expenditure needs for 25-26 but will delay a decision to either the December or January meeting on the final precept as information is needed from Dorset Council on the number of Council taxpayers in the Parish following the legislation on second homes Council tax.

Planning application update: Full details for all planning applications can be found on the Dorset Council website, <https://www.dorsetcouncil.gov.uk/planning-buildings-land/planning>. The following applications have been received by Corfe Castle Parish Council:

Application No: P/HOU/2024/05971. **Location:** 40 West Street Corfe Castle BH20 5HD. **Proposal:** Erect single storey rear extension, 1.5 storey rear extension with roof terrace, replacement roof to rear wing and internal remodelling.

Comment: No objection. This is very similar to lapsed plans which were originally submitted and passed in 2017. A couple of small amendments are the replacement of a first-floor dormer which now becomes a velux window (following concerns about overlooking) and the creation of a first-floor balcony by recessing the first floor of the proposed 2 storey extension.

Application No: P/TRC/2024/06409. **Location:** Located within the turning area and access for open space to Corfe Castle Playing Field at the rear of 21 West Street and rear of 1 Springwell Close. **Proposal:** T1 Common Lime (*Tilia X europaea*): Recommend a 4m crown raise to allow more room within the turning area for maintenance vehicles for the park. G1 Sumacs (*Rhus Typhina*): Recommend fell all group of Sumacs, as they have outgrown their situation, are uprooting from the wind, and are blocking access to the equine field. The gate to the field will need replacing soon and the Sumacs will hinder this maintenance.

Comment: No objection.

Next Council Meeting. The next meeting is scheduled for Monday 9th December 2024, at 7pm in the Corfe Castle Village Hall, Bill Carter Room. To start the meeting is a public half hour, so please come and join us and have your say.

As the year draws to a close, the Parish Council would like to take this opportunity to wish all residents a very Merry Christmas and a happy, healthy New Year!

Parish Council contact details:

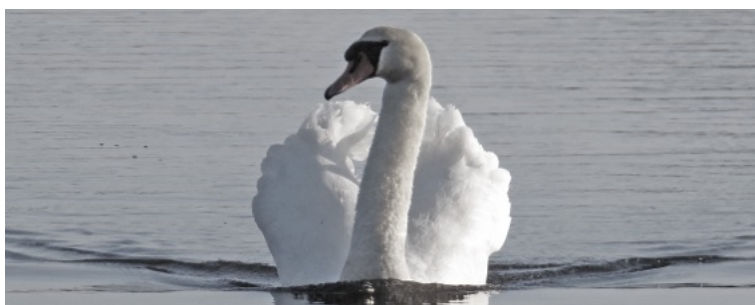
Clerk: Michelle Harrington, **Telephone:** 01202 670105,

Email: clerk@corfecastleparishcouncil.gov.uk,

Write: 34 Egmont Road, Poole Dorset BH16 5BZ,

Facebook: www.facebook.com/CorfeCastlePC,

Website: www.corfecastleparishcouncil.gov.uk



DEADLINE

for contributions to the February/March 2025
issue of the Newsletter

FRIDAY 17 JANUARY 2025

Photograph by Gwenda Yeomans