

SWANAGE AREA FORUM

INCLUDING SURROUNDING VILLAGES

NEWSLETTER

FEBRUARY 2021 - No. 9



Nearly a year has passed since the start of the 'Covid-19' crisis erupted in the UK. Locally there have been many downs, loss of lives particularly in care homes, loss of jobs, including at The National Trust, The Allnatt Centre, Harrow House, The Swanage Railway, various hospitality and retail locations - and many others. There have, thankfully been some 'ups' including a brisk and efficient vaccination programme at the Wareham hub and a long, busy and beautiful summer. That's a lot for all of us to contend with over the last year, but the resilience in the Purbeck community has shone throughout magnificently.

The Swanage and Purbeck Development Trust and The Swanage Area Forum decided last March to produce an emergency newsletter in order to draw the Purbeck communities together and try to help keep as many folk as possible in our area informed of developments and news. We originally thought that we would probably produce a sixteen page newsletter, but the response from so many different organisations in Purbeck has been amazing and as you can see we are this month providing a 41 page issue.

We would like to draw your particular attention this month to some very important items regarding the future of our communities. **The Dorset Local Plan Public Consultation** (8 Pages), the new '**Wellbeing Hub**' being created in Swanage (4 Pages), the now up-and-running environmental organisation '**Planet Purbeck**' and, the latest news from **The Swanage Medical Practice** re the local Covid-19 situation. There are of course other article of news, ideas, activities and plans from many of the groups in our communities.

So, keep positive, keep safe and keep on with your contributions and support to your clubs, associations, charities and public services and our Newsletter.

Mel Norris,

Chair Swanage Area Forum and Swanage & Purbeck Development Trustee

melvyn.norris@icloud.com



Photograph by Gwenda Yeomans



The Swanage Medical Practice

SWANAGE MEDICAL PRACTICE - IMPORTANT FEBRUARY NEWS

In January the COVID-19 virus and the vaccine both arrived in Swanage and the Purbeck area, so how have we fared?

From about 7 cases at any one time in December (in the Swanage area) this rose to 30 then 60 - and at the beginning of February, was slightly down to 30.

Very many thanks to everyone for staying at home, social distancing and washing hands. Without these measures, cases would have continued to rise and be very much higher now.

Our local hospitals have been working at capacity to care for the severe cases, seeking back-up capacity for Intensive Care and rehabilitation.

The Hot hub for seeing potentially COVID-19 positive patients at Fernside, Poole is being used to capacity and is seeing Purbeck patients as well. The COVID-19 Remote Monitoring Service has increasingly evaluated the symptoms and oxygen level of at-risk patients, enabling admission in time for successful intervention.

This new variant virus has shown us its increased ability to transmit and unfortunately an increasing number of our local residents have been unable to recover from it.

This has included a number of our care home residents. I would like to send condolences to all those families affected, from myself and all the Practice.

I would also like to thank all the care staff, nursing staff and practice staff who have worked extensive and traumatic hours caring for these patients. They deserve all the support possible.

PROGRESS SO FAR - AND WHAT'S TO COME

Friday 8th January we heard the vaccine would be coming to Purbeck and Thursday 14th was our first day, managing 377 Pfizer vaccinations at the Wareham CVP (Covid Vaccination Hub) mostly people over 90 .

On Monday 18th January we started vaccinating in the 8 local care homes, their residents and their staff, and completed all that wished or could have the vaccine by the end of the week.

On Monday 25th January a dedicated team of 2 district nurses started vaccinating housebound patients on a geographical basis of those identified, 2 areas in Swanage on Mondays and Tuesdays and Wareham on Wednesdays. This team has now done nearly 200 home visits with about another 100 to go.

As of 5th February we have now done 6,867 vaccinations, 2697 aged over 80 , 1,972 aged 75-79, 1,326 aged 70-74 .

By 12th February we will have offered or done a first vaccination to the vast majority of those in Priority Groups 1- 4. This includes those mentioned above, as well as health and social care staff and those in the Clinically Extremely Vulnerable group (CEV / Shielding group).

Very many thanks to the staff at the Wareham hub, the team of volunteers and local practices who have all put in many extra hours to enable this and the continued normal GP practice services, also to the community that has rallied round and got very nearly every one to their allocated appointment.

We are very thankful that we have had to deal with very few requests for appointment changes from this age group and would ask this continues, as any time dealing with such prevents staff helping other patients.

Priority Group 5 (65 to 69 year olds) and Group 6 (Clinically Vulnerable (CV) group).

We hope soon to be given the go-ahead to invite Priority Group 5, then Group 6 for vaccination. Priority Group 6 is very similar to those under 65 who would normally be offered a Flu jab. Each practice will identify patients using a mixture of age and other factors to prioritise the order to call in within this group.

VACCINE FLOW

We are very lucky now to be receiving a regular vaccine flow, but are still unable to put any orders in for it. We get little warning as to when it is arriving and which form it takes. The invitation is for a Covid vaccination type unspecified (except for those who have a history of anaphylaxis - a severe allergic reaction to venom, food, or medication - to multiple drugs or of unknown cause) who will be offered the AstraZeneca vaccine at specific clinics. Generally, we cannot be certain which vaccination the hub will be using when you arrive and if you are unwilling to have the one in use you will be asked to leave.

It is great to see so many of our high-risk residents getting vaccinated and know we will get to everyone in turn. At present our second vaccinations are booked, a few at 10 weeks but most at 12 weeks. This means that unless we can increase our rate of vaccination significantly there will be a 12 week period from the 25th March when only a limited number of first vaccinations can be done. I hope the vaccine supply will have improved and we will have taken on increased numbers of volunteers and staff by then to prevent this. *(Please see our website for details as to how to volunteer).*

Vaccination is going to be our way out of the pandemic, please support everyone in the community to take it up and help the NHS deliver it.

For the time being though, most people have not been vaccinated and any reduction in protective measures by those vaccinated, or not, will result in a resurgence of cases, so we must all continue all the measures to deny the virus its chance...

GOOD NEWS

Other good news in Swanage is that the new year brings new voices (and faces to those needing to come in to the Surgery) to our team.

Dr Kate Thompson joins us as GP Registrar for her second year in a GP practice.

Christna Boghian joins the Practice nursing team

Shelly Basharn, Advanced Nurse Practitioner, joins our Duty team and will also be available for more routine consultations.

Dr Andrew Mackintosh who has already been helping us has agreed to join our team as Partner in March. With the vaccine, new staff, excellent surgery team and supportive local community we can look forward to getting the virus under control and progressing the care we can offer to all.

Remember: "HANDS (wash), FACE (mask), SPACE (2m)"

Dr Jason Clark, Senior Partner,

Swanage Medical Practice [website: www.swanagemedical.org](http://www.swanagemedical.org)

YOUR INVITATION FOR YOUR VACCINATION

At present all Purbeck patients are invited by phone call or letter to attend the Wareham CVP, they may also have received a postal invitation to attend a national mass vaccination site or chemist. Unfortunately, we have no control or knowledge of these other invitations going out, so you may end up with receiving one invite having already booked another.

If you already have a Purbeck vaccination booked, I would suggest keeping it despite another offer. If you receive the national offer first, it is your choice to take it up, or wait till you receive a Purbeck offer.

It takes about 24 hours for either vaccination to be recorded in your records which will then stop us initiating another invitation.

NEW WAY OF BOOKING TRIAL

For the clinic on 16 February we hope to be trialling a new way of booking into the Wareham CVP via text message run by our clinical messaging service Aacurx, with a text similar to below:

Dear Mr Clark,

You have been invited to book your COVID-19 vaccinations.

Please click the link to book your vaccination times: Book nhs.uk...Purbeck Primary Care network

This takes you to a page saying Wareham hospital and continues to a page asking for your date of birth, then to a page offering a choice times you can book.

Once you have booked an appointment you will receive a text with the time and date booked and that it will be at Wareham hospital. Then there will be another link in case you need to amend the booking.

If you have a mobile number but have not informed the surgery please let us have it and a note to say what sort of information you are happy to have texted to you.

NOTE: If this trial is successful we will extend its use, but we will still be phoning or sending out letters to those for whom we do not have mobile numbers, or who are unable to use this system.

SWANAGE AMBULANCE CAR



The Swanage and Purbeck Paramedic Car was called out 996 times in 2019 to Swanage and immediate villages (Langton, Worth, Studland) alone. This does not include call outs to Corfe and wider Purbeck.

The almost a thousand incidents that the Car attended, covered the whole severity range: cardiac and respiratory arrest, drowning, choking, breathing problems, stroke, heart attack, sepsis, traumatic injuries, falls, as well as standing in for GP home visits.

Do you have a story to share about how the Paramedic Car has helped you? Please contact Mel Norris, Chair of Swanage Area Forum and Trustee of SPDT

By email: melvyn.norris@icloud.com or phone and leave a message with your name and contact details on 01929 426127 and we will ring you back.

The petition is now over 4,500 signatures - please continue to sign and share:

<https://you.38degrees.org.uk/petitions/save-swanage-ambulance-car>



Debby Monkhouse, Swanage Town Cllr said:

"People may not realise that the Paramedic Car is a 4-wheel drive so it can reach places much harder to reach – for example to the South West Coast Path above Dancing Ledge - and maintain life while waiting for the Helicopter, where a Double Crewed Ambulance can't get anywhere near a patient in these circumstances."

"There are many situations where patients might have died had the Car Paramedic not given medication before the Ambulance arrived. Typical examples include asthma, anaphylaxis and heart attacks, where the Car Paramedic can resuscitate people."

"The Clinical Commissioning Group have said that they would engage with our community 'early in 2021' and we continue to gather information, and stories, to make our case."



Photograph by Gwenda Yeomans

Overview

Case rates have continued to decline over the last week, and we'd like to thank everyone who has played their part in this by following the lockdown rules. The rates are still high which means it is too early to relax or become complacent - for comparison, at the end of the second lockdown on 2 December, case rates in the Dorset Council area were around 40 per 100,000 and around 70 per 100,000 in the Bournemouth, Christchurch and Poole (BCP) Council area.

The number of patients in hospitals across Dorset with COVID-19 has started to fall. However, this number is falling from a very high level so our health system continues to be very busy and any increase in cases could cause pressure to increase quickly again.

Sadly, due to the number of patients who have been in hospital with COVID-19 and outbreaks in care settings, COVID-related deaths have continued to rise.

Please continue to follow the rules - it really does make a difference. We are still in a national lockdown so only leave home for essential reasons. With one in three people not having any symptoms, any breaking or bending of the rules could easily see a rise in cases again. You may feel fine but if you're not following the correct measures you can easily pass the virus on to someone vulnerable with serious consequences.

Latest data

The visualisation below shows the seven-day case rate, people in hospital beds and deaths for the latest data periods available. There can be a time lag to allow us to report the most complete data. We provide this local update weekly, but you can find information daily on the [Public Health England data page](#).

Summary of the most recent data

7 day case rates per 100,000

- o BCP: 369.8 (compared to 592.4 in last update on 29 January)
- o Dorset: 207.4 (compared to 264.5 in last update on 29 January)

Confirmed Cases in last 7 days

- o BCP: 1,462 (compared to 2,342 in last update on 29 January)
- o Dorset: 785 (compared to 1,001 in last update on 29 January)

Current COVID-19 patients in hospital beds in Dorset:

- 386 (compared to 537 in last update on 29 January)

Data for specific local areas

The government data website has lots of national, regional and local information. You can search by postcode or use the interactive map to [find out more about the situation in your local area](#).



Key settings

Care homes

Due to the high number of cases of COVID-19 in our communities we have also seen an increase in the number of outbreaks in care settings across Dorset. We are working closely with those settings and key partners to monitor the situation and provide advice and support wherever it's needed.

The government has provided guidance on care home visits. We are working closely with the care sector to support them with this. If you wish to visit a relative in a care home, please speak to the home about their visiting policy before you arrive. Where care homes have identified outbreaks, visits are only allowed in exceptional circumstances.

Schools

We have well-established processes in place to work closely with affected schools to respond to cases, ensure all necessary measures are implemented and identify and advise any close contacts to self-isolate. Schools with confirmed positive cases communicate directly with parents and carers regarding any actions that need to be taken and any changes to school provision. All close contacts of confirmed cases are contacted and advised to self-isolate, so other members of the school community do not need to self-isolate and should not get tested unless specifically directed to do so.

NATIONAL LOCKDOWN RULES

You must not leave your home, or be outside of your home except where absolutely necessary.

YOU MAY ONLY LEAVE THE HOME TO:

- 1. Shop for basic necessities, for you or a vulnerable person.**
- 2. If you cannot do so from home, you may do so to go to work, or provide voluntary or charitable services.**
- 3. Exercise with your household (OR your Support Bubble) OR one other person, ONCE A DAY.**
- 4. You should not travel outside your local area.**

Have you got a COVID story to share?

We are looking for people to take part in case studies that we can share in our communications to help people understand the seriousness of COVID-19 and the impact it can have on individuals and families.

Do you have a story to share or do you know someone who does? Perhaps you've been very unwell with COVID-19, needed treatment in hospital or have taken a long time to recover from it.

Real life experiences from local people are a really effective way of helping people understand why it's so important to follow the rules. If you'd like to take part, please email us at

PHDComms@dorsetcouncil.gov.uk.



Covid-19 vaccinations: keeping you informed and learning from your feedback

In response to Covid-19, the NHS has launched one of the largest public vaccination programmes ever. We can help you find the latest official information and advice about the vaccine and other local health and social care services. [Visit our website](#) for useful information and links, and please [get in touch](#) if you have questions about vaccinations or any other services.

To help local services and national policymakers understand how they can improve the vaccination programme, we will soon be asking local people to feedback about their vaccination experiences. Look out for more information on our website and social media (see below).



Help with transport to Covid-19 vaccinations

If you, or someone you know, needs help getting to your Covid-19 vaccination, there are several local community transport schemes available. [Find out about local services here](#)

You can also contact [sedcat](#) (South East Dorset Community Accessible Transport), as they have extended their service to help more local people travel to their Covid-19 vaccination appointment.

To book, call 01202 534027 (10.00am-2.00pm) weekdays.

Dorset Council asks: ‘What does a good day look like?’

Dorset Council’s **Better Days adult services team** are asking people to tell them what they do during the day, how they are supported, and what a good day looks like. They want to know, for example, about how people use day centres, community groups or respite services; about work and volunteering; and about the support people get from personal assistants, family and friends. Dorset Council will use public feedback to help develop daytime opportunities for local people.

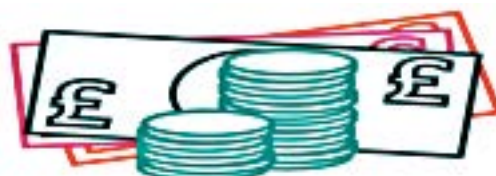


You can get involved by completing an online survey by 26 March adultsocialcare.dorsetcouncil.gov.uk/be-part-of-your-community/take-part-in-our-live-consultations/#,
call 01305 228554,
email abetterlife@dorsetcouncil.gov.uk,
or book to join a live group chat on 1 or 17 March.

Grants available from Communities against Cancer

It’s World Cancer Day on the 4 February and Communities against Cancer has received funding from the Wessex Cancer Alliance to provide grants to individuals, groups and not for profit organisations. Grants can be used by groups in creative ways to engage with the people they’re supporting to get across key cancer messages. Cancer is more treatable the earlier it is diagnosed, so it’s important that people attend cancer screening and go to their doctor if they notice something unusual for them - early diagnosis saves lives.

Groups and individuals from across Dorset can apply for a grant of up to £5,000 (started from January 2021). [Find out more details here](#)



Scam Alert

URGENT VACCINATION SCAM WARNING

Deputy Mayor of Swanage, and Swanage Town Cllr, Avril Harris has an urgent warning to put out to our communities.

Avril said: "On 28 January I received an email which said it was from the NHS about getting my COVID vaccination. "This email asked for all my personal details, including my banking details and my password. I knew straight away this was a scam, preying on vulnerable people waiting for their COVID vaccination appointment. It is truly despicable.

"Everyone waiting for their vaccination will be notified by either a **genuine letter or a phone call** from our **LOCAL** Vaccination Hubs, or our surgeries, advising you of a date and time for your appointments.

Our NHS Vaccines are **FREE - THERE IS NO CHARGE.**

"Please be warned. Do not respond to this scam email."



DORSET POLICE ARE ALSO URGING PEOPLE TO WATCH OUT FOR THESE FRAUDULENT MESSAGES

Dorset Police points to several key indicators that a Covid vaccine message or offer is a scam.

The NHS will under no circumstances ask for bank account or card details, nor will they request a PIN or any other banking password.

Real NHS messages will never ask for personal documents such as passports, driving licences, bills or payslips as proof of identity.

Emails are not the only way scammers may look to exploit the vaccine rollout. They may also attempt to send fraudulent text messages.

No one will ever come to a home unannounced to offer the vaccine – and residents should not trust anyone who tries.

An example of a fraudulent vaccine email

NHS Search

Health A-Z Live Well Care and support Pregnancy

[Coronavirus vaccination](#)

Confirm your coronavirus vaccination

You are selected

The NHS is performing selections for coronavirus vaccination on the basis of family genetics and medical history. You have been selected to receive a coronavirus vaccination.

Use this service to confirm your a coronavirus (COVID-19) vaccination.

You will need to:

- have 2 doses of the coronavirus vaccination at 2 appointments
- book both appointments at the same time
- get the 2nd dose 11 to 12 weeks after getting your 1st dose

Who can use this service

You can only use this service if you have received an email/SMS regarding this invitation. You can not use this service for anyone other than yourself.

You are also free to reject this invitation, your appointment will be issued to the next person in line in that case.

Please confirm or reject your invitation by selecting an option below.

Reject invitation **Accept invitation**

DORSET POLICE



FRIENDS OF SWANAGE HOSPITAL

<https://www.friendsofswanagehospital.org.uk/>

FEBRUARY NEWS

Because of Covid and the Lockdown, unfortunately, some of our Outpatient clinics have had to be suspended because the consultants have been redirected to help with Covid patients in Bournemouth and Poole hospitals. However, there are still a large number that are running.

Some of the building work needed in the department has been finished: the waiting room has been extended, part of it has been converted into a medical equipment store and the kitchenette is now sister's office. We have agreed to fund the conversion of a large store area into another consulting room but that is on hold at the moment. A review of Outpatient services is expected by the end of the month.

Of course our next project, renovating the ward area, is also on hold but the money has been committed and we hope work will start later in the year.

A reminder that you can't just pop into MIU at the moment you have to ring first and the number has changed – it is now 01929 557563

Some of our staff are working over at Wareham Hospital and it is great to know that so many Purbeck patients have been vaccinated. So we send our grateful thanks to all our wonderful staff and volunteers for the demanding work they do and if you feel able to help us support them and the hospital, then do have a look at our website and join the Friends:

<https://www.friendsofswanagehospital.org.uk/>

Jan Turnbull - Chair



"HELLO" FROM THE FRIENDS OF WAREHAM HOSPITAL

The Covid Vaccination Centre at Wareham Hospital is now in its fourth week and has done an amazing job in Purbeck with 70+ year olds being called for vaccination.

The GP Practices across the area are working together as the Purbeck Primary Care Network and arranging the vaccination appointments either by sending letters or telephoning patients. Either way, each of us will be contacted, so we do not need to call our individual practices to ask for the jab.

Having a nursing background, I volunteered to help with vaccinations and can report first-hand on the work being done having completed a training programme and now having worked two full days with such a special group of people.

The atmosphere in the clinic is welcoming and friendly for patients and staff and it is lovely to be part of such important work. There is an army of volunteers supporting the work both inside and outside the hospital aiming for a speedy journey through the clinic. However the weather has not been good at times and it is always disturbing when some people get wet when waiting.

The infrastructure to support this clinic is immense with many working long hours and doing weekend duties to offer clinics when vaccine is available; the vaccine delivery is often notified at short notice.

As the Friends group, we remain delighted that the clinic is being held at Wareham Hospital which lends itself well to the vaccination work whilst continuing, at the other end of the hospital and away from the vaccination centre, the out-patients clinics including the valued Chemotherapy clinic for Purbeck patients.

This will have created increased challenges for the staff but we thank them for all they are doing.

There was a time, in recent years, when people said they did not know that there was a hospital in Wareham; sadly, it takes Covid to change that but it is an integral part of our local services particularly at the moment and we send our heartfelt thanks to all concerned.

We would welcome new members to the Friends and or funding to help us support all the work in the hospital and through the Purbeck Community services - please do contact us through the hospital if you can help us.

MAGGIE HARDY, FRIENDS CHAIR
Charity number 252073

SWANAGE COMMUNITY HOUSING GROUP

During January we interviewed four people who had expressed interest in joining the Steering Group to establish a Swanage Housing Group whose aim is to provide social housing for the community. As a result, they were all invited to join the Group. This means that the Group has a strong multi-disciplinary committee with experience and enthusiasm to start practical work getting this project off the ground.

We will be meeting very shortly to agree the first steps in Incorporation, Structure and Programme. As soon as we have made some progress, we will be communicating with all the people who expressed interest at our public zoom meeting last November.



Robin Sutcliffe, SPDT Trustee

WAREHAM HOSPITAL COVID VACCINATION CENTRE



*'I heard from someone today that
their COVID vaccination
appointment went very well.
Smooth as Silk! Well organised and
no problems at all.
Such a relief ...'*



A message from the Mayor of Swanage, Councillor Mike Bonfield

January 2021 - what a start to the year! Being locked down has been hard for us all, especially as the weather has not been kind.

The good news is that the Covid vaccinations started in mid-January and as I write this the Hospital in Wareham is doing a sterling job. I thank all our Purbeck doctors, their staff and the many volunteers that have been instrumental in the vaccinations running so well.

Dorset has been so lucky up to this lockdown, in that the virus has been kept at bay, by the majority being sensible and abiding by the guidelines. Unfortunately, as I am sure many of you have heard, in the last few weeks not only Dorset but also Swanage has seen an increase in the number of people testing positive. Our thoughts go out to all of those affected by the virus as I am sure that it must be such a worrying time.

We must all carry on supporting each other and doing what we are able to help those that may be finding it exceedingly difficult at this time. It has been so good to see our voluntary organisations assisting those in need and our local businesses again being there to support us with deliveries.

The Town Council has been busy with budget setting, and if you are able to visit Days Park when out for your exercise you will notice that the refurbishment of the play area is nearing completion. We have also been planting some new trees around the town as part of our environment policy action plan, which can be read on the Council's new webpage at

www.swanage.gov.uk/environmentpolicy.aspx

We must all try and look to the future, however hard that might be. It was so sad to hear, the passing of Captain Sir Tom Moore. He was an inspiration to us all during this time. He was always so cheerful and inspired us with his words. One of his sayings was : "We will come out of this". I'm sure that we are all thinking of him and his family at this sad time. Hopefully, by the time I am writing for the March issue, we will have more information about the route out of lockdown; the days will be getting longer and the weather should be getting a little warmer.

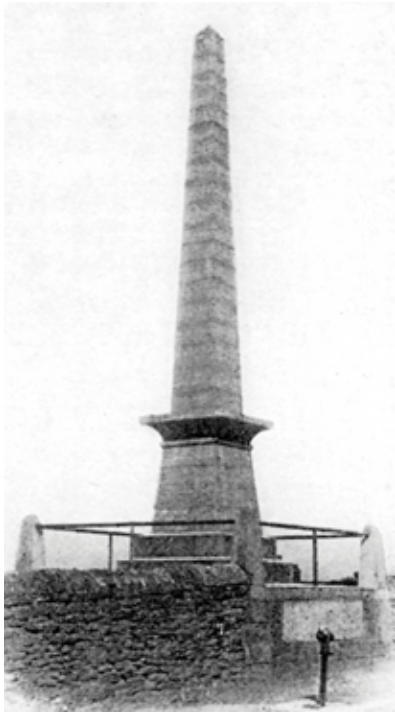
Keep safe.

Cllr Mike Bonfield



Website: www.swanagemuseum.org.uk

e-mail address: museumswanage@gmail.com



Work has commenced on getting the Swanage Albert Memorial in place at Prince Albert Gardens on the Downs. If everything goes to plan it should be in place by the end of May. Here are some pictures of the site. By next week it will not just be fencing but work will commence on clearing the site. STRESS are the main contractors, using local sub-contractors, and the project is being managed by Swanage and Purbeck Development Trust



The site at the top end of Prince Albert Gardens



At St Aldhelm's Quarry where the memorial has spent the last 50 years



A Dorset National Park - for People and Nature

Have you been watching Sir David Attenborough's amazing TV programmes "A Perfect Planet?" A big message from these is that nature does so much for us all, in ways we can see and feel – fresh air, clean water, healthy soils to grow nourishing food, not to mention the mental and physical health and wellbeing benefits of the natural environment, which we've all appreciated more during the long months of the pandemic. Some of the ways in which nature helps and supports us are not so obvious, but very important, such as natural flood prevention and waste management, and the fact that nature has been absorbing most of the carbon that mankind's activities produce. Nature can continue to do this, with our help - for example, caring for and planting woodlands and hedgerows, ensuring soils are healthy and land use sustainable, and using energy carefully so we don't overload nature's ecosystems.

We in Purbeck and Dorset are fortunate in our lovely environment, but we can sometimes take it for granted. We may not realise that wildlife here has suffered serious decline. We need to help our natural environment and wildlife recover. The government, in its recent 10 Point Plan for a greener future, has committed to create new National Parks for England. Dorset is widely seen as the leading candidate to be England's next National Park. It would bring great opportunities and benefits for our communities, economy and environment throughout Dorset, and help ensure a thriving, healthy future. It would have the duty to respond to local housing needs – including truly affordable homes for young people and families. Please encourage your local council to support the proposed Dorset National Park and help to make this a reality – for people and for nature! You can sign up for e-news here:

www.dorsetnationalpark.com

The Dorset National Park Team



New Calf, Purbeck - Photo: Richard Brown January 2021



Ridge Wharf - Photo: Vicky Barnes



DORSET COUNCIL LOCAL PLAN PUBLIC CONSULTATION

Something that all residents in Purbeck need to be very aware of, is that there is a vitally important Public Consultation on the **DORSET COUNCIL LOCAL PLAN**, which opened in January and closes on **15th March 2021**. The outcome of this Plan, when agreed, could well affect the lives of all who live in Dorset.

Because of Covid and the lockdown, the Draft Plan is only available online and at the moment, there seems little alternative to completing this document in this way. Some people do not have access to (or the knowledge of the technology) to complete public consultation documents of this importance online. So how, then, are they supposed to get their views known if they then have to return these 'on loan' copies to the library? How are they meant to express their views and have them taken into account?

We understand, however, that there are 'some' hard copies of the Plan available at Swanage Library for people to pick up via their normal 'Order and Collect' service; but we believe these hard copies are only available 'on loan' [*whatever that means*].

To read the whole document you can go to;

<https://www.dorsetcouncil.gov.uk/planning-buildings-land/planning-policy/dorset-council-local-plan/the-plan/pdfs/dclp-jan-2021-vol-2-south-eastern-dorset.pdf>

We have extracted just 8 pages which relate to the SWANAGE area, to give people in Purbeck a flavour of what to expect... so that they are aware of its importance and the deadline for their thoughts and decisions on the outcome of the proposed plan, which could affect local people and their families in many ways, either positively – or negatively.

QUESTION FOR DORSET COUNCIL ON THE LOCAL PLAN PUBLIC CONSULTATION

Due to the current and unique situation we all find ourselves in, is it not reasonable for Dorset Council to reconsider the very short time scale for public consultation, and significantly extend the closing deadline? And to seek other reasonable ways of reaching all the people in our communities to allow them to make their views known.

13. Swanage

13.1. Introduction

- 13.1.1. Swanage is the largest town in the Isle of Purbeck area. The population of the town is just under 10,000 with a considerable proportion (34%) over 65 years of age. The area has a particular need for housing for older people.
- 13.1.2. Swanage is located on the Jurassic Coast World Heritage Site and within the Dorset AONB and hence the landscape around it is sensitive to change. Throughout the town are numerous heritage assets and a large proportion of the town is designated as a conservation area. There are important biodiversity sites around the town including several that form part of the 'Natura 2000' network.
- 13.1.3. Swanage is a popular tourist destination, attracting a significant number of staying visitors, boosting the population during peak holiday season. Its attractions include Durlston Country Park (a national nature reserve with spectacular walks, stunning views along the coast and wide variety of wildlife) and the Swanage steam railway.
- 13.1.4. The attractiveness of the area has resulted in a significant proportion (at around 17.8%) of second homes and holiday rentals, both of which support the important tourist sector in the town. Like much of Dorset, housing affordability is an issue with average house prices being considerably higher than the national average.
- 13.1.5. The main challenge for the Swanage area is to ensure its sustainability is maintained and enhanced by reducing the need for residents to travel out of the town for work, shopping and leisure. This all needs to be achieved whilst protecting the outstanding natural environment that makes it popular.

13.2. Vision

- 13.2.1. In 2038, Swanage will:
 - be a vibrant friendly and welcoming community with the special character of the area being respected and enhanced;
 - have a thriving economy in a safe environment.

13.3. Development strategy

- 13.3.1. The Swanage Local Plan¹³ made provision for 200 homes over three housing allocations. Two of these allocations, Prospect Farm and Northbrook Road West,

¹³ A separate local plan was produced for the Swanage area and was adopted in 2017

have secured planning permission. Prospect Farm housing development is complete and Northbrook Road West is under construction. The remaining allocation at Northbrook Road East remains undeveloped but will be completed in the short term. Further land has been identified for development to the west of the town.

- 13.3.2. The employment sites that serve the town are both vibrant but have little space available for further development. Future employment space could be met through regeneration of the town providing office and starter units.
- 13.3.3. Development opportunities at Swanage include:
 - Land at Northbrook Road East which will be developed in the short term delivering around 90 homes;
 - Land west of Swanage Allotments, which is proposed as a development site to deliver around 150 new homes; and
 - Regeneration of the town centre.
- 13.3.4. There are internationally protected heathlands in the wider surrounding area and it will be essential that any adverse impacts from additional recreational pressure are avoided. Sufficient attractive informal recreation land will need to be made available within easy walking distance of development through the provision of a strategic network of green spaces (SANGS). In order to maximise housing land and the community's access to green spaces a coordinated approach is required between developers, Dorset Council and Natural England.

13.4. Town centre strategy

- 13.4.1. Swanage is identified as a town centre within the retail hierarchy for the plan area. It forms an important service centre for the remote parts of the Isle of Purbeck and also serves as the main centre for the tourist population in this area during the peak summer months.
- 13.4.2. The main town centre uses are concentrated along Station Road, Commercial Road and High Street. The town centre boundary shown on the policies map includes the main retail centre and many of the community facilities in the town.
- 13.4.3. The primary shopping frontages are located along Station Road and Institute Road where the main retail uses are located. The secondary shopping frontages are located along the High Street, Commercial Road and between the north-western end of Station Road and Co-op store (situated off Kings Road West). The secondary shopping frontages offer potential for the accommodation of a wider range of town centre uses.

- 13.4.4. Within the Purbeck area there is limited need for additional comparison (non-food) floorspace, however there is a need for additional convenience (food) floorspace to serve both Wareham and Swanage. The need should be split between the two towns with a convenience store of around 700 m² being provided within the Swanage town centre either as a new stand-alone store or as an extension to an existing unit.
- 13.4.5. The town centre is entirely within the Swanage Conservation Area where there are also a number of listed buildings. Development will therefore need to have regard to these heritage assets.
- 13.4.6. The Swanage Local Plan focused on town centre redevelopment opportunities to improve the quality of the street scene, with particular opportunities identified in three main locations. Two of these opportunities would be suitable for town centre uses subject to the relocation of the existing uses, which could be moved to the third, the former depot site off Kings Road West.
- 13.4.7. Land between Kings Road West and the railway station has the potential to accommodate the majority of the retail needs for Swanage and is sequentially preferable. This site includes the existing Co-op store, the adjacent car park, the health centre, bus depot and fire station. The area should be enhanced as a result of any development, recognising the importance of the railway station and associated Grade II listed goods shed to the town centre.
- 13.4.8. The Post Office sorting office could be relocated out of the town centre to a more appropriate location freeing up a prime town centre site for redevelopment.
- 13.4.9. The former depot site at the junction of Court Road and Kings Road West is also suitable for redevelopment and could provide for the relocation of existing uses from the two sequentially preferable town centre redevelopment sites.

SWAN1: Swanage town centre

- I. The boundary of Swanage Town Centre is shown on the policies map along with the primary and secondary retail frontages.
- II. The preferred locations for additional town centre uses to serve Swanage, as shown on the policies map, are:
 - between the railway station and Kings Road West;
 - the former depot site at the junction of Court Road and Kings Road West; and
 - the Post Office sorting office on Kings Road East.
- III. Development of these sites must respect the character of the conservation area and other heritage assets, and be integrated into the existing town centre through enhancements to the public realm.

13.5. Main development opportunities

Northbrook Road East

- 13.5.1. This site encompasses two areas, the former Grammar School and the adjacent area of former playing fields.
- 13.5.2. The playing fields to the north of the former school buildings have consent for 52 new homes, with SANG provision being made on the western side of Northbrook Road. The former school buildings offer a further development opportunity, subject to additional SANG provision that should be connected with that already agreed. It is therefore likely that the layout of the consented scheme will need to be reconfigured to provide a more comprehensive development of the two separate areas east of Northbrook Road.
- 13.5.3. Due to the site's location on the edge of the town, within the AONB and highly visible from the Purbeck Ridge to the north, the scheme would need to be of high design quality. In order to enable ease of access from the site to the town centre and to the adjacent St Mary's School, pedestrian and cycle links will be required along Northbrook Road and adjacent streets.

SWAN2: Northbrook Road East

- I. Land to the east of Northbrook Road, as shown on the policies map, is allocated for residential development.
- II. The development should:
 - be designed to offer a comprehensive scheme that maximises the benefits of development whilst respecting the sensitivities of the site in the landscape;
 - deliver a SANG that makes the most of the opportunities to connect with the SANG provided to the west of Northbrook Road; and
 - deliver enhancements to cycle and pedestrian routes to and from the site and into the town centre.

Land to the west of Prospect Allotments (proposed allocation)

- 13.5.4. Land to the west of the allotments behind Prospect Crescent is within a short walk of Swanage town centre and many of the town's facilities. The area is proposed for residential development delivering around 150 homes to meet the needs of Swanage and the surrounding area. A care facility should also be considered on the site to meet the needs of the town's increasing elderly population.

- 13.5.5. Some of the development around and within the site is prominent within the landscape and leaves a hard edge to the existing built form. In addition, there are a number of public rights of way that cross the site and provide access to the surrounding countryside. Given its location within the AONB, the design of any development on this site will need to fully explore opportunities to improve this edge of the town. The rights of way should be enhanced as part of the green infrastructure network, and existing hedgerows and trees should be retained and strengthened with additional planting to further soften the built form within the landscape.
- 13.5.6. Within the site, there will be a need to include a SANG to divert recreational pressure away from the nearby heathland sites in accordance with Policy ENV2. The northern edge of the site is particularly sensitive in views from the Purbeck Ridge to the north as it is elevated above the southern parts of the site. Built development is therefore unlikely to be acceptable in this location. The northern and western parts of the site would however be appropriate locations for SANG provision and would help to soften these edges in views from the surrounding AONB.
- 13.5.7. The existing network of footpaths that cross the site should be used to further improve connections for pedestrians and cyclists into the town centre and to nearby facilities. Wherever possible, new footpath and cycle connections should be made to make non-car travel as attractive and convenient as possible.
- 13.5.8. The density of development should decrease towards the western and northern boundaries.

SWAN₃: Land to the west of Prospect Allotments

- I. Land to the west of Prospect Allotments, as shown on the policies map, is proposed for residential development including the provision of a care facility.
- II. Development of the site should be of high-quality design and incorporate significant tree planting to soften the edge of the town within the AONB landscape. Planting within the site should further break up the built form.
- III. The northern part of the site should deliver an appropriately sized SANG to minimise impact on nearby heathlands and to soften the development in views from the Purbeck Ridge.
- IV. Development should make best use of existing footpath connections to enable convenient, safe and attractive pedestrian and cycle routes into the town centre and to nearby facilities.

Q: Land to the west of Prospect Allotments

- 1: Do you agree with the allocation of this site?
- 2: Is there anything not covered within the policy that should be considered in relation to the site?
- 3: Are there any community infrastructure needs within the area that should be considered?

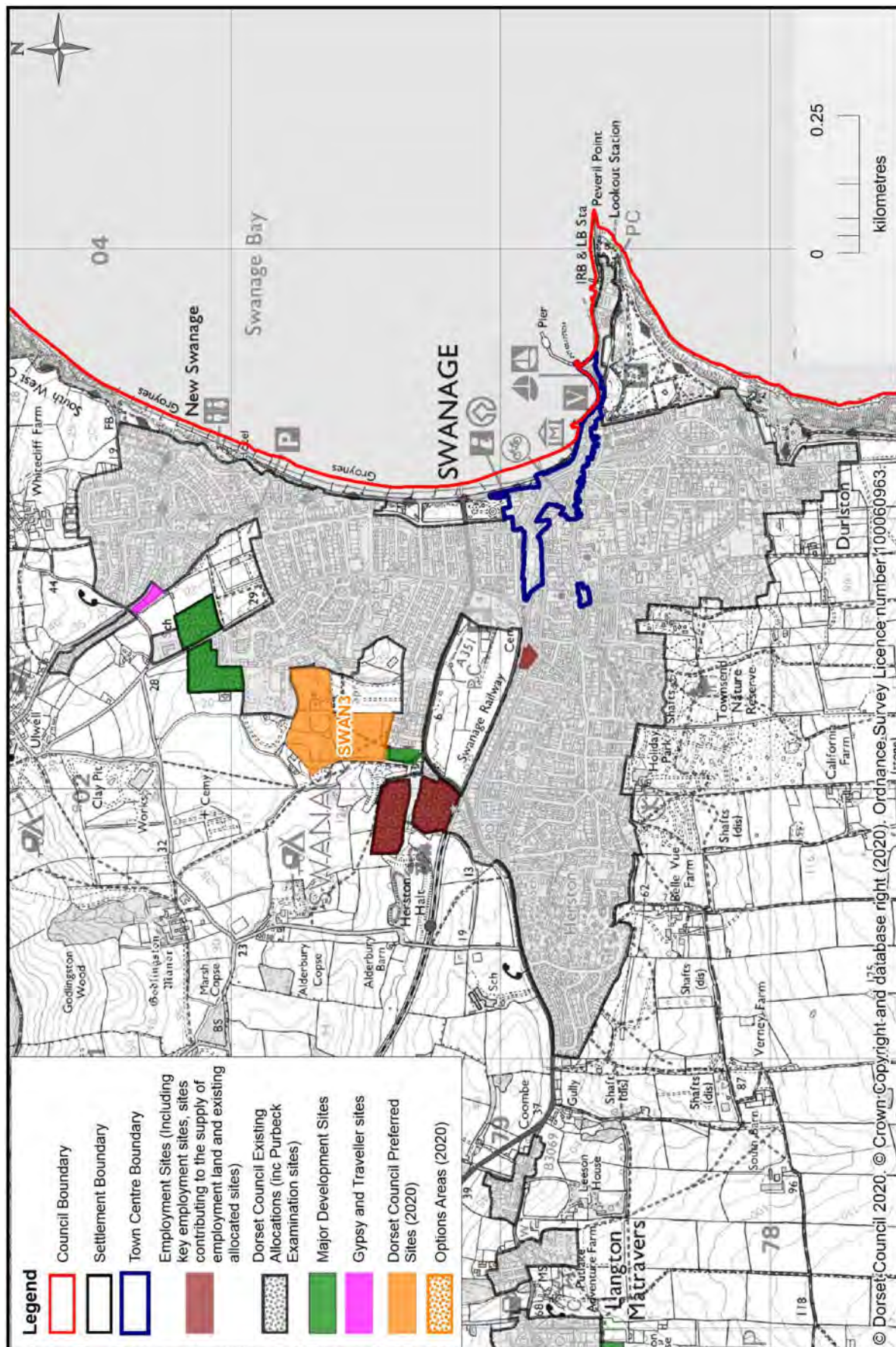
Swanage's townscape

- 13.5.9. The townscape character assessment for Swanage (2012) identified 19 separate areas of distinctive character within the urban environment. This assessment reviewed the key characteristics of each area and identified the main areas of value for the urban environment. The areas are categorised according to their ability to make a positive, negative or neutral contribution to the appearance of the town. There is also a close relationship between the character areas and the historic environment within the town, as the historic development of the town has played an important part in the creation of the urban environment.

SWAN₄: Swanage townscape character and development

- I. In order to conserve and enhance the existing townscape character of Swanage, new development should take account of the Swanage Townscape Character Assessment (2012).

Figure 13.1: Map of proposed development sites in Swanage





Hello from Dan

"Hello my name is Dan I am 25-years-old. I am a Volunteer ranger at Durlston. I have been here for 2 years and at the moment I work every Wednesday half nine until four. Before Durlston, I was at Employ My Ability for 3 years. It is an autism and disability college. After I finished at Employ my Ability I was looking for a work placement. I found Durlston online and thought it would be the right place to come to because its outdoors and I like it there. I also work at AgeUK in Swanage.

"At Durlston I do the work parties, the shed, and help out on the park. We do woodworking at the shed, making stakes, making bird boxes, and bat boxes. I do a bit of digging and help out moving stones for walling. I also help with the scrub bashing so we can look after the habitats and the park.

"I meet different new people at the shed. I enjoy having a laugh and seeing my friends Brian, Jean, and Gerald. At Durlston I like the woodland because it's nice and quiet.

"The rangers are very nice to work with. Me and Ben have a competition every year to see who wears the shorts the longest. This year I won the shorts competition, staying in shorts until December."

Durlston Podcasts

If you would like something to listen to, while at home during lockdown, or enjoy these newsletters and would like to find out more about Durlston, thanks to Friend of Durlston and former BBC radio editor Ian Harkness, and Purbeck Coast Radio, you can now listen to podcasts about Durlston from the Rangers!

Follow the link here to listen to Ian and Ali chat about the Pleasure Grounds, wildlife, nature and health and how we manage the park for wildlife. <https://www.durlston.co.uk/Audio-Tours.aspx> We are planning future podcasts, focussing on a specific aspect of Durlston, so if there is something you would like to learn more about, let us know!

Sunnydale Planting

With our winter tree work now complete, we will shortly be starting some new planting around the 'Sunnydale' area of the Pleasure Grounds. The rangers, specialist volunteers, a landscape architect, Natural England, Dorset Gardens Trust and others have worked together to develop plans, which will boost biodiversity in this area. The almost year-round flowers will be of great benefit to pollinators while the berries of the Winter-flowering Cherry, Mahonia and Spindle offer a vital food source to local wildlife.

Thanks to the work done by tree surgeons the area is now light and airy enough for us to add a sprinkling of bulbs and shrubs, to enhance the original George Burt plantings, such as the Cherry Laurel, Japanese Laurel, Japanese Skimmia and Arrow Bamboo.

Many of these important Victorian elements which made up Burt's vision of the area have been lost, as Holm Oak has become more dominant and adding a few carefully selected plants will enrich the area for people, wildlife and reflect Burt's vision. Meanwhile, the tree work in the rest of the woodland is now allowing these areas to develop in a more naturalistic way, with lots of young Elms, St. John's Wort, Hazel and Ash already appearing.

The carefully planned addition of a small selection of plants at Sunnydale will enhance the area for both biodiversity, heritage and landscape.

A special thank you to volunteers Sylvia, Con and Theo who helped develop these plans and to Theo for the lovely 'concept sketches'





'Unmasked'

Thanks to a collaboration with *Arts in Hospital* and *Dorset County Hospital*, if you live in Swanage and are visiting Durlston for your daily exercise, you can enjoy an unusual and uplifting outdoor exhibition!

Photographer Andy Scaysbrook, journalist Emma Pittard and designer John Nesbit, have worked together to celebrate the amazing medical, health and care staff who are working so hard to look after us all! The exhibition was originally planned to take place indoors, but instead has been set up so you can safely view these wonderful images and quotes from outside.

The exhibition features many faces from Swanage, so see who you recognise! If you are not able to visit at the moment, don't worry, you can still enjoy the images online here: <https://dchartsinhospital.org.uk/>

Swanage Landfill Site Restoration

A former landfill site, may seem an unpromising place for wildlife, but thanks to a partnership with Swanage Town Council and to lots of recent work, the old 'Tip' site at the top of Swanage is becoming an increasingly valuable habitat.

It was first used as a landfill site in 1930 filled with inert, industrial, commercial and household waste. The site ceased operation in 1999 and the recycling centre closed in 2009. The site was then capped with clay to a depth of 1 metre and vents were installed across the site to let the methane gas released by decomposing waste, escape.

In 2013 Durlston agreed a 21 year lease, with Swanage Town Council for the former landfill site and adjoining fields, so that they could be managed for wildlife. The management plan puts objectives in place to restore the area to wildflower downland, supporting not only wildflowers, but butterflies, bees, and many other invertebrates, while maintaining the integrity of the landfill site and monitoring its condition

In the beginning of 2020, we cleared the eastern and northern boundaries, allowing access to the old, derelict fence-line and during the first 'lockdown' we installed a new fence. Along the perimeter of the fence-line we will be able to plant hedgerow species to the north and create a grass verge to allow foot traffic off the road to the east.

A botanical survey in June 2014 found 136 species of plant including 11 Dorset Notables - Quaking Grass, Knapweed, Meadow Fescue, Ladies Bedstraw, Grass Vetchling, Fairy Flax, Common Bird's-foot Trefoil, Corky-fruited Water-dropwort, Mouse-ear hawkweed, Cowslip, Yellow Oat-grass along with Bee, Pyramidal and Common Spotted Orchids.

Working out there recently we have seen Roe Deer, Sika Deer, Weasel, Buzzard, Snipe and a Fox. The site plus the two adjoining fields have recently been grazed by our herd of Hereford cattle, which could be spotted on top of the hill from all over Swanage. Due to the nature of the area and clay capping daily inspections have been carried out to ensure the cattle do not poach the land.

The site will be integrated into the management plan of the wider Country Park, continuing the work and hopefully seeing a vast improvement in the next few years, so watch this space!





WellBeing SWANAGE

Together we can ensure that Swanage continues to be a compassionate community and plan for its future, long-term WellBeing



Dorset
Council

Better Days

Dorset Council are conducting a survey to find out how people are getting the social support they need from day centres, community groups, or personal assistants, family and friends. The council wants to find out how satisfied they are with the support and what more they need. The survey, which is called **Better Days**, will provide the Council with information to adapt their services to better suit people who wish to use them and ideas for enhancing social support within local communities.

The Better Days survey can be completed by anyone, but particularly those people who feel that they have social needs - are lonely, depressed or struggling with any physical and mental challenges. There is a separate, but linked, survey for people who are caring for someone who needs such support. Dorset Council also wants to hear from local groups about what they are providing, which can enhance individuals' wellbeing, reduce isolation and create a sense of connectiveness in their town or village.

So, it is an important survey, which will build a picture of what is going on at a very local level and whether people really feel that they are supported in their community. We in the **SWANAGE WELLBEING** group have asked Dorset Council to feedback to us the information about what you say is needed in the town, but we would be very pleased to get that information directly from you too. You can contact us by emailing our editor, Gerry Norris at melvyn.norris@icloud.com or phoning her on **01929 426127**.

You can complete the survey by entering the website 'adultsocialcare.dorsetcouncil.gov.uk', then going down the page to '**Be part of your community**' then click on '**Take part in our consultations**'. You can also phone Dorset Council for a paper version. The survey will finish on **19th February** for the Carers' survey and **26th March** for everyone else.



Swanage Stroke Club was formed in 1987 to recognise those who have survived a Stroke and their Carers, last year it became part of the Swanage + Purbeck Development Trust.

It is purely a Social club, giving those recovering/fully recovered from a Stroke the opportunity to socialise in a safe, friendly environment.

Sadly, due to Covid19 and the Lockdown, we have not been able to meet for the past year but we keep in touch with our members with regular phone calls and are all looking forward to resuming our usual activities, hopefully, in the Summer.

Meetings, usually on the third Saturday of the month are held at "Swanage Connect" (formally known as The Day Centre) and include an Entertainer followed by a home cooked lunch and Club business. We try to alternate these meetings with outings - usually on a Wednesday - to suitable local places of interest.

Transport – both to meetings and outings - can be provided using a minibus with full disabled access for those who need it, those who have survived a Stroke are welcome to attend with or without their Carer as we have volunteers who are always available to assist those with mobility problems.

We all have to look to the future with hope, so if you think the sort of social meetings and outings we have described here would interest and appeal to you, if you have had a stroke, or are recovering from one, do get in touch, and we can have a chat.

We always welcome new members so if you want further information please contact:

Margaret Pratt on 01929 475608, or find us on the Swanage + Purbeck Development Trust website.

Deirdre Selwyn, Secretary

WellBeing SWANAGE



Our new WI in Swanage opened in January 2020 with an amazing number of women coming along to Herston Village Hall to find out about us and what we were all about. We had two meetings and had attracted some 58 members which we were encouragingly surprised at, and so we thought what a great diverse WI we are going to have. The planning with our members started, and all the things we wanted to do and achieve were starting to evolve. Then, as we all know, the world changed along with restrictions on our lives. Everything we wanted and had planned to do was put on hold, but we kept in touch with our members by email.

By the end of November 2020, we had decided enough was enough and we would carry on regardless with our plans. Swanage WI would become a virtual WI until we could meet up. We also made plans to ensure that our members who didn't have access to digital technology would still be kept informed of all that was going on.

Currently all our meeting and groups are virtual, but this will change when the restrictions change. We are in the process of setting up Interest Groups along with lots of informative emails and electronic magazines being sent to our members. The Interest Groups we are starting up are Book Club, Knit & Natter, Walking Group and Cookery Club, with quiz nights and other groups being planned. Really exciting.

Our monthly Zoom meetings often include a talk from an invited speaker. Over the next few months we will learn about Brownsea Island, The Handwritten Letter Appreciation Society, Support Dogs UK, SOE Agent - Violette Szabo GC, one man's experience of emigrating to Britain, and we will hear from the woman who paddle-boarded 162 miles from coast to coast.

You are very welcome to visit us and join our meetings for a couple of months to see if this is for you.

If you are interested in coming to a meeting to see what it is all about or have any questions then please email us at Swanagewi@dorsetwi.org

We look forward to welcoming you to Swanage WI

Something to Celebrate!



JIM, 80, walks 255,308 Steps to raise funds for Swanage Dementia Friendly Group

Having been through 4 major stomach surgeries and not being able to eat or drink for the last 2 years, Jim Dicks, aged 80, had what will hopefully be his last major surgery in October 2020 and is finally back on his feet.

As part of his recovery, he started daily walking and after being inspired by [Alzheimers UK](#), who have set a walking challenge for people, Jim decided he would like to raise funds for the [Swanage Dementia Friendly Group](#).

Jim's wife Jean was diagnosed with dementia in 2017 and has been supported by the local Swanage community so well that Jim wanted to do something in return. Jim committed to walking an average of 8,000 steps a day in Swanage for the month of January, achieving an amazing total of 250,000 steps by the end of the month!

A [Just Giving](#) page was set up to raise the funds and within a day Jim had achieved his initial target of £200. Encouraged by the donations, both on the Just Giving page and cash given locally, he increased the target and on the 19th of January he achieved his goal with a total of 255,308 steps, by which time he had raised a magnificent £945.

Very Well Done, Jim!

Swanage Medical Practice Patient Participation Group

The Swanage Medical Practice Patient Participation Group (PPG) is made up of patients registered with the Practice who have volunteered to work with the GPs and the Practice Manager to help improve and shape local health services. All general practices in England have been required to have a PPG since April 2015.

The PPG provides a way for patients to get involved with the Practice and to influence decisions about local services - we want to ensure that all decisions taken about the way services are provided by the Practice reflect the experiences of patients using those services.

We aim to develop a positive and constructive relationship between the Practice and its patients – and the community served by the Practice.

We are also working with the Wellbeing Group for Swanage and the Social Prescribing Link Workers in Purbeck to support plans to set up a Wellbeing Hub in Swanage.

The PPG meets every two months. We have continued to meet throughout the Pandemic - although we are now meeting on Zoom. We last met on Tuesday 19 January 2021.

More information about the PPG can be found on the Practice website – including our Terms of Reference, current Membership and the Minutes of previous meetings.

How people can have their say

Tell the PPG about your experiences of using services provided by the Practice, particularly during the Pandemic, by contacting the PPG at: ppgswanage@gmail.com. For example, what have been your experiences of telephone and video consultations or of using eConsult - and what have been your experiences of using the COVID-19 Vaccination Service?

Join the PPG if you are registered with the Swanage Medical Practice – we are always looking for new PPG members. If you are interested in joining the PPG, please contact the PPG at: ppgswanage@gmail.com.

There is also a Patient Email Group, which includes patients registered with the Practice who have agreed to receive information by email about the Practice and the PPG – if you are interested in joining, please contact the PPG at: ppgswanage@gmail.com.

Purbeck Youth PPG

We are also working with the other five PPGs in the Purbeck Primary Care Network (PCN) to set up a Youth PPG for Purbeck. The organisation Participation People, which supports youth engagement and participation across the UK, has been commissioned by NHS Dorset Clinical Commissioning Group (CCG) to train young people to become Youth Ambassadors - they will liaise with the six PPGs and the PCN and form a Youth PPG for Purbeck. Please see Participation People's advert below:

We are looking for young people aged 13-18 from Purbeck to come together to help improve NHS Primary Care services in Purbeck. We will train you and help you to engage with decision makers in health to identify what is and isn't working currently, so that they listen to the voices of young people. You'll work with the decision makers to help create an awareness of why it is crucial for them to listen to, and act upon, the views of young people when developing and improving their services.

Please could any young people who are interested complete this Google form: <https://forms.gle/hFbuwcV4J9ymimgx8>.

If you have any questions please email ed@participationpeople.com.



The Isle of Purbeck Arts Club

The Isle of Purbeck Arts club has groups such as painting and poetry who meet regularly. During the various lockdowns we decided that if it was possible, we'd still like to meet to paint. Some of us chose to meet on Zoom.

Despite Zoom painting and sketching seeming incongruous, it worked very well. We were free to enjoy painting or drawing our own choice of picture or we

all painted a topic previously chosen. It was refreshing to see our friends and to chat for a while, then we worked in a comfortable, companionable space, often quiet for long periods but also, we could each hear a brush being washed in a jar, or sound of pencil on paper, or paper/board being moved.

We also organised a virtual art workshop. Tutor and artist Nicky Stockley posted an online tutorial - which she sat in on, and was there to help with any questions. The topic was watercolour rocks, which Nicky demonstrated. She also provided a selection of photos we could choose from. People who were working on an image of their

own choice also found that Nicky's knowledge and tips helped. In another session we tried painting glass and crystal. This turned out to be quite a challenge as it requires practice to render the play of light and shadows. Future Zoom meetings are planned.

The club also sponsors young people studying the Arts. These include an artist studying at Bournemouth and Poole College (Ed Marriott), dancers at ballet schools in London (Verity Marlow and Ben Cockwell), an actress (Lois Fletcher), a singer (Miro Vosper) a violinist (Amelia Seaman) and a drummer (Joe Marlow). Despite schools and colleges being closed they have been able to continue their studies and practise with online teaching, using local venues for dancing, and singing and painting at home.

Talented children and students who wish to study in the Arts can apply before the end of August each year.

We always welcome new members and applications for the bursaries. For more information contact

Gina Marshall on 07434814384 or

isleofpurbeckartsclub@gmail.com.



A painting by bursary student Ed Marriott

Swanage Area Dementia Friendly Community



The Light's Still On

Jean Gibbs the stalwart woman who helped set up the SADF some years ago, has a message for our communities in these dark times:

"Sadly, because of this terrifying Covid and lockdown, we have had to shut down our Singing group at Emmanuel, our Art Group at Herston Hall, our 'Reminiscence Group' at Swanage Library.

"However, our '**Buddy Group**' is still going strong and we are still helping as many as possible with uplifting advice and listening on the phone - which means that people can get in contact whenever they need a chat in these lonely times.

"My number is **01929 425521** - please ring anytime."

If you think you or your organisation has something to offer or something to say to **WellBeing Swanage** please get in touch.

Please include: what you or your organisation is providing and your contact details.

Please send in your details to our editor:

Gerry Norris - email melvyn.norris@icloud.com or (Tel: 01929 426127)



WHO ARE WE?

Planet Purbeck is a movement that gathers together individuals, groups and organisations who understand that climate change and biodiversity loss jeopardise everything we hold dear – and want to do something about it.

We recognise that our combined drive, passion, skills and experience can exert more influence than acting alone. Our coordinated actions aim not just to preserve our natural heritage but to regenerate it. We will campaign for causes that reflect our core values. We will fight to ensure progress in the climate emergency that faces us all. We will battle to improve the environment that surrounds us. And we will build resilience so we may weather the crises that lay ahead and protect future generations.

We're working hard to build a network of people who can make all this happen.

We host popular open meetings that inspire those who attend to engage with us and to join action groups. Our lobby team is working with Dorset Council and other local authorities to advance their carbon-zero strategies. Our events team is planning a free, family-friendly festival of music, food and stalls that will resonate with the natural world around us. Our legal team maintains our good name and our media team promotes our actions and aims.

New groups are currently being set up in land use and eco-tourism, and we expect many more to be created during 2021.

We stand with anyone who is ready to take action to protect and improve the community, landscape and wildlife here on the wonderful Purbeck peninsula.

Join us to make a positive difference to our future and the future of our children and grandchildren. Feel the empowerment of working together to make a difference and enjoy having fun while doing it. Everyone is welcome, whether you can offer skills and experience – or just want to be part of our mission.

Visit: www.planetpurbeck.org



Dean Storer, Planet Purbeck Media Team

M: 07532213188

Regular working hours Mon, Tue, Wed, Fri 9am to 12 noon.

Continue the ban on the use of Neonicotinoids:

<https://petition.parliament.uk/petitions/563943&subject=Petition>

STRONGER TOGETHER



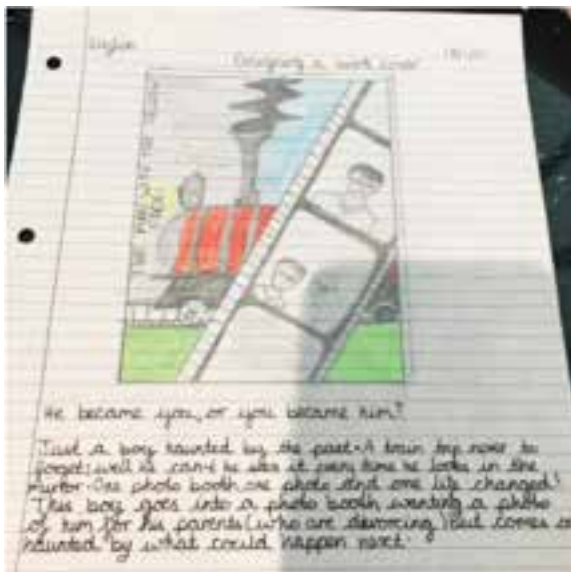
The Purbeck School
Achieving Excellence Together



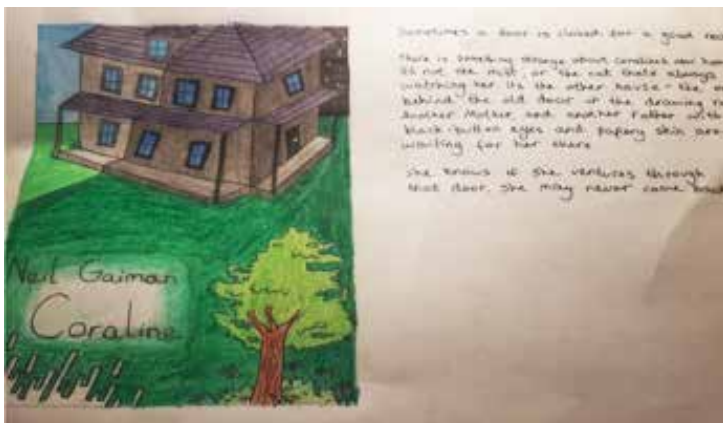
Continuing to achieve excellence at The Purbeck School

Despite the unusual nature of online lessons, students at Purbeck are continuing to work with diligence and care to produce some truly outstanding work. We would like to congratulate our students on their continued aspiration and perseverance. Here we have compiled a few examples of particularly attractive learning:

ENGLISH

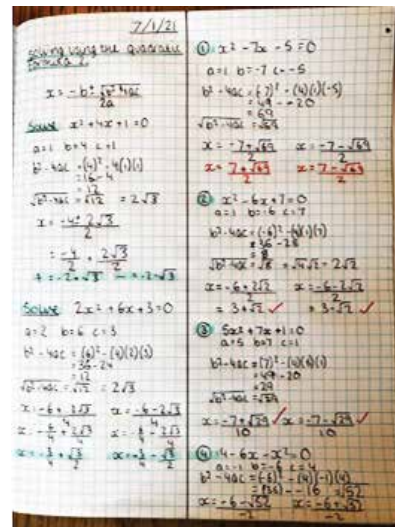


Book Cover design for 'The Man with the Yellow Face' by Evie Loudoun, Year 7



Book cover design for 'Coraline' by Amelia Malla, Year 7

MATHS



Year 11 Maddison Ford has adapted so well to working from home and despite all the setbacks she has shown tremendous resilience in consistently producing outstanding work in Maths.

FOOD TECHNOLOGY



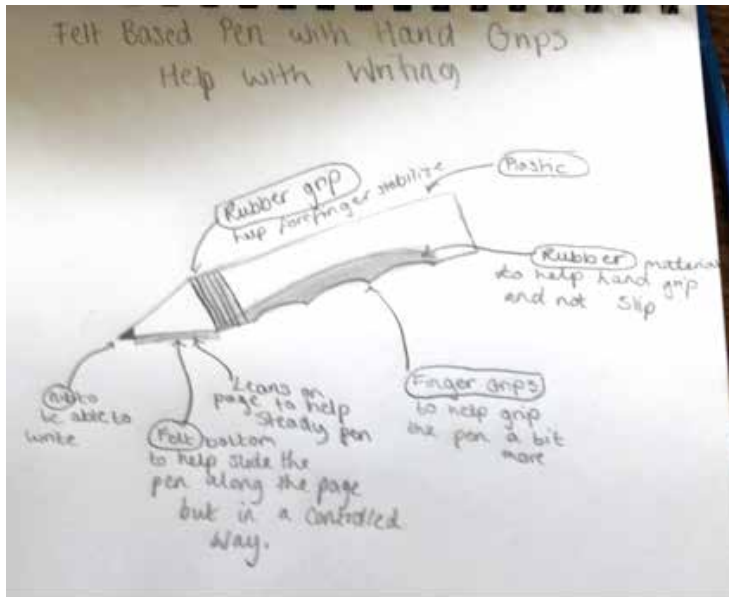
Riley Spoor in Year 8 planned this three-course menu all by himself, then prepared and cooked it all, presenting it to the delight of his family. His menu consisted of: spicy Caribbean chicken wings; Caribbean chicken curry and rice; a dessert of Caribbean coconut and mango cake. Masterchef!



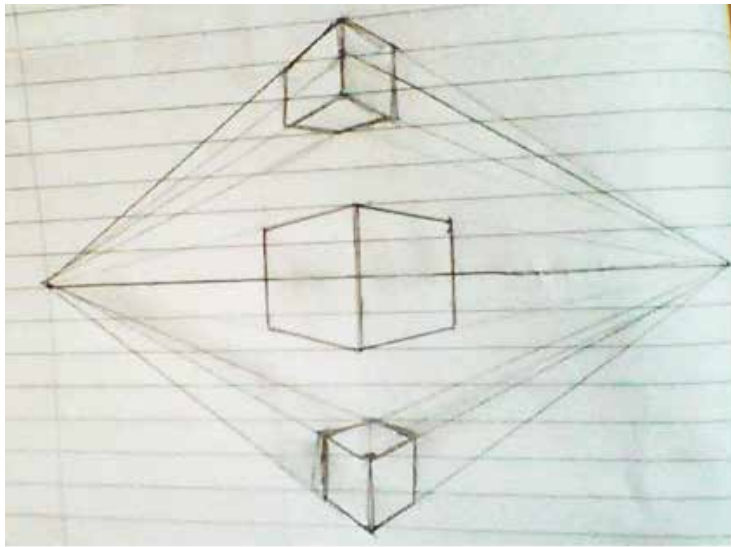
The Purbeck School

Achieving Excellence Together

DESIGN TECHNOLOGY



Year 9 Blossom has designed a product for someone with poor grip / shaky hands.



Emily in Year 9 produced this very careful and accurate two-point perspective in Product Design.



Yana Kelly in Year 7 created this outstanding piece of digital art in response to Michael Craig-Martin. Students were given the option to respond in any materials that were available to them. This is just one example of some outstanding work from KS3 students.





Situated at the start of Dorset's World Heritage Jurassic Coast, Swanage Pier is part of the town's unique Victorian history.

Looking back at last year, the Pier reopened on Saturday 4th July, after being closed during the first Coronavirus lockdown, with all the necessary measures in place to ensure the safety of volunteers, staff and visitors. It was great to welcome everyone back, either to enjoy a return boat trip to Poole, fishing, diving or just a breath of fresh air and great views from the end of the Pier.

On Friday 2nd October, Storm Alex brought heavy rain and high winds, with waves coming over the lower deck of the Pier causing some damage to the lower landing stage.

With the second lockdown, the decision was made to close for the safety of our volunteers. The Pier Master and a small team of volunteers spent this time carrying out general maintenance to the Pier and Marine Villas, which included painting the Café and Museum and some of the 44 benches and repair work was carried out on the lower deck of the Pier.

Along with the storm damage, the Pier has suffered an estimated loss of £40,000 of vital income last year, due to Coronavirus. Entering another lockdown, with the Pier closed for a third time and considering the ongoing situation, we do not know at this point when we will re-open, which makes your support vital to the future of the Pier.

To find out how you can support and donate to Swanage Pier please visit:

<https://www.swanagepiertrust.com/support-us>



The Mowlem

Theatre, Cinema & Function Rooms

The Mowlem is changing and this is your opportunity to shape our future

You may have noticed that the Mowlem has been changing. One of those changes has been the introduction of a number of new Trustees, bringing a fresh approach to the policy and aspirations of the Trust. As part of that process the Trustees are very keen to know how the community of Swanage and its visitors; young and old; performers and customers; those who currently use the facility and those who don't, feel about all aspects of the facility, the programme, the building, the friendliness and also who our customers are or might be.

In order to do this, we have produced a questionnaire which we are asking as many people to complete as possible. The survey shouldn't take more than 15 minutes of your time and we are really keen that you participate and complete it for us.

It is the wish of the Trustees to reflect and contribute to the community by shaping a venue that responds to your needs and wishes. This is your opportunity to shape the future of the Mowlem, please help us to do that by completing this questionnaire.

In addition, we would particularly request that you circulate the questionnaire link to your friends, members and, in the case of schools to children, staff and parents.

Please help us to reflect the needs and wishes of our community by completing this questionnaire.

<https://www.surveymonkey.co.uk/r/TheMowlemCommunityConsultationSurvey2021>

For those people who cannot access the questionnaire through the internet or social media then we can arrange to help if you [telephone us on 07899 813326](tel:07899813326)

The closing date for receiving your contributions will be **Sunday, 7th March**



The Purbeck Gazette, our independent and brilliant monthly community paper, has been suffering dreadfully since Covid appeared last year; as have so many of our local businesses and organisations. **Nico Johnson**, the editor, has been with us for many years now and in normal times, over 20,000 copies were distributed every month; from Swanage to Dorchester, from Lulworth to Bere Regis. The communities really love this publication. The excellent online version has been available during this pandemic, including the February 2021 issue, which is up online as we write, with the March edition being prepared now. As we find ourselves immersed in the third lockdown due to Covid, Nico and Kay have a message for all their Advertisers and Contributors - and for the rest of our communities:

"Dear Advertisers & Contributors,

Due to the latest lockdown and after discussing the situation with our advertisers – most of whom are now closed for business – we are continuing to publish online only during this most recent lockdown. During the first full lockdown, we averaged 70,000 readers online each month, so we know your words and adverts will still be read by a significant audience. Those with advertising runs already booked in will NOT be charged for running their booked advertising within this edition. If this is you, please do send in your updated advert (if relevant) and it will be included in the March edition. Everyone with an advertising run already booked will have the months we do not print on paper added to their existing run, so no money lost.

If you wish to book advertising for the **APRIL** edition, (deadline is noon **MONDAY 15th MARCH**) please do email either kay@purbeckgazette.co.uk or ed@purbeckgazette.co.uk

In the meantime, stay in touch, stay safe, try not to worry and we'll all remain standing when we come out the other side – again!"

Nico & Kay
PURBECK GAZETTE



**SWANAGE
LIBRARY**

SWANAGE LIBRARY UPDATE FEBRUARY 2021

Whilst we are closed to the public, you can still get books using our **'Order and Collect' Service** **Telephone 01305 228400** to place an order or visit **Dorset libraries order and collect** (dorsetcouncil.gov.uk). We will pick up to 10 titles for you based on your preferences and then contact you to arrange collection.

Our reservation service is also still available via **LibrariesWest** and once the books you have ordered arrive, we will contact you to arrange a collection slot.

We also have lots to offer via Dorset Libraries website, including links to our online events and digital resources such as magazines, comics and e-books. If you use social media, please like and follow our Swanage Library Friends page on Facebook and Twitter. We post every week on a wide variety of topics and would love you to interact with us via these posts.

Take care and we hope to see you very soon.
All the team at Swanage Library.





Thanks to the Covid-19 pandemic, the past year has been the biggest challenge that the rebuilt Swanage Railway has faced in its 45 year history.

Plans are currently being drawn up for when the Government says that our heritage line can re-open in a Covid-safe manner and, as in 2020, the health and safety of our passengers and staff is our top priority.

Thanks to detailed health and safety planning work – and the dedication of our staff and volunteers – we were able to operate Covid-safe pre-booked and allocated seating trains between July and October, 2020; albeit only being able to offer half the normal seats because of the need to maintain social distancing.

The end of June, 2020, saw the Swanage Railway awarded the 'We're Good to Go' certification by Visit England for meeting the required level of compliance with its Covid-19 preparations and precautions ahead of re-opening.

In December, we were able to run our first ever Covid-safe Steam and Lights trains which replaced the usual festive Santa Special trains with, again, the health and safety of our passengers and staff being our top priority. The public response was tremendous and surpassed our expectations and we had to add extra days to try and fulfil public demand. A new Steam and Lights service will be running later this year.

As in previous Covid-19 lockdowns, only essential care and maintenance work has been taking place on the Swanage Railway since Monday, 4 January, 2021. There have also been inspection trains and regular security patrols along almost ten miles of line – from Swanage to just short of Worgret Junction, west of Wareham, on the London to Weymouth main line.

Last Autumn saw the Swanage Railway improve and refresh its website at www.swanagerailway.co.uk. You can register to receive our free email newsletter receive updates, operating days, train services and train times, and access our on-line shop.

Dedicated Swanage Railway Trust volunteers are working hard to raise funds towards our £360,000 'Save Our Service' appeal launched in March, 2020.

The public can easily donate by phone to our '**Save Our Service**' appeal by texting 'SOS' to 70470 to donate £10 which costs £10 plus a standard rate message or other amounts between £1 and £20. Cheques can also be sent, clearly marked "Save Our Service" appeal, to the Swanage Railway Trust at Station House, Station Approach, Swanage, Dorset, BH19 1HB. To make a donation by PayPal and other Fast Payment internet banking methods visit www.saveourservice.uk or via the Railway's Facebook page.

The Swanage Railway also always welcomes new volunteers. There are opportunities in many different areas of our operation. For a chat please contact Swanage Railway volunteer co-ordinator Mike Whitwam on 01929 475212 or email iwanttovolunteer@swanagerailway.co.uk.

Thank you for your interest and support for the railway which is very much appreciated. I look forward to welcoming you back on our trains again before too long.

**Steve Williams,
Volunteer Trustee and Commercial
Director,
Swanage Railway**



Line Inspection Train - Photo by Andrew P.M. Wright



COMMUNICARE TRANSPORT TO COVID VACCINATION APPOINTMENTS

COMMUNICARE would now like to update their information regarding the **“Transport to Covid Vaccination Appointments”** in the January Newsletter. Director, Jenny Lazenbury said:

‘We have had an amazing, if somewhat overwhelming response from the public, and where possible have been delighted to help. So, to simplify matters, we would like to inform people that they can ring any of the following numbers and, if necessary, leave messages on the ansaphone. You should leave your name, telephone number and the date and time of your vaccination. That person will then ring you back.

*“Please note that Communicare’s Vaccination Transport is only able to serve people who live in the **Swanage area**. We do have to make a charge for this service so If you live in the Wareham area, then please contact the Wareham Disabled Club, Wareham Lions Club, or Wareham Hopper – details as given in the January Newsletter. “*

COMMUNICARE TEL NUMBERS: FOR SWANAGE AREA PEOPLE ONLY

01929 427576

01929 480932

01929 427346

01929 288177

01929 477114

01929 426644

07531 811375

NOTE: For a return journey we charge 40p a mile to cover our petrol costs only
(between £8 - £10)



Swanage Connect Services

As we continue with another Coronavirus lockdown the staff at Swanage Connect and the Day Centres in Wareham continue to work with vulnerable and isolated people in the community.

In our role as the ‘community response team’ staff from Swanage and Wareham Day Centres continue to offer help and support to clients and their families within the community and work tirelessly to ensure support is given.

We continue with visits at home. This gives people the opportunity to have some company and a chat and their carers some much needed respite and time to themselves. Often the person will talk about their memories and their families and enjoy reminiscing about the past.

Some like to get out in the fresh air and have a walk and others are content to remain at home doing craft activities or playing games.

We have a zoom session set up Monday to Friday, this offers the chance for people to see their friends and join in quizzes and activities online, dance, chair Zumba, baking and much more. This has brought a great deal of pleasure to those that join in and has lifted their spirits. For those that struggle to join the zoom our community team will help and assist with the set-up and make sure the person involved is able to access the session.

We support people with making meals and ensure they are eating and drinking, keeping an eye on their health and wellbeing, and making sure they have enough food and supplies in the home.

Our work alongside Purbeck Local Office continues and we meet regularly ensuring there is continuity of care for all the people that we visit.

Staff in the Day Centres continue to embrace their role as community support and the challenges this can sometimes present. Our work is appreciated by the people we visit, and the rewards are apparent when we see the pleasure it brings to the isolated and vulnerable and the gratitude of carers for their time to themselves and the thanks we receive.

The staff remain committed to their role both in the community and the Day Centre and are a credit to the Tricuro team.

People First Dorset

People First Dorset have a full schedule of free events on Zoom open to adults with a learning disability living in the Dorset area. Groups include Friendship Club, fitness and 'Speaking Up' meetings.

Friendship Club is a weekly group, great for making friends and having fun doing quizzes, games and crafts. Our fitness sessions help support members to get active and include exercise to music, yoga and wellbeing workshops.

Speaking Up groups are monthly online meetings taking place for 6 different areas of Dorset.

Members can gain confidence by Speaking Up about things that matter to them and that are local to their area. Topics covered are health, independent living, keeping safe, transport, relationships and much more!

People First Dorset also do a weekly 'Connect' newsletter with useful information to help people understand the government updates and the impact of coronavirus on people with a learning disability. It includes lots of ideas of things to do, like relaxation exercises, puzzles, poems and recipes. See all the issues so far here: <https://www.peoplefirstdorset.org.uk/resources>.

If you are interested in this, ring 01305 257600 or email: office@peoplefirstdorset.org.uk

SOCIAL MEDIA

- Facebook - @Peoplefirstdor
- Twitter - @Peoplefirstdor
- Instagram - @peoplefirstdorset
- YouTube - People First Dorset
- Website: www.peoplefirstdorset.org.uk



Purbeck

Need Advice?

Purbeck Citizens Advice is Here to Help when You Need To Find A Way Forward

We provide free, independent and confidential advice and information whatever your question.

Advisers are available 5 days a week to give advice on the phone or by email.

We offer a full range of up to date advice, including help with:

- Benefits entitlement and claims
- Debt management, budgeting and income maximisation
- Employment advice including furlough, Statutory Sick Pay and rights when laid off work
- Advice for the self employed including the Income Support Scheme
- Energy and water advice, support and schemes including helping you to Check, Switch and Save on your energy bills as part of Big Energy Saving Winter
- Housing and advice if at risk of homelessness
- Referrals for charitable support or to food banks

Purbeck residents needing advice can phone Dorset Adviceline on our new freephone line 0800 144 8848 (Textphone: 0800 144 8884), 10am-4pm weekdays to talk to an adviser.

Alternatively, you can use our webform at www.purbeckadvice.org.uk for email or telephone call-back, and access a wealth of self-help advice online at www.citizensadvice.org.uk

For details of Winter Support for local residents who may be struggling financially due to Covid-19, visit <http://purbeckadvice.org.uk/winter-support.html>

For more information about how to save money on your energy bills visit www.bigenergysavingwinter.org.uk or email energyadvice@cabnet.org.uk



Singer Rossano Sal

Some Enchanted Singing - to lift your spirits in Lockdown

Sensational tenor, Rossano Sal, has been bringing a little joy into many lives of isolated people of all ages, stuck at home in lockdown.

Rossano says: *"As a singer in the south west of England, I have decided to start my journey on Youtube (and Facebook) as I would usually be singing live to audiences around the UK. I thought I would give you all some entertainment from the comfort of your home and also let you get to know me."*

"I post content on my channel three days a week Mondays, Wednesdays and Friday's. In this tenth episode here, is my cover of 'Some Enchanted Evening' from 1949 South Pacific by Rodgers and Hammerstein."

"Do hope you enjoy this experience and if you do, please 'like', subscribe, share and comment to show your support. It would mean a lot. Thank you. Remember hit the bell to be notified of new content!"

Facebook: <https://www.facebook.com/RossanoSal>

Website; <http://www.rossano-sal.com> Instagram

@Rossanosal https://youtu.be/5a_JKDc-LYI

Rossano's Lockdown cover songs include an amazing variety:

The Drifters 'Under The Boardwalk', 1964; The Drifters 'Saturday Night At The Movies' 60s; Diana Ross 'When You Tell Me That You Love Me' 1991; Sting 'Fields of Gold'; Musical Theatre 'Maria' from West Side Story, Musical Theatre Les Miserables 'I Dreamed A Dream' and much more...

Pat Wilkins, Carers' Development Lead at Dorset HealthCare NHS University Foundation Trust said:

"Something lovely to listen to while working. Rossano sang for our lovely carers across Dorset Carers Week. He has started to sing every week through lockdown and it always gives me a lift and goose bumps, hence why I'm sharing with you."

ENJOY! Feel free to share and spread the love.



In these strange times, even though most of our church buildings are closed, the Churches in Swanage are still very much 'open'! A variety of worship resources and services are available. Each church website will provide you with details – find contact details on swanagechurches.org.

SWANAGE & STUDLAND TEAM MINISTRY (C of E)

All Saints' and St Nicholas' church buildings remain open for private prayer each day.

St Mark's is open on Sundays and Wednesdays only, but all actual services in these three churches will be cancelled.

St Mary's is open daily from 9am to 4pm for private prayer. Due to its size, it's a safe place to continue actual church services, but they are curtailed and measures to underline the importance of social distancing are insisted on and will be further monitored. Holy Communion is celebrated each Sunday at 8.00am and 10.30am and Morning Prayer held Monday to Saturday at 8.00am.

A simple Sunday service continues to be prepared for the Swanage Team Ministry website every week, for those unable to get to Church physically. This service, being one to be read at home, is also being posted out to those who wish to receive it in printed form. Please let the Parish Office know if you would like to be sent a copy: **ring 01929 421117** and leave a message if there is no answer. Swanage Team Ministry website. www.swanageteam.com

ON LINE SERVICES

All Saints' 10.30am weekly Sunday service is available on line. Simply go to All Saints' website and follow the links, at 10.30am any Sunday, and any time after. Website at: www.allsaints-swanage.org

St Mark's has a YouTube service at 10.00 a.m. each Sunday and available afterwards via the team website. Go to the home page, scroll down to St Mark's and click on it. You will find the link to the service on that page.

St Nicholas', Studland, holds a service which anyone can join via Zoom at 10.00am and at 6.30pm every Sunday. To join the zoom services, please email Tony to request the link for each Sunday. revtonyhiggins@btinternet.com

Rotary

Swanage and Purbeck



Like many others, our plans for Christmas were severely disrupted though we still managed to provide a range of festive delights whilst raising much needed funds for local good causes. Santa's Sleigh, a pop-up Christmas shop and our Charity Mail service together raised nearly £10,000.

In addition to our fundraising efforts we helped the Friendly Food Club by funding and preparing 50 food bags with the ingredients to make a Yule Log and personally delivered Christmas stockings to 36 Swanage residents spending Christmas Day on their own. We also sent nearly 300 boxes of gifts to children abroad plus a number of boxes of new toys to children in family refuges in Dorset and Hampshire.

Looking ahead we will be supporting the Swanage Stroke Club and The Besom as our chosen charities this year. In addition we hope to be working closely with other local organisations including the Carnival Committee, the Swanage and Purbeck Development Trust, the Swanage Covid Resilience Group and Crazy4Corfe.

Our Rotarians currently number 35 men and women from all walks of life. A thriving membership is the key to our group being able to continue to do what it does, and we welcome anyone who would like to get involved.

Email us at:

secretary@swanagerotary.org or visit our website <https://www.swanagerotary.org/> to find out more.

Deirdre Selwyn

President, Swanage and Purbeck Rotary

Swanage Food Bank



Swanage Food Bank is here to serve

Swanage Food Bank continues to be very busy in this third lockdown, so are grateful for the wonderful support of many in the community. Our appeal for empty egg boxes has met with such a huge response that we are no longer in need of more.

As always, we share on our Facebook page and on various Swanage Facebook groups, any food shortages which people might like to donate in various bins around the town.

As part of our Covid-19 Policy, we continue to use our dedicated Home Deliveries Team, a member of which recently reported back:

'... Every single delivery that I have made has been received with quite overwhelming gratitude and it is often obvious that this not only provides a lifeline to many people but is also a ray of light in what must often seem to be relentless gloom.'

We provide 7 days of food supplies (including fresh veg, fruit and dairy products) for all those who are struggling to afford adequate food and who self-refer, as well as for clients referred by various care agencies.

We are simply a phone call away on **07759230313** (Enquiries and other matters may be dealt with by ringing our admin. line : **07713637208**).

Swanage Food Bank is here to serve.



SNIPPETS FROM STUDLAND



STUDLAND PARISH COUNCIL

Later in the year, expect to see new fingerposts at the crossroad opposite the village stores, the triangle at the top of Beach Road and at Currendon Bottom. These heritage features are found throughout Dorset and are thought to have originated, in part, with the creation of Dorset Council in the 1890s; hence the London Tube-type features found with the roundels. All signs will have six figure map references. (*Corfe Castle Parish Council - a repair needed for the fingerpost at Rempstone?*).

The flooded village pond may be a project for the Studland Parish Council to manage in the future. Will any planned Beavers for Little Sea do anything for already clear water or just be an exercise in public relations? Studland has several non-listed heritage assets e.g flint and heath stone walls, Victorian Kissing Gates, the old cart shed, bollards on Windmill Lane - worthy of recording in a heritage survey?

Bournemouth Beach sand recharge: something for Studland, given that the extensive erosion has moved the asset of the beach offshore by 50 to 100 metres due to scouring- something for the Dorset Local Plan policy on coastal processes?

Are villages like Studland sustainable post CV19 pandemic? High numbers of second homes, an aged population, few jobs (mostly low paid) little investment by local businesses in the community? Plenty for the Parish Council to get on with maybe within a Neighbourhood Plan?

THE PURBECK SOCIETY

Publication of the non-listed heritage assets survey is very near completion. This will be shared with the community and used to inform Swanage Town Council as there is interest in extending this work given the state of the local Conservation Areas. A return to the programme of meetings is being planned for later in the year subject to safe conditions being present post CV19 pandemic. The Purbeck Society has concerns over the proposed possible changes to permitted development rights including the conversion of retail premises. Any removal of public engagement via planning functions is unwelcome. The Dorset Local Plan consultation raises issues of heritage assets where it appears that housing numbers trump both heritage and environmental assets. Something to lobby your Dorset Council ward member? See www.purbeckociety.co.uk

Members of the Purbeck Society have access to the Civic Voice Network. Their next webinar is on the 17th of March. Have a look at their website: www.civicvoice.org.uk

DORSET CPRE

The Purbeck Local Plan. An objection to the proposed 100 holiday home park in the Green Belt and an internationally protected area has been sent to the Inspector who is now concluding this plan process. The near-hidden proposal is quite shocking given the nature of the area - close to the recent heathland fires. A concern with this proposal is the creation of a SANG (site for alternative natural green space) - a bizarre and disaster driven idea to put a green space onto an existing green space.

For more info go to: <https://dorset-cpre.org.uk>

The public consultation of the Dorset Local Plan ends middle of March - and is a major concern.

The drive for 39,000 extra houses across Dorset by 2038 will transform and urbanise Dorset. The Dorset Local Plan appears to be driven by a desire to have a 5 year land supply as required by central government and its inspectors. Dorset has an opportunity for alternative approaches recognising the importance of the constraints of the local environment and heritage - both of which are huge assets for Dorset. Evidence supporting the Local Plan is out of date, eg, workplace surveys, and set in pre-Covid pandemic times.

What a strange approach when so much has changed since March 2020?. The recent Dasgupta review outlining the needs to address the rapidly growing ecological emergency, is not addressed in the proposals. There appears to be little in the way of dealing with the demand for affordable homes and the growth of second homes, both of which will impact on the local labour supply. Capacity management of popular tourist locations is not adequately covered - strange given the example of Durdle Door in 2020.

The absence of any significant economic analysis drives a coach and horses through the proposed plan. Dorset CPRE argue for withdrawing and updating this proposed plan and replacing it with up -to-date evidence; a shared vision created by the residents of Dorset; a local housing numbers method and adequate protection for the assets of the environment and heritage in Dorset.

Dorset CPRE also support **STAND** the group arguing against the development of more than 3,500 houses north of Dorchester. Hardly much Hardy Country left if this site goes ahead. For more info go to <https://stand-dorchester.net>

Plenty for readers to respond to in the Dorset Local Plan. Please take the opportunity to respond to this very important consultation and take a look at the Dorset CPRE website for updates and opportunities for support. For more info go to: <https://dorset-cpre.org.uk>



At the beginning of February the Zoom meeting for 'Aquarius' members (the women's club based in Corfe Castle) was a very useful session on improving our skills at using a computer and sorting out some of the common glitches. Several members were joined by their partners also eager to increase their proficiency! We also included some uplifting photos of spring beginning to emerge, taken by some members in their gardens or on their walks. This raised our hopes that change was on the horizon! We intend to continue this activity over the next few months to lift everyone's spirits.

The Committee has continued the regular phone calls to members to check on their well being and with many members having now experienced their first anti Covid-19 vaccination, hopefully the general situation will continue to improve. As far as I am aware the process has been fairly easy and well managed although there have been instances of double booking which has necessitated some folk to travel to Bournemouth for their jabs, but that has not been many.

Some members have continued their assistance at the Wareham Hospital vaccine hub.

As to our satellite groups; one Book Group has been held again on Zoom and the Sewing Group has continued to spearhead our Community Project, making Twiddle Blankets for people with dementia. We would very much like it if most members were able to make something, either sewn, knitted or crocheted so that the metre square blankets would be fully representational of the whole membership! We also hope that when we can come together as a group we may be able to have an afternoon putting these together in interesting and useful designs.

March 2nd will see our Annual AGM. It will be a very different affair this year being managed with Zoom. Unfortunately, this will exclude a few people but we aim to get the documentation out to everyone beforehand so that they have the opportunity to contribute and vote as appropriate. We will also include a lighthearted Charades activity - for a bit of fun.

We are planning future activities 3 months at a time rather than a year long programme to just keep abreast of the present situation. Hopefully after the first 3 months we might be able to look further ahead with optimism!

We always are happy for occasional guests to our meetings so just use the telephone contact number below if wishing to join at any time.

Christine Kemp (Aquarius Joint Chair)
Tel: 01929 480007



It's getting lighter in the evenings

Tracey Churcher, General Manager of the National Trust in Purbeck writes:

This - I hope - is a metaphor for the times to come this year. I joined the National Trust as General Manager for Purbeck in January last year and as you can imagine, it has not been a year I could have anticipated.

However, I am not going to focus on the tough times today. Swanage is having enough of those right now and our thoughts and sympathies go out to all affected by them and that includes our staff, who have not remained untouched. I want instead to focus on the positives that have come out of this extraordinary year for our work locally.

Firstly; we have learned lots about being closer to the communities we are part of and how we can use the assets we have to help achieve community ambitions for a more sustainable Purbeck. The last year has shown how important it is to be able to access nature on your doorstep. Whilst we are fortunate to be surrounded by some magnificent landscape, having a shared piece of land where people can have personal connection, is clearly something really positive for mental wellbeing and community connections. With projects either starting or underway in Swanage (through Sustainable Swanage), Langton, Corfe and Studland, this gives us all something to look forward to this coming year.

The range of people coming forward to work on these projects has also been really uplifting. It is clear that access to nature resonates in all sections of the community and the sharing of ideas, ambitions and experience has been great.

Secondly; the huge numbers of summer visitors last year has made it very clear to all those who work in the tourism economy, that we need to be more joined-up in our response to this. We are so lucky to live in a place which so many people want to visit, but managing the busy times can be full on and tricky. Whilst the summer visitors are great for the economy, we also need to reach out to ensure that they have a good understanding of how they can enjoy their time here, whilst still respecting the local communities and environment. As you may expect, this is a work in progress, but at least the various agencies are working in a far more joined-up fashion to help improve this.

From our viewpoint, we are working on our nature connections and how we can develop and share these with visitors to encourage understanding and respect of our area, as well as enjoyment of it for more than just the intense summer holiday period. It certainly is helping us all get through the here and now. Hope you all have positive future plans as well.

If you would like to get involved in any of our projects drop Tom, our Engagement Officer a line at tom.clarke@nationaltrust.org.uk

Young Onset Dementia Carers Group

This group was started in 2017 and meets bi-monthly, on a Saturday afternoon at Haymoor Day Hospital on the Alderney Hospital site, Poole. It is open to any carer, caring for someone who has been diagnosed with a Young Onset Dementia and aged under 65.

At the present time, because of Covid and the national lockdown, we cannot, of course, meet face-to-face but we are using 'GoToMeetings' to meet virtually until things change.

This is an informal group and we have talked about:

- Clinical issues, including the difficulties of diagnosis
- Symptoms, progression and genetics
- Impact on families and coping strategies
- Benefits, finance and legal aspects of caring
- Services available including Social Services support, carers support
- How to re-engage with services if situations change
- Food and nutrition
- Assistive technology
- Local groups and
- Supporting the person with dementia in coming to terms with their diagnosis.

We will invite guest speakers at the request of the Group.

We also have a closed Facebook Group to disseminate information and advertise upcoming events.

Any carer can refer themselves or be referred by calling Sue Mitchell on **01202 705568** or email; sue.mitchell1@nhs.net. Sue will also give you any other information you require.



Swanage & Wareham Depression Support Group

Who Are We?

We are a group of local people in our communities who experience depression or anxiety.

We are not experts, but we know how it feels. At this terrible time with Covid and Lockdown we cannot meet face-to-face at the moment, but we find that a problem shared, is a problem halved.

Weekly Zoom Meetings

Swanage & Wareham Depression Support Group meet weekly, on WEDNESDAYS at 7.00PM.

For those of you who have never used this new way of communicating in these lonely and isolated times, please do not be put off. We can easily set you up with a link through your email address.

You will be very welcome.

Contact us with confidence

To get in touch please contact Nick on nickviney@hotmail.com

Or to find out more please call Nick on **01929 439121** or Mary on **01929 426896**

REMEMBER: THERE'S LIGHT AT THE END OF THE TUNNEL

You are invited to the Story2Remember online event

Using Drama and Storytelling in Dementia Care

At the event: We will be presenting the results of the Story2Remember project (<https://www.bournemouth.ac.uk/research/projects/story-2-remember>).

There will be a range of speakers talking about the different outputs of the project, including a health care professional who trialled the training programme and will talk about their experience.

Date

17th February 2021

Time

14:00 to 17:30

Register at

<https://story2remember2021.eventbrite.co.uk>

Any questions?

jonesc@bournemouth.ac.uk





ALCOHOLICS ANONYMOUS® is a fellowship of men and women who share their experience, strength and hope with each other that they may solve their common problem and help others to recover from alcoholism. ... Our primary purpose is to stay sober and help other **alcoholics** to achieve sobriety.

This is a very unusual time. It is stressful for many people in many new ways. Some people turn to alcohol to help them cope and get through it. This can be more of a danger than a help to some of us. If you think you have a problem with alcohol we can help:

IF DRINK IS COSTING YOU MORE THAN MONEY
then we can help you. Please telephone our free Helpline today:

0800 917 7650



Photograph by Robert Field



**DOMESTIC ABUSE
CAN
AFFECT ANYONE**

WE ARE HERE TO HELP:

YOU FIRST (Dorset Council)

0800 032 5204

OUTREACH (POOLE-BOURNEMOUTH)

01202 710 777

WOMEN'S AID

email – helpline@womensaid.org.uk

**24HR NATIONAL DOMESTIC ABUSE -
HELPLINE 0808 2000 247**

DORSET POLICE in an emergency **CALL 999**
or go to

www.dorset.police.uk/abuse-help

LOCAL SHOPS, RESTAURANTS, AND BUSINESSES SAY: "WE'RE STILL HERE FOR YOU"

Because we are now in National Lockdown 3, these and many other shops, and businesses etc, are open under government's stiffer rules, Some are continuing to offer special services, allowing residents to phone with their orders, pay over phone, and then either collect at an agreed time and in some cases, Free Delivery is still offered

So, still worth trying those listed below, if you require their help

BALLARD DOWN STORES - 10 Redcliffe Rd, North Swanage - Fresh fruit/veg - newsagents, drinks, frozen foods - much more

BUDGENS SUPERMARKET Station Rd - baked, fresh, packaged goods **01929 422478**
(order by phone, pay over phone, can be picked up from store with assistance)

BURT'S BITS, 11 Station Rd, Swanage - Household goods and much more

CHOCOCO - chocolates and sweet treats **01929 408288**

COSTCUTTERS - 208 High St, Swanage - Fresh fruit/veg, butchers, frozen goods, general store, newsagents and much more

COUNTRY FOODS, 37 Station Rd - Shop open Mon-Sat 9am-4pm. **07789 289289**
THURS ONLY FREE DELIVERY (Orders over £25) to Swanage area only

COURT HILL STORES - Ordering & accept payment for goods on phone **01929 424796**

FOLEYS GARAGE SPAR SHOP HX - Grocery Orders taken 10am-12noon **FREE DELIVERY**
to: HX, Corfe, Langton, Kingston, Swanage, Studland **01929 480097 to order**

MASALA INDIAN CUISINE - Indian takeaway offering delivery website **01929 427299**
www.masalaswanage.co.uk

McCOLLS - 6 Institute Rd, Swanage - Newsagents, food, and much more

JJ MOORES BUTCHERS - Meat, frozen ready meals, fresh fruit & veg **01929 424891**

NIXONS HOME HARDWARE, - Station Rd, Swanage - DIY store - many goods

PET-LUV - Pet food, fish food, rabbit food, much more **FREE DELIVERY 01929 426227**

PURBECK VALET - Dry cleaners & launderette - collection/del.service **01929 424900**

THE SALT PIG - Butchers, ready meals, eggs, veg, fish (Tel: orders) **01929 423616**

WH SMITH 5 Station Rd, Swanage - Newsagents and much more

SWANAGE BAY FISH - Wet fish and shellfish **01929 422288**

SWANAGE NEWS 47 Station Rd - Newsagents, books, art+crafts, etc

SWANAGE & PURBECK TAXIS - **07969 927424**

(Pick up and deliver grocery orders - order and pay directly from supplier by phone then phone our taxi company)



SWANAGE COMMUNITY CORONAVIRUS INFORMATION WEBPAGE:
<https://www.swanage.gov.uk/Community-information.aspx>