

# SWANAGE AREA FORUM

INCLUDING SURROUNDING VILLAGES

## NEWSLETTER

JANUARY 2021 - No. 8



Entirely predictably, the third wave of the pandemic that we are now experiencing is expected to be worse than the first two waves. Compare pre-Christmas, areas such as Cornwall and The Isle of Wight: both have moved from Covid-19 tier one safer havens to Covid-19 hot spots within a few weeks. Dorset is similar with worrying rises in infection, I wonder why?

Could it be that the folk from the inland urban areas believed that they could have a more carefree Christmas holiday by the seaside? Could it be that the original message of a five day Christmas break (which was later belatedly changed to one day only) might have given the impression that we could travel around the country, visiting relatives and friends, so that we could have a smaller but normal holiday break?

The clear message right from the beginning is that the virus transfers faster in confined indoor areas and amongst crowds. I wonder how we arrived at this situation?

Let us look forward to a successful vaccination programme and better times ahead.

Stay safe and keep well

**Mel Norris,**  
**Chair Swanage Area Forum and Swanage & Purbeck Development Trustee**  
[melvyn.norris@icloud.com](mailto:melvyn.norris@icloud.com)



# The Swanage Medical Practice

## SWANAGE MEDICAL PRACTICE NEWS - JANUARY

After a tumultuous November and December, once again we find ourselves in another national lockdown, which seems likely to continue even longer than the first one in March 2020. The November lockdown had got us back to less than 5 active cases in Swanage at any one time. By 31st December 2020, this was between 10 and 20 cases, with a staggering jump to between 40 and 80 cases by 7th January 2021. If this continues to rise, this means that 1 in 100 are likely to be infected at any one time. Shockingly, we are now in the top half of the country by prevalence, rather than near the bottom as we were.

**Given the vulnerability with our older population, our care homes, and comorbidities, this means we all need to heed - and exceed - the current lockdown recommendations. Removing all opportunities for the virus to spread from one person to another, is the only short-term way of getting the rate down.**

Our local hospitals are becoming stretched, as in other areas of the country, with up to 200 cases now being monitored by the Covid Home Pulse Oximetry service (*the remote monitoring of patients with coronavirus symptoms*) at any time.

A rise over Christmas was expected, but when we came out of lockdown in December, the new variant had only just been described and its effect was difficult to predict. Studies have since shown that for the same level of lockdown, when previously each person only infected 0.7 others, this new variant infects 1.3. persons. It is that much more infectious but seems to cause the same degree of illness. So the measures that were suppressing it will no longer do so. The weather has also been cold which helps preserve the virus and forces us indoors and that may encourage further spread. It will be a long time until the hot weather in May or June may help suppress it again.

All the more reason why we all need to continue to practice “**Hands, Face and Space**” as well as staying at home. Those who were advised to shield last time should by now have received another letter asking them to do so again.

At the beginning of December vaccine started to be delivered and we arranged for the Practice to help with this. The original batches went to hospital sites and those areas with the combination of elderly patients and deprivation. Now those sites have been provided for, we finally heard on Friday the 8th January that Purbeck would be getting its first batch of 975 Pfizer doses and an unknown number of AstraZenica ones. Thanks to a Churchillian effort by the Purbeck Community Network and Practice receptionists, the most at risk of the over 80s have now been telephoned and booked in for their vaccination. This was only one-third of the over 80s. Unexpectedly we have now heard we will be getting further supplies from the 18th January, so those that missed out on this first batch should soon be contacted. Swanage Practice may be posting out pre-defined appointments.

**It would be most helpful if the community could help each other to keep the original slots given as we have limited slots to give out and resources to alter them. Once we have vaccinated all the over 80s, care home staff and residents and health care staff, we will be moving onto groups 3 and 4 (all those 75 years of age and over, and, all those 70 years of age and over and those who were classed clinically extremely vulnerable).**

With the additional strain of staff absences due to Covid, increased contacts due to the virus and now the booking and giving of the vaccine, Practice staff are now very busy. **So PLEASE do not call us to try and book a vaccine - or ask when you will get it - or why X had it but Y has not - or which vaccine you will get - as this will be preventing us booking people in or organising other care.**

I have visited the Vaccination Centre in Wareham and would like to take this opportunity to thank all those that have worked so amazingly hard to get us to this vital point of rolling the vaccine out to the Swanage and Purbeck residents.

**Remember: “HANDS (wash), FACE (mask), SPACE (2m)”**

Dr Jason Clark, Senior Partner  
Swanage Medical Practice website: [www.swanagemedical.org](http://www.swanagemedical.org)



# Covid cases soar as Wareham Hospital prepares for first vaccine clinic



Plans are well underway at Wareham Hospital to vaccinate the most vulnerable in Purbeck against Coronavirus. As we write on 10 January, it announced that the first clinic will be from Thursday 14th to Saturday 16th January 2021.

This encouraging news comes as the number of people in hospital in Dorset has dramatically risen, together with a rise in the number of cases across both the Dorset Council area and the Bournemouth, Christchurch and Poole Council area. As at 10th January, there were 272 Covid-19 patients in hospital beds in Dorset. This compares to 135 patients on 4th January. With the increase in patients at the Dorset County Hospital, Poole Hospital and the Royal Bournemouth Hospital, suitable NHS staff and others, are being trained up to help with the crisis and general wards are being turned into wards for Covid patients.

## Swanage numbers

In Swanage, the number of confirmed cases for the seven days up to 3rd January 2021 was 25, with the 7 day case rates per 100,000 being 254.7, which is the highest rate since the start of the pandemic. **Further information**

- Read the latest update on Covid-19 cases in Dorset on the Public Health Dorset website:

<https://www.publichealthdorset.org.uk/your-health/protecting-your-health/latest-updates-on-covid-19-in-dorset.aspx>

## Covid vaccine clinic at Wareham Hospital

The Purbeck Primary Care Network, which consists of Swanage Medical Practice, Corfe Castle Surgery, Wareham Surgery, Bere Regis Surgery, Sandford Surgery and The Wellbridge Practice, is organising the Covid vaccine clinics. It announced the welcome news:

*"We have finally received notification of the delivery of the first vaccines. We will be running a clinic from Thursday 14th to Saturday 16th January 2021. Due to capacity parameters and planning restrictions the vaccine will be offered to patients as directed by your GP practice who are working under strict government guidelines for prioritisation pathways.*

*"Further supplies of the vaccine will be arriving in due course and the vaccination programme will be a lengthy ongoing process. **It is very important that you do not phone your GP surgery to book an appointment, as they will contact you directly when the time comes to arrange a suitable time/date for you.***

*"We are all working around the clock to provide all Purbeck patients with the vaccine as soon as possible so please be patient with us whilst we organise your vaccine pathways."*

*The logistics of rolling out the vaccine has meant that there has been a campaign to recruit volunteers to help run the clinics with admin tasks and helping organise car parking. The Purbeck Primary Care Network says that it will publish a link on its Facebook page for volunteers to sign up for their preferred dates to help out at the clinics."*



## TRANSPORT TO COVID VACCINATION APPOINTMENTS

When you receive the invitation for your virus vaccination, there is now confirmed provision for transport in place **for those who need help travelling to their virus vaccine appointments - (particularly older or people with disabilities).**

But please only contact these organisations listed below, once you have received your vaccine invitation.

All the voluntary organisations listed here will have to make a small charge for the transport directly to you, the user of the service:

### COMMUNICARE

(voluntary car and befriending service in Purbeck)

CONTACT - Jenny Lazenby - Please phone: 01929 426644.

### SWANAGE DISABLED CLUB

CONTACT Robert or Sue Payne - Telephone 01929 423729

### WAREHAM DISABLED CLUB

CONTACT Brian Dashford - Telephone 01929 553419

### WAREHAM LIONS CLUB

CONTACT Colin Appleton - Telephone 01929 552110

### WAREHAM HOPPER - Dial a Ride.

CONTACT: Helen Reed - Telephone 01258 472164



There have now been three COVID-19 vaccines approved for use in the UK, the **Pfizer vaccine**, the **Oxford University/AstraZeneca vaccine** and the **Moderna vaccine**. All vaccines have been authorised by the Medicines and Healthcare products Regulatory Agency (MHRA) after meeting strict standards of safety, quality and effectiveness against coronavirus. We have put together a guide to explain in more detail about each of the vaccines.

### How effective are the vaccines?

The results show both the Pfizer and Moderna vaccine to be **up to 95%** effective against coronavirus and the Oxford/AstraZeneca vaccine to be **70% effective overall**. The studies also showed a strong immune response in older people for the Oxford vaccine.

### How are the vaccines given?

All three vaccines require patients to receive two doses by an injection given in the upper arm muscle. The second dose for the Pfizer vaccine was originally suggested to be given three weeks after the first dose, however has now been changed to up to 12 weeks. This is because the Government is prioritising giving the first dose to as many 'at risk' people as possible because having the first vaccine alone does provide some protection against coronavirus. The Oxford University vaccine's second dose is given 12 weeks after the first and the Moderna vaccine is recommended to have the second dose 28 days after the first vaccine.

### Why should I get the vaccine?

COVID-19 can have serious, life threatening complications and there is no way to know how you would be affected if you caught coronavirus. The vaccine is very likely to prevent you from getting COVID-19 symptoms if you are exposed to the virus, and even if you do catch the virus and display symptoms, the vaccine is extremely likely to stop them being so bad that you require a trip to hospital.

### How will the vaccines be rolled out?

The Government has been advised to prioritise those most at risk of catching coronavirus and suffering serious complications, to be vaccinated first. Below lists the eligible groups for the vaccination starting with the highest priority.

- Older adults resident in care homes and care home workers
- All those 80 years of age and over and frontline health and social care workers
- All those 75 years of age and over
- All those 70 years of age and over and those who were classed clinically extremely vulnerable
- All those 65 years of age and over
- People between 16-64 years of age with underlying health conditions that put them at higher risk
- All those 60 years of age and over
- All those 55 years of age and over
- All those 50 years of age and over

### How can I get a vaccine?

The NHS will contact you and invite you to book an appointment when it is your turn to have the vaccine. It is important not to contact the NHS for a vaccination before then.

As always, please stay safe, healthy, and protect the NHS.

**Phil Day - Superintendent Pharmacist**



## **CASES IN DORSET**

We are now in National Lockdown No 3. In line with the situation across the wider South West region and England as a whole, we have seen a significant increase in our case numbers and rates over the last couple of weeks. We are also seeing a worrying rise in hospital admissions.

COVID-19 update - 8 January						Public Health Dorset	
Dorset and Bournemouth, Christchurch and Poole						#doyourbit	
	Most recent 7 day period		Last update (4 January)		7-day cases trend	COVID deaths* in last 7 days <small>*within 28 days of positive Covid-19 test</small>	
	Cases	Case rate per 100,000	Cases	Case rate per 100,000			
BCP	2,400	607.1	1,540	389.5		7	
Dorset	1,171	309.4	744	196.6		4	

## **NATIONAL LOCKDOWN RULES**

You must not leave your home, or be outside of your home except where absolutely necessary.

**YOU MAY ONLY LEAVE THE HOME TO:**

1. Shop for basic necessities, for you or a vulnerable person.
2. If you cannot do so from home, you may do so to go to work, or provide voluntary or charitable services.
3. Exercise with your household (OR your Support Bubble) OR one other person, ONCE A DAY. You should not travel outside your local area.



**"The situation over the next couple of weeks is the most serious our local NHS services has faced. The growth in cases is doubling and our hospitals are already overstretched."**



## **Sam Crowe, Director of Public Health for Dorset and BCP Councils said:**

*'What we are seeing in the county, is not like anything we've seen before. The situation over the next couple of weeks is the most serious our local NHS services has faced. The growth in cases is doubling and our hospitals are already overstretched.'*

*'The new variant of Covid-19 is known to be much more easily spread. Mixing with other households is mainly how this virus is spreading locally, putting people at risk. Above all else, we MUST stay home to protect the NHS and save lives.'*

A blue-tinted poster for the NHS Covid-19 vaccine. It features a grid of images showing various people, some wearing masks. The text is overlaid on the grid. At the top left is the 'HM Government' logo. In the top right is the 'NHS' logo. The main text is in a large, bold, white font: 'Covid-19 vaccine' followed by 'The NHS will get in touch when it's your turn to be vaccinated'. At the bottom, a yellow banner contains the text 'Find out about the roll-out at [nhs.uk/CovidVaccine](https://nhs.uk/CovidVaccine)'.

The health and care system in Dorset has been working extremely hard to deliver the COVID-19 vaccination programme to local people. We are delivering the vaccine in line with the national guidance, which means those people who are most at risk will be invited first.

The NHS will get in touch with you when it's your turn to be vaccinated.

**PLEASE DON'T CONTACT US TO SEEK A VACCINE**

## **SCAM WARNING !!!**

**WE'RE AWARE OF A SCAM TEXT THAT'S CLAIMING TO BE FROM THE NHS. PLEASE BE VIGILANT. THE NHS WILL NEVER ASK YOU FOR YOUR BANK DETAILS.**

## **DOGS IN PUBLIC PLACES**



A dog-related Public Spaces Protection Order (PSPO) across the Dorset Council area came into force on 1 January 2021.

For the first few weeks, we're focussing on advice and guidance to dog-owners, explaining the new rules.

This Order replaces a number of existing dog-related PSPOs across the Dorset Council area. The intention is that the new Order will provide clarity and consistency across the area for dog owners and non-owners alike, about dog controls on public open spaces such as beaches, sports fields and other public areas.

# New Local COVID-19 Contact Tracing System

**Dorset Council, in partnership with Public Health England, is launching a locally supported contact tracing system for the Dorset Council area.**

From Friday 8 January Dorset Council's Customer Services Team have been working to trace residents who have been in contact with someone who has tested positive for COVID. If the national NHS Test and Trace system is not able to contact a local resident after two days, their details will be passed on to the council to help find additional contact details. The local contact tracing team will then try to get in touch with the resident by phone, text, or email over the following 72 hours.

Residents will be asked about their recent activities and who they may have been in contact with during this time. This information is then fed back to the national team who pick this up and attempt to contact anyone that may also have been infected.



**Cllr Laura Miller, Portfolio Holder, Adult Social Care & Health commented:**

*"Contact tracing is a vital part of the efforts to stop the spread of COVID-19 and we're working to support the national NHS Test and Trace service by calling, texting and emailing local residents who have tested positive for the virus.*

*"Now more than ever it is crucial that we all follow the new national lockdown restrictions. If you or a member of your household tests positive for COVID-19, if you are contacted by NHS Test and Trace, or if you are contacted by us, you must stay at home and self-isolate."*



**Sam Crowe, Director of Public Health for Dorset and BCP Councils said:**

*"It's great that Dorset Council is helping the national NHS Test and Trace team to locate residents who may have been in close contact with a positive COVID-19 case. The more resource we have in contacting these close contacts, the more people will be self-isolating and helping to slow down the spread of the virus.*

*"Everyone can play their part to help slow down the spread of coronavirus by downloading the NHS COVID-19 app and if you do get a positive coronavirus test result, please give the contact details of anyone who you may have been in close contact with to NHS Test and Trace so they can do their job and tell people to self-isolate. If you do get a call from the national team or Dorset Council telling you to self-isolate, please stay at home."*

**If you have been told to self-isolate and are on low income or benefits you may be entitled to the Government's NHS Test and Trace support payment. Find information, help and support to stay at home at [www.dorsetcouncil.gov.uk/coronavirus](http://www.dorsetcouncil.gov.uk/coronavirus)**

**Further information on the NHS Test and Trace is available at [www.gov.uk/guidance/nhs-test-and-trace-how-it-works](http://www.gov.uk/guidance/nhs-test-and-trace-how-it-works)**





## Covid-19 Vaccine Scam

Dorset Police would like to make you aware of the following scam which has occurred over a wide area.

Users have been sent a text purporting to be from a NHS body or similar informing the user that they are entitled to a COVID-19 vaccination. They are then invited to click on a link within the text message that takes them to a web page.

This web page will ask for personal details including "card payment details"

**By supplying this information personal bank accounts are being raided by the scammers.**

This is a very convincing text purporting to be from the NHS. Any genuine invitation from your GP or other NHS body for the COVID-19 vaccination will NOT ask for any payment details.

Stay Safe - Stay Home - Stay Well  
and beware of this Scam

Should anyone receive similar contact, please report this to Action Fraud on **0300 123 2040**, or online at [www.actionfraud.police.uk](http://www.actionfraud.police.uk)

Follow this link to the Dorset Police website for crime prevention advice -  
<https://www.dorset.police.uk/help-advice-crime-prevention/>

### A LITTLE BIRD TWEETS



DOES ANYONE FROM DORSET COUNCIL KNOW...

The new National Lockdown Rules say:

"...You should not travel outside your local area."

Can someone tell me what's 'our local area' ... does that mean - my village - my town -  
2 miles? 5 miles? 10 miles? 20 miles?

**WE DO NEED TO KNOW!**

We need your  
help please!

## CALLING ALL RESIDENTS OF OUR PURBECK COMMUNITY



Would any of you, your family or friends be prepared to share your experience of what using the Swanage Ambulance Car and Paramedic has meant to you? It might really help our case to keep the Car and get the important message across. If you are worried about your name being used, please don't worry. We will not include any of your personal details in any report we draw together. But it would really help if we can collect as many stories as we can to show the powers-that-be just how vital this wonderful service is to our Community.

Please email:

[cllrmonkhouse@swanagecouncillors.uk](mailto:cllrmonkhouse@swanagecouncillors.uk)

or Tel: 01929 426127 to discuss





## FRIENDS OF SWANAGE HOSPITAL

<https://www.friendsofswanagehospital.org.uk/>

We felt it was really important to do something at Christmas for the wonderful staff at our hospital, so on 23rd December we asked our Mayor to hand over Christmas gifts and individual thank-you cards for every single one of the 136 members of staff. A present was also given to every patient on the ward on Christmas Day.

At the end of an extraordinary year when we completed four exciting projects, it is so sad we are unable to show them to you all. Hopefully one day we can have a grand formal opening but be assured that the staff are absolutely delighted with all the new facilities your donations have provided.

**If you need to go to the hospital by car please use the new car park which is now open for staff, patients and visitors.**

We look forward to doing even more renovations and investing more funds in the coming months, so our hospital has whatever it needs to provide the best possible care for patients and an excellent working environment for staff.

**If you're not a member of the Friends please do think about joining or making a donation. You can do it on line at our above website.**

*Jan Turnbull, Chair*



Swanage Mayor, Mike Bonfield, hands over Christmas presents from Friends of Swanage Hospital, to Minor Injury Practitioner, Alan Le Sueur



Long-serving Senior Cook, Claire Thompson, receives Christmas presents from Swanage Mayor, Mike Bonfield



## "HELLO" FROM THE FRIENDS OF WAREHAM HOSPITAL

As I write the Purbeck Primary Care Network (PCN) and staff at Wareham Hospital have been busy working incredibly hard to prepare for the Purbeck Covid Vaccination Programme which is due to start at the hospital later this week on 14th January 2021; This will have been a mammoth task to undertake.

As Friends of Wareham Hospital and Purbeck Community services we are delighted that the hospital is being used for this important work which will cover patients from all 6 GP Practices in the Purbeck Health locality. Staff across the whole of Purbeck will be working even more closely together supported by a strong volunteer force from across the local communities. As a past Purbeck NHS Manager of many years and now the Chair of Friends I would like to acknowledge this work with sincere gratitude.

Wareham Hospital is in the centre of our local area and will provide the opportunity to vaccinate as many people as possible as quickly as possible from across Swanage, Wareham and the local villages in a clinical setting.

As a Friends group we recognise that during these unprecedented times travel to and from the hospital for Covid vaccination may cause financial problems for some and whilst our funds are not excessive we would be, as supporters of Purbeck services, very happy to help individuals if we can.

We can be contacted through Wareham Hospital, Streche Road, Wareham

**MAGGIE HARDY, FRIENDS CHAIR**

Charity number 252073

# SWANAGE COMMUNITY HOUSING GROUP

Following the public meeting held on 18th November 2020, via Zoom, the Swanage Community Housing Group had a positive response with several attendees expressing interest in joining the steering group.

Towards the end of January, we will be meeting three or four interested parties to assist with progressing the Community Housing project. We then hope to be in a position where we can start to make decisions including what sort of organisation would be right for Swanage and how we should set about creating the first houses.

Once we have agreed the structure and started registering the Company, we will identify and consider some potential build sites. At this point in time we are thinking quite modestly in terms of perhaps five or six dwellings as an initial project.

We will continue to maintain contact with all attendees from the public meeting, who it is hoped we will be able to involve at a later stage.

We are making steady progress and will update the community with developments as they unfold. **FOR INFORMATION** regarding upcoming meetings please visit:

<https://www.swanage.gov.uk/Meeting-Agendas.aspx>



Photograph by Gwenda Yeomans



## A message from the Mayor of Swanage, Councillor Mike Bonfield

As I sit here thinking about the impact of Lockdown three, it seems somewhat harder than Lockdown one. I have said, many times, how lucky we were that the weather was so kind to us in Spring - we were able to sit in the garden, do outside jobs and chat to neighbours over the fence.

So far during the present lockdown, it has been so cold I expect we have all been stuck indoors with the heating on. This could make the continuing problem of loneliness and isolation a greater concern. Therefore, I ask you all that if you know of anyone sitting indoors alone, please make the effort to let them know there are people around to help and support them.

It seems that we still have some way to go with this terrible COVID-19 virus but we are continually being told there is light at the end of the tunnel. Personally, I am worried as we do not know how long this tunnel is!

Hopefully by the time this January Newsletter gets to you, we will have information about the vaccine being administered to residents of the Purbeck area.

On another uplifting matter, it has been so good to see so many families using the refurbished playground on the recreation ground. It is always so heart-warming seeing children happy and enjoying themselves.

Looking forward, the days are getting longer and the forecast is for the warmer weather to return. But, please, do continue to follow government guidelines stay indoors as much as possible. Remember - **HANDS, FACE, SPACE** - at all times and do all you can to help others and our wonderful community.

Keep Safe - Keep well.

**Cllr Mike Bonfield**

# WellBeing SWANAGE

**Well Being: The state of being or doing well in life; happy, healthy, or prosperous condition; moral or physical welfare (of a person or community). [Oxford English Dictionary definition]**

This Covid19 Pandemic has highlighted the importance of wellbeing for individuals and communities, and Swanage has certainly risen to the challenge with supportive neighbours, buddies, shops going the extra mile with deliveries, providing food and meals, social groups, free on-line sessions, providing advice and information etc, etc.

The public sector has been stretched to breaking point and, with shrinking budgets, this is unlikely to improve when we come out of lockdown, with pressures on health, local government and other public services.

The Swanage community is brilliant at being there for each other and has risen to many challenges in the past - campaigning to keep: Swanage Hospital, Swanage Day Centre, James Day Home and most recently the Paramedic Car - to mention just a few. We will continue to work to keep services and welcome new ones to keep Swanage thriving. To this end Swanage Town and Community Partnership, Swanage Town Council and Swanage & Purbeck Development Trust have set up a WellBeing Swanage Group and will keep you involved and informed of progress.

We have therefore decided to run a regular monthly feature in this Newsletter that focuses on accessible services, activities and information relating to Wellbeing in Swanage and surrounding villages. We recognise this is a broad heading and would particularly like to include supporting:

- mental health
- isolation
- children and families,
- young people
- older people
- physical / mindfulness / health activities
- food provision
- debt
- counselling

This list is indicative rather than definitive, so, if you think you or your organisation has something to offer (it can be in the form of an article, list or whatever form works for our readers) - please get in touch. Please include: what is provided, your contact details and any cost.

**Please send in your details to our editor:**

**Gerry Norris - email [melvyn.norris@icloud.com](mailto:melvyn.norris@icloud.com) or (Tel: 01929 426127)**



**Together we can ensure that Swanage continues to be a compassionate community and plan for its future, long-term WellBeing**



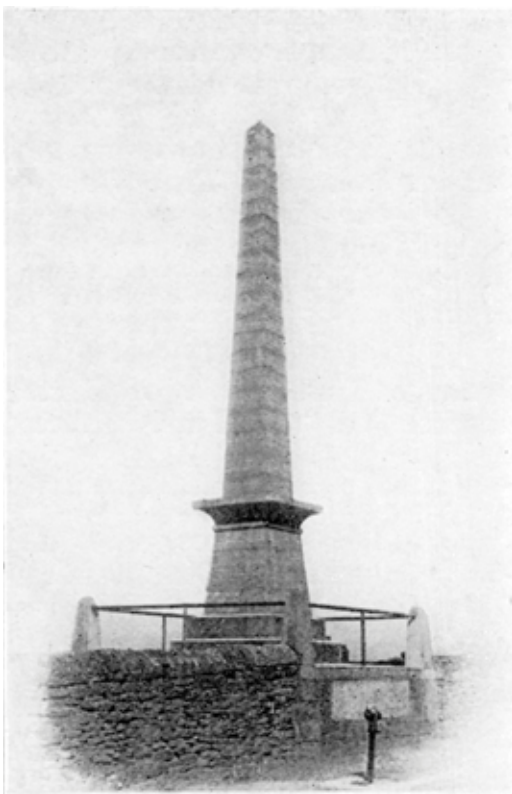


Website: [www.swanagemuseum.org.uk](http://www.swanagemuseum.org.uk)

e-mail address: [museumswanage@gmail.com](mailto:museumswanage@gmail.com)



Work will soon commence on getting the Swanage Albert Memorial in place at Prince Albert Gardens on the Downs. After spending the last 50 years in a local quarry, the memorial will return to its new home in the town. This historic monument was the very first to be raised in this country to the memory of Prince Albert, so it is important that this unique piece of Victorian Swanage is to return to this splendid location.



You now have a unique opportunity to sponsor one of four teak benches, complete with plaque, that will surround the *Garden of Reflection*, or make any other donations. Please contact Mel Norris, Chair of Swanage Museum, on **01929 426127** for further details, or email: [albert.memorial@gmail.com](mailto:albert.memorial@gmail.com)



## THE MOWLEM THEATRE THE LATEST NEWS - JANUARY 2021

Despite the current lockdown which has, once more, resulted in the closure of the Mowlem, the past months have seen a lot more activity. The reopening in October went well and audiences quickly established confidence in the protection that we gave against Covid-19. So, although not surprised, we were bitterly disappointed to have to close down once again. We would very much like to thank everyone for co-operating so well with us over this.

As part of this process there was a warm response to all the work that had been done to refurbish the entrance, auditorium and toilets, making them more welcoming and functional. So a huge thanks to the Trustees and volunteers who carried out this work during the previous lockdown.

At the Council meeting in December, Trustees presented the aspirations and vision that they had developed earlier in the year to be more inclusive and based at the heart of the community, seeking a positive relationship with the Council who, they hoped, would in future be more involved. The Council welcomed the presentation with enthusiasm and it was agreed that the Mayor, Mike Bonfield, would represent the Council as an Observer on the Trust.

Work has also continued on developing and delivering the vision and aspirations of Trustees. First by considering other Arts Venues in the region, to try and find out what lessons may be learned that would be relevant to the Mowlem. And second, a questionnaire has been drafted and is currently under consideration by Trustees prior to being widely distributed within the community. This is really exciting for Trustees as a first attempt to have some objective evidence of what the community really wants on which to base future programming and development. If you have an opportunity to complete the questionnaire, please do so. It is your opportunity to influence and contribute to the future of the Mowlem.

Finally we have been hugely encouraged by the response we have had to our Crowd Funding appeal for finance to support us through this Covid-19 period. So far we have reached over £3900 of the £5000 that we need. Hopefully by the time this is published we will have passed the £4000 mark and have less than £1000 to raise, please, please do what you can to help! Please get in touch with our Crowdfunder Appeal which has been extended to 2nd February in the light of the new lockdown:

<https://www.crowdfunder.co.uk/mowlem-coronavirus-appeal>

## THANK YOU TREATS FOR OUR LOCAL HEROES

*[courtesy of the Swanage.News Facebook page]*



**The Mowlem decided to share some of its tasty treats, after it was forced to close once again due to the third COVID-19 National Lockdown. The Mowlem was forced to shut during the first national lockdown in March and again in November 2020 because of the spread of the virus.**

Because of this closure, the venue has been unable to sell sweets from its kiosk. As a result, it is donating this stock to local emergency service workers as they carry on tirelessly through the new winter lockdown. Some of the longer shelf-life stock will go to Swanage Foodbank.

On social media, **The Mowlem** said:

*"We are very happy to give our sweets and treats to our local heroes."*



*South West Ambulance Service worker, Liam Blake*

Liam said on Facebook:

*"Today, I went to meet Thomas Curtis, who is the manager of The Mowlem in Swanage. Unfortunately they have had to close for the majority of the past 12 months meaning they had a lot of excess stock in the sweet Kiosk, some of which went out of date at the end of December. They have kindly donated this to the crews at Swanage Fire Station, Swanage Ambulance station, Wareham ambulance station and Wareham Fire Station as a thank you for the past year."*

*"I will also be leaving bits on ambulances at whichever hospital I find myself at during the course of my night shift tonight. On behalf of everyone that this huge hit reaches, thank you and hope to see you open again soon."*

**Wareham Fire Station added:** *"Thank you to Thomas Curtis, manager at The Mowlem, Swanage, who kindly donated sweets and drinks to Wareham Fire Station and other local emergency services."*





## Swanage Pier Winter Raffle!

To enter answer one simple Pier question and purchase your raffle tickets online for a chance to win. Tickets are just £1 each.

All proceeds raised go towards the ongoing maintenance of Swanage Pier, and there are fabulous prizes to be won. To find out how to enter, please use one of the contact details below:

Email: [activities@swanagepiertrust.com](mailto:activities@swanagepiertrust.com) OR -  
<https://www.swanagepiertrust.com/events> OR  
<https://raffall.com/140608/enter-raffle-to-win-fabulous-prizes-hosted-by-swanage-pier-trust>

Also, there is a news article on our website, which give full details of the prizes to be won -

<https://www.swanagepiertrust.com/news-article/swanage-pier-big-winter-raffle>

We greatly appreciated your support.



Photographs by Robert Field





### Fabulous Prizes From:



- ★ Athelhampton House & Gardens
- Compton Acres
- ★ City Cruises
- ★ JJ Moore Butchers
- ★ Langham Wine
- Lulworth Estate
- ★ Swanage Tourist Information
- ★ Swanage Pier Trust
- ★ The Tank Museum
- ★ The Pig Hotel
- ★ The 1859 Pier Cafe & Bistro





## Worried about cancer?

If you have signs or symptoms that could suggest cancer, it is important you seek clinical advice. GPs can still make urgent referrals to specialists or for tests if they're worried you might have cancer. Your GP surgery may offer you an online consultation, so you do not have to go to the surgery unnecessarily.

Please contact your GP surgery directly if you are worried about a possible cancer symptom. You can telephone or you can go to your surgery's website and complete and submit an online form via e-Consult.

If you have been referred by your GP and have been offered a diagnostic appointment, this means you have been given a fast track referral and it's really important you go to your appointment. A leaflet to find out the fast track referral and the next steps is available here - but you can request the leaflet in an easier, different format. Please email: [dcp@dorsetccg.nhs.uk](mailto:dcp@dorsetccg.nhs.uk).

## Signs and Symptoms

Cancer is a condition where cells in a specific part of the body grow and reproduce uncontrollably. The cancerous cells can invade and destroy surrounding healthy tissue, including organs.

It's important to be aware of any unexplained changes to your body, such as blood in your pee or poo, changes to your bowel habits, a lump, persistent bloating or pain that does not go away. Also, unexplained bleeding when you cough, or in your vomit. Symptoms such as shortness of breath or chest pain may also be a sign of a severe (acute) condition, such as pneumonia. See your GP straight away if you experience these types of symptoms.

These symptoms are often caused by other, non-cancerous illnesses, but it's important to speak to your GP so they can investigate. Finding cancer early means it's easier to treat. If your GP suspects cancer, they'll refer you to a specialist – usually within 2 weeks.

The specialist will carry out further tests, such as a biopsy or X-ray, and plan any necessary treatment.

1 in 2 people will develop some form of cancer during their lifetime. In the UK, the 4 most common types of cancer are: **breast cancer, lung cancer, prostate cancer, bowel cancer.**

There are more than 200 different types of cancer, and each is diagnosed and treated in a different way. The following links have more useful information about cancer:

- [Cancer Research UK: cancer symptom checker](#)
- [Macmillan: signs and symptoms of cancer](#)
- [National Institute for Health and Care Excellence \(NICE\): referral for suspected cancer](#)



## The Cinnamon Trust needs more dog walking volunteers in Swanage

The Cinnamon Trust is the national charity whose wonderful volunteers help people over retirement age and those in the latter stages of a terminal illness by offering all kinds of pet care. We are looking for dog walking volunteers to help a resident of Swanage and their dear little dog who would love to go for a good walk.

Many elderly or ill pet owners worry about their ability to provide proper care for their animals and start looking to rehome what may be their only companion. This is where our national network of dedicated volunteers step in to offer support enabling them to stay together. We'll walk the dog for a housebound owner, we'll foster pets when owners need hospital care, and even clean out the bird cage or litter trays.

If you are interested in becoming a volunteer, you can download our volunteer registration form from our web site [www.cinnamon.org.uk](http://www.cinnamon.org.uk) or email us at [appeals@cinnamon.org.uk](mailto:appeals@cinnamon.org.uk). If you would like to have a more in-depth chat about becoming a volunteer, please call us during office hours (Monday-Friday 9am-5pm) on **01736 758 701**, or you can check out our website [www.cinnamon.org.uk](http://www.cinnamon.org.uk) for more details.



The Cinnamon Trust is a Registered Charity No: 1134680. The Cinnamon Trust is a limited company registered in England and Wales. Registered Office: 10 Market Square, Hayle, Cornwall, TR27 4HE. Company Number 07004861



A NEW eco group formed in Purbeck is urging local residents to have their say in shaping the future of the area. Planet Purbeck has been set up as a hub for groups and individuals who want to protect and improve the peninsula's environment.

It aims to lobby for cleaner air, more green spaces, better public transport, greater use of renewable energy, wildlife conservation – and making Purbeck a leading destination for sustainable tourism.

**One of its first actions is to contribute to the online Public Consultation consultation launched by Dorset Council to determine its strategy for combatting the Climate and Ecological Emergency it declared last year. The new group is keen to point out the consultation is open to everyone – and wants as many people as possible to put forward their views by taking part. THE CONSULTATION ENDS ON 20 JANUARY, SO THERE IS STILL TIME TO INFLUENCE THE DECISIONS MADE FOR ALL OUR FUTURES.**

You can do so by going to Dorset Council's website at [dorsetcouncil.gov.uk](https://dorsetcouncil.gov.uk), then scrolling down to All Services and clicking on Climate and Ecological Emergency.

Planet Purbeck's co-ordinator Rob Waitt said: "A lot of people who care about climate change and threats to the environment feel helpless about doing something about it because it seems such an overpowering issue.

*"It's true most of us can only do something at a local level. But like small acorns growing into big oak trees, local movements can gradually influence what is happening in the world around us. That's what Planet Purbeck seeks to achieve. But it can only do so with the help of those living in the area who want to make it an even more wonderful – and sustainable – place in which to live, work and play.*

*"We are certain Dorset Council wants as big a response as possible to its consultation. And we hope lots of people will give their feedback to help the council prioritise its actions. It only takes a few minutes to do online but could lead to a better future for all of us. Please, please do it now."*

Though it was formed only two months ago, Planet Purbeck already boasts 250 members simply through word of mouth. And Rob, of Swanage, hopes it will grow quickly once it is officially launched in the New Year.

The group is already planning a major family-friendly festival, scheduled for next September, to celebrate Purbeck's coast, countryside and community.

Rob said:

***"The ultimate hope is that Planet Purbeck will become the go-to place for companies, councils and other organisations seeking local opinion on environmental matters. But for the moment we are taking things one step at a time and letting everyone know about the Dorset Council consultation is the top priority."***

**Hope ... Rob Waitt**







# Welcome to Sustainable Swanage



**Belated Happy New Year to you all!** We hope that you were able to have a peaceful and happy festive season. 2021 has kicked off to a challenging start. There are, however, reasons to look forward with hope and some positives to celebrate in the meantime.

Firstly, we would like to thank everyone for your support and contributions to Sustainable Swanage in 2020. It was very different to how we imagined, but there were also many positives and there are exciting steps forward being taken in our response to climate change. Last year we were fortunate to develop new and extended networks using the new medium of online Zoom meetings. We have made new friends and colleagues, new projects are being developed and we hope to see the results this year. New trees have also been planted or planned throughout the town for this season. There is still much we can continue with and many exciting projects for the community. And spring is just around the corner! There will be many opportunities for people to get involved: these include coming to our online meetings, sharing your stories, joining our communications group, active travel group and/or our new team of butterfly surveyors! - more details to follow.

## SURVEY LAUNCHED FOR THE DOWNS LOCAL NATURE RESERVE PROJECT IN SWANAGE

The area known locally as The Downs in Swanage is being proposed as a new Local Nature Reserve for Swanage and the process to achieve this got underway last summer in 2020. This will be an exciting opportunity to enhance a local facility for nature, residents, and visitors.

This project is being undertaken by Swanage Town Council in partnership with Sustainable Swanage including a growing number of local volunteers. So far they have been surveying and mapping the site for its habitats and wildlife as this has not been formally carried out here for many years. They would like to obtain your views on how they can enhance and improve the Downs area.

Councillor Mike Bonfield says: *"We are aware that many people currently use and have an interest in the Downs for a variety of purposes and we are keen to better understand what these may be. This way we can ensure that everyone can continue to enjoy this special place. We are also keen to help people get better connected to what makes the area special and share expertise within the community."*

A local group of people committed to being involved in the site will be set up as a 'Friends Group' which will seek to involve members from all age groups and areas of the town.

The intention is to produce a comprehensive management policy to maximise the area's future biodiversity potential. Swanage Town Council's Visitor Services Manager Culvin Milmer adds: *"This project will enhance one of the most popular areas of town for both visitors and residents alike. Studies show that investment in green spaces increases responsible tourism, adding a much-needed boost to the town economy."*

**The survey closes at 5pm on February 12th 2021.**



The Downs.



*Continued on next page*





Continued from previous page

## OUR NEXT OPEN ZOOM MEETING

Our next Open meeting will be held on Wednesday 27th January at 7pm. We will be talking 'environmental action plans' and how we can all respond to the Climate and Ecological crisis. Swanage Town Council will be presenting their newly formed plan and offering a chance to ask questions and see how people can support it too. **People will need to register to attend our meeting (to help us manage it and get an idea on numbers attending) they can do so by following this link below:**

<https://zoom.us/j/95811024940?pwd=Z1BSbkJuRXVLMVZjMEJCTnF0K2V2Zz09>

***Sarah Spurling***

**Sustainable Swanage and Litter Free Coast and Sea Project Officer**

Email: [sarah.spurling@dorsetcouncil.gov.uk](mailto:sarah.spurling@dorsetcouncil.gov.uk)

For more information please visit our website

<https://www.litterfreecoastandsea.co.uk/sustainable-swanage/>



New Oak trees planted on the High Street on the entrance to the town

## WAREHAM HOSPITAL COVID VACCINATION CENTRE



*'I heard from someone today that their COVID vaccination appointment went very well.  
Smooth as Silk! Well organised and no problems at all.  
Such a relief ...'*



## Durlston News - January 2021

### Latest News

We're so grateful to everyone who is working hard to stop the spread of the virus and thank you all for your support during this difficult time. If you're thinking of visiting, please remember to do so only if you live in Swanage or the surrounding area – we can't wait to see you again after the lockdown, but for now, please follow government rules and stay as local as possible.

To keep up with what's happening and the day at Durlston don't forget to follow our Facebook page, or read the Ranger's daily diary here: <https://www.durlston.co.uk/durlston-today.aspx>

**The Park, Car Parks and Public Toilets at the Learning Centre are OPEN - Durlston Castle and seventhwave are CLOSED. Trumper hire remains available for local visitors, for daily exercise (pre-booking only)**

### Audio Trails

Although we can't offer you a guided walk at the moment, our brilliant volunteer Rachel has put together an audio tour of the Clifftop Trail for you to download and enjoy! Follow the link here to download the tour and map: <https://www.durlston.co.uk/Audio-Tours.aspx>

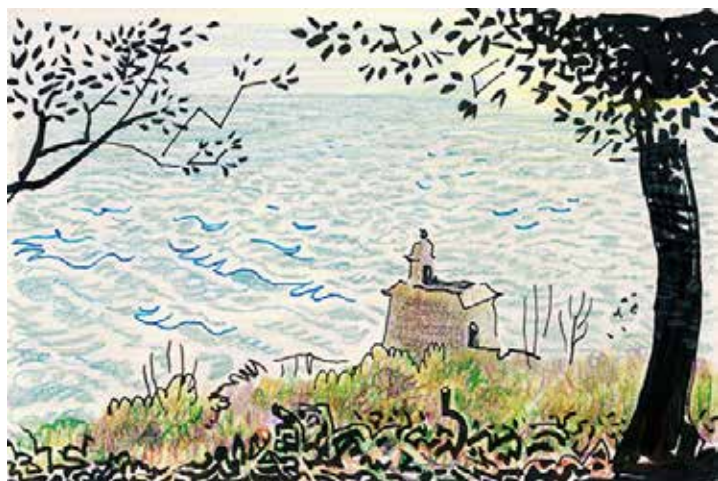
Let us know what you think, or if you have ideas for other ones (or have some spare time in lockdown and would like to make one!) please get in touch with Ali. Suggestions so far include WW2 history, the exotic plants of the Pleasure Grounds and activities for kids...



Volunteer - Rachel Oldham



Caravan Terrace - Tony Kerrins



Turret View Nov - Tony Kerrins

We are very lucky to have a wonderful archive of sketches and paintings of the **Pleasure Grounds Project** by Tony Kerins – a few of his pictures shown here...see more at [www.tonykerins.com](http://www.tonykerins.com)



## Pleasure Grounds Project News

Despite all of the challenges, our amazing staff and volunteer team have nonetheless managed to make great progress on the landscape work over the last few months and if you haven't been able to visit for a while, you've got some lovely surprises to look forward to when you can!

We have now finished clearance work at the 'Dell', revealing the Burt era bridge in all its glory and preparing the ground for planting next year. Lots of the Victorian stone tablets have been repainted and cleaned, with volunteer David's work on the tablets around the Globe attracting lots of positive comments. Meanwhile, a staff 'day out' prior to lockdown allowed us to cut the surrounding grassland and do lots of 'tidying up'.

Volunteer Theo has done a fantastic job, working with Ranger Ben and Apprentice Sammy, creating 2 new stone benches, incorporated into Dry-stone walls, while Alice Blogg is currently working on an extra wooden bench, which will be installed in the bottom viewpoint – this one inspired by dry-stone walls! Wall restoration is continuing, along with work to clear existing walls of vegetation.

Our tree surgeons are back for work around the viewpoints, crown lifting above paths and in Sunnydale, to increase light reaching the woodland floor and revealing more of the Black Pines along the Coast Path.

The new path across the top of Long Meadow is proving popular, especially now we are getting into wetter weather, and volunteer Con has grown some trees and shrubs which have now been planted out alongside.

Over the next month or two, lots of exciting work is planned, including planting of bulbs and shrubs around Sunnydale, the creation of a new wild play and sensory trail, the installation of new interpretation about seabirds at the Observation Point and new panels about Tilly Whim and the Durlston Bollards (kindly sponsored by 2 Friends of Durlston). Thank you so much to everyone who is helping!

## Delightful Downland!

Durlston's short turf grassland is of international importance, for species like Early English Gentian, Dwarf Mouse Ear and Nit Grass (none of which are more than a couple of inches tall!).

As this great photo by Debbie Welham shows, even in the depths of winter, if you get down to 'hands and knees' level, you can get a sense of this diversity – it really is a miniature rainforest!

The picture also gives a tantalising hint of spring, with a patch of the basal rosette leaves of Early Spider Orchid, (though you will have to wait till March or April to see them in flower). Although thriving at Durlston (with 1,000 recorded on the Park at last count), research suggests that climate change is likely to present a significant threat. While some Early Spiders self-pollinate, they are mainly pollinated by Mining Bees. The flower mimics a female Bee and blooms before the females emerge, so that the males, in attempting to mate with the flower, in the absence of any females, transfer pollen.

However, female bees seem to respond strongly to warmer spring temperatures and so are emerging before the Early Spider Orchids flower and given the choice, male bees seem to prefer mating with a female to 'pseudocopulation' with the flower. This, along with habitat loss, may explain why this species is so localised. You can read the full article here:

<https://www.botany.one/2018/03/the-orchid-thats-running-out-of-time/>



# Dorset National Park – for A Brighter Future

Don't we all look forward to a better future? A healthy future for nature and our planet as well as for people of all ages.

The Government has set out its plan for a green recovery and a greener economy over the coming years. A promise to create new National Parks is part of this plan. The sooner Dorset secures its National Park the quicker communities can enjoy the opportunities this would bring and a thriving, prosperous future.

A National Park would help Dorset to make more of the economic opportunities our great environment offers. It would attract investment, jobs and skills, including in the "green/blue" economy, helping Dorset to be "on the front foot" in seizing new opportunities. Based on evidence from the South Downs, a National Park would boost Dorset's vital tourism sector, with new, year-round tourism opportunities. It would encourage eco, heritage, cultural and dark skies tourism with increased value for communities and businesses. The National Park would help farmers secure new "public benefit" farm funding and offer national and international marketing opportunities for Dorset food and other products.

Dorset's families and young people can benefit from the life chances that a National Park can offer. Families need local affordable homes. A National Park would support local decision making on planning and work with councils, communities and others to meet local needs.

National Parks are partnerships and work through partnership. The Dorset Council would remain the lead local authority throughout rural Dorset and continue to deliver such key services as education, social care and highways. But the Council would have new help from the National Park in delivering services and supporting communities.

A National Park would bring genuinely additional money for Dorset. Its additional funding and work with communities, councils, schools and clubs, would add value to key services such as education, health and social care as well as boost funding for nature and heritage.

Edward Fox, OBE and Julian (Lord) Fellowes give their warm support to a Dorset National Park. Many local councils, societies and others agree. *"With our interest in supporting the mental health of children and young people in Dorset, we would welcome the increased resources a Dorset National Park would bring, and the new and exciting partnerships it could foster."* (Anna Powney, Children and Young People Service Manager, Dorset MIND.)

For more information and to see the latest Newsletter:  
<https://www.dorsetnationalpark.com/news>  
and follow on Facebook.



Lunchtime at Brownsea - Swanage Photographic Society







Corfe - Photograph by Ben Buxton

## Let's seize the moment...

- Support the health & well-being and life chances of Dorset's young people.
- Promote sustainable investment, boost jobs and skills.
- Help ensure a thriving future for our communities, environment and economy.
- Work with communities and councils to meet local housing needs.

The Government wants to create new National Parks. Dorset is the outstanding candidate.

Together we can secure the benefits of a National Park for all of Dorset.

Learn more at [www.dorsetnationalpark.com](http://www.dorsetnationalpark.com) and find us on Facebook

It's Time for Dorset's National Park



**WE ♥  
DORSET  
NATIONAL PARK**



**The Purbeck School**  
Achieving Excellence Together



## The Purbeck School: online and on trend!



Despite the latest lockdown, staff and students (and sometimes their parents!) have been hard at work enjoying a full programme of live learning, using the Teams programme to meet online.

Whilst the children of key workers have been welcomed to work in school, our community of learners in every age group has been logging in as per their usual timetable, and receiving excellent online tuition in all of their subjects. Once again, our website features a weekly *'Lockdown Learners Wall of Fame'*, a page recognising the fantastic learning that students at The Purbeck School have been completing during this period. We thank parents and carers for their ongoing support.

Headteacher Adam Darley said, *'We are very proud of the ongoing commitment shown by the students who are taking every opportunity to learn from their team of exceptional and dedicated teachers,'*

Additionally, support staff are fully trained and prepared to begin Covid testing, with all Purbeck staff tested on the days that they are in school. As much as ever, we all remain committed to our vision: ***'respect, aspiration and perseverance'***.







# THE SWANAGE SCHOOL

## Virtual school

Our virtual school is up and running well, complete with timetabled online face-to-face lessons. Teachers are reporting good attendance and engagement levels which is fantastic news, and we've had some lovely feedback from parents. School itself remains open for key worker children and vulnerable students.

## COVID testing

As you may have read, schools have been asked to set up rapid testing stations for students and staff. Although the full plan has been superseded for now by the national lock-down, our testing is in place for those who are in school and we are also working with local primary schools to test their staff too.

## Cooking for the Community

We're pleased to announce our "Cooking for the Community" project will be returning shortly. Last spring, we were able to use the school kitchen and staff to cook thousands of free meals for local families and individuals who were facing difficulties due to illness, self-isolation or other hardships during the first lockdown and, thanks to further funding from the Dorset Community Foundation, we will be able to do the same during the current lockdown. Arrangements are being made and then we'll get the word out to those who benefitted previously and via local groups.



## Planet Purbeck

We're delighted that Planet Purbeck is planning to have a Youth Group, comprising students from both The Swanage School and The Purbeck School, to act as a steering group and be the voice of young people within the larger Planet Purbeck organisation. Our eco-reps will be keen to get going, working with Planet Purbeck to investigate local environmental issues and find ways to engage their peers in projects and campaigns.

## The Swanage School Greenpower IET Formula 24 Racing Team!

Motor racing is coming to The Swanage School in an exciting STEM programme: the Greenpower IET Formula 24! Greenpower is an organisation that inspires and engages 11-16 year-olds in STEM - Science, Technology, Engineering and Maths - through a unique project to design and build an electric, single-seater car and race it on some of the UK's top racing circuits. The car comes in kit form and can be taken apart and rebuilt in successive years with new groups of students and with new bodywork. We're looking for partners and sponsors for our car and racing team so please get in touch with us if your business would be able to become involved by providing technical/logistics support or contribute by sponsoring the car (and hopefully wider media exposure).

- **Contact DT Teacher Alex Duke on [alexduke@theswanageschool.co.uk](mailto:alexduke@theswanageschool.co.uk) to register an interest in the project**



## **SCAMS ARE INCREASING PLEASE READ THE FOLLOWING CAREFULLY**

### **News from Trading Standards**

#### **Warning about scams**

Fraudsters are increasingly targeting the public and organisations with emails, texts, phone calls and WhatsApp messages offering advice and treatment for the coronavirus, as well as setting up fake websites selling products and offering 'cures'.

Scammers have also been setting up bogus websites asking for donations for victims or promoting awareness and prevention tips.

Cold callers have been contacting organisations suggesting they must have certain measures in place by a certain deadline.

To help members of the public protect themselves from becoming a victim of fraud, the advice from Dorset Council Trading Standard is:

- Be sceptical if you receive an email, text or WhatsApp message about the coronavirus, and never click on any attachments or links
- Never provide personal data such as your full name, address and date of birth – scammers can use this information to steal your identity
- Don't allow yourself to be pressured into donating money, and never make donations by cash or gift card, or send money through transfer agents such as Western Union or Moneygram
- If you think you've been the victim of a scam, then speak to your bank immediately and report any fraud to Action Fraud on 0300 123 2040

Further information on dealing with scams and fraud is available from the Citizens Advice Consumer Service at  
<https://www.citizensadvice.org.uk/consumer>  
or by calling their new freephone number:  
**0808 223 1133.**



#### **Need Advice?**

**Purbeck Citizens Advice is Here to Help  
when You Need To Find A Way Forward**

We provide free, independent and confidential advice and information whatever your question.

Advisers are available 5 days a week to give advice on the phone or by email.

We offer a full range of up to date advice, including help with:

- Benefits entitlement and claims
- Debt management, budgeting and income maximisation
- Employment advice including furlough, Statutory Sick Pay and rights when laid off work
- Advice for the self employed including the Income Support Scheme
- Energy and water advice, support and schemes-including helping you to Check, Switch and Save on your energy bills as part of Big Energy Saving Winter
- Housing and advice if at risk of homelessness
- Referrals for charitable support or to food banks

**Purbeck residents needing advice can phone Dorset Adviceline on our new freephone line 0800 144 8848 (Textphone: 0800 144 8884), 10am-4pm weekdays to talk to an adviser.**

**Alternatively, you can use our webform at [www.purbeckadvice.org.uk](http://www.purbeckadvice.org.uk) for email or telephone call-back, and access a wealth of self-help advice online at [www.citizensadvice.org.uk](http://www.citizensadvice.org.uk)**

**For details of Winter Support for local residents who may be struggling financially due to Covid-19, visit <http://purbeckadvice.org.uk/winter-support.html>**

**For more information about how to save money on your energy bills visit [www.bigenergysavingwinter.org.uk](http://www.bigenergysavingwinter.org.uk) or email [energyadvice@cabnet.org.uk](mailto:energyadvice@cabnet.org.uk)**





## St George's Goes Green! A Forest School in Langton Matravers

St George's Church of England School in Langton Matravers have set up a Forest School. The Forest School activities take place in the Community Woodland and Orchard and the adjacent school playing field. All the pupils at St George's will have regular access to the Forest School programmes.

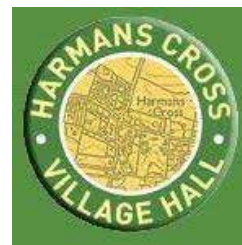
Recent studies have highlighted some of the many benefits of outdoor learning for young children, including:

- higher levels of conversational language
- greater independence
- improved health and sleeping patterns
- greater physical competence and agility
- improved time focus on activities and more concentration
- a greater understanding of nature and the environment
- improved social skills, involvement and initiative

The Forest School concept originated in Scandinavia. Since being adopted in the United Kingdom the approach has been used to deliver learning programmes to groups from pre-school age to young adults and across all abilities.

The Forest School setting provides a safe environment for the children to learn and explore. Activities take place throughout the year and in generally in all weathers. Wellies, fleeces and coats are a regular part of the day at St George's!

**James Mercer - Assistant Rural Dean of Purbeck**



## Harmans Cross Village Hall

After last year, we could not have imagined we would once again find ourselves in lockdown. During the first lockdown last year, we completed a risk assessment and put all the recommended Covid-secure measures in place.

During the summer some activities resumed and we were relieved to have people using our lovely hall again. We even managed to host one wedding with 30 guests, as was allowed at the time.

At the moment the village hall remains open but only a very few permitted activities are taking place. We hope that rapid rollout of the vaccine enables us to get back to something like normal by Easter.

Best wishes

Alison Clough

[alison.an.clough@btinternet.com](mailto:alison.an.clough@btinternet.com)



*Photograph by Robert Field*

# SNIPPETS FROM STUDLAND



## STUDLAND PARISH COUNCIL

Representations were made at the virtual Public Inquiry into the proposed increases in toll fares. The case for a zero increase was made based on an analysis of the financial information from the ferry company. Important issues raised included an adequate rate of return, the ownership of the road and more flexible pricing (discounts for locals). The harm to the local economy of the area of higher toll fares was made clear.

Progress is being made over the "20 is Plenty" campaign to reduce speeding as Dorset Council aim to review their policy and guidance for areas wishing to have speed limits. Initially these areas include Studland, Langton and Winfrith. Parish and Town Councils are contributing to the emerging Transport Strategy for Purbeck being developed by the Purbeck Transport Action Group. Studland wish to see weight and traffic restrictions on the B road from Studland to Corfe Castle.

Parking in the village and on the ferry road are being considered within the Transport Strategy.

The *Pig on the Beach* wish to erect another intrusive polytunnel for growing vegetables next to ancient footpaths and a listed building. Other sites are available so as to limit harm to the Studland Conservation Area.

Village rumour is of a large project to develop sea grass in Studland Bay as part of a rebranding of the two beaches and as a contribution to sustainable tourism (an oxymoron?). It is a shame that the issue of tensions between access, excess, and tourism is not being grasped by organisations, decision-makers and elected members.

For more info go to:

[www.studlandparishcouncil.org](http://www.studlandparishcouncil.org)

## THE PURBECK SOCIETY

An invitation has been received for assistance and guidance in the identification of non-listed heritage assets in Swanage Conservation and associated areas. These areas include: Durlston, Swanage Hospital, De Moulham Estate, Ulwell Road and linked roads, Ballard Estate, Kings Road West, and Princess, London and Cecil Roads.

Reports and observations have confirmed the decline in the Conservation Areas of Swanage.

The Purbeck Society are considering how to use their experience and knowledge to assist with this important survey work.

The Dorset (south) AONB and the National Trust have obtained external funding for a heathland project covering the area from Studland to Wareham. The Purbeck Society have indicated their interest in the industrial archaeology and the history of the area.

The consultation on the Main Modifications to the Purbeck Local Plan ended on 15.01.21. Earlier objections over housing numbers, a lack of affordable homes build (especially for local residents), an ill-defined Small Sites Policy, a weak Environmental Infrastructure Survey, and a limited second homes policy that excludes holiday lets still remain. The Purbeck Local Plan if approved by the Inspector will become part of the Dorset Local Plan expected in 2023 or 2024. Increasing market housing numbers are likely to have adverse effects (noise, congestion, pollution, urbanisation) throughout Purbeck.

Planning in Purbeck has suffered a set-back with changes in membership of councillors on the Dorset Council Eastern Planning Committee - decisions are now being made by a majority of councillors from beyond the Purbeck area who may lack local knowledge.

For more info go to: [www.purbeckociety.co.uk](http://www.purbeckociety.co.uk)

**DORSET CPRE** are very concerned with the emerging Dorset Local Plan. There has been no meaningful engagement over the creation of a shared vision for Dorset. Reliance on the earlier work of the former District Councils, excessive numbers of new houses far in excess of local housing need, and an apparent absence of policies to deal with the emergencies of climate, health and ecology all ring alarm bells for the future of Dorset.

Dorset CPRE strongly supports a Dorset National Park as this would be able to develop a method for calculating housing numbers based on local housing needs and adequate affordable housing much needed for key workers and young persons throughout the County.

The proposed 100 home park at Morden in the area west of Sherford Bridge-an environmentally sensitive area in the Green Belt-will be subject to an objection under the Purbeck Local Plan. It is rather surprising that so little publicity has been available for this proposal on land owned by Richard Drax, MP for South Dorset. For more info go to: [www.cpre.org.uk](http://www.cpre.org.uk)

**Nationally CPRE are launching their Vision for Planning.** Have a look at their website and maybe even join? For more info go to: [www.cpre.org.uk](http://www.cpre.org.uk)





Knowing Jesus and making Him known



emmanuel baptist church

## A very warm welcome awaits!

Our building may be closed for some activities, yet we are still very much 'open' as a Church in many other ways!

At present of course, due to COVID-19, we are unable to meet as we would like to or as we used to, but there are still lots of ways you can connect with us. A warm welcome awaits you nonetheless!

We are live online via our facebook page each Sunday and we are meeting at various other times and groups each week, either by Zoom or in person under the Government guidelines for 'places of worship'. This is so we can keep everyone safe yet still connect together as Church.

If you would like to join with us and know what's available, please contact us at:

[contact@emmanuelbc.org.uk](mailto:contact@emmanuelbc.org.uk)

Our Facebook Page is:

<https://m.facebook.com/Emmanuel-Baptist-Church-Swanage-561922493827260>

Hopefully we'll be able to meet you face to face at some point in the future



***As National Lockdown returns amidst high case numbers - calls go out for volunteers to aid vaccination programme***

## WILL YOU VOLUNTEER TO HELP THE CORONAVIRUS VACCINATION PROGRAMME?

Whilst the Purbeck Primary Care Network who organise and oversee this vaccination programme appear to have enough volunteers for the immediate future, the vaccination programme is going to be a marathon rather than a sprint. If, therefore, you would like to volunteer please do get in touch and we will keep a "volunteer bank" in reserve for when it may be needed.

**The volunteer shifts will be:**

**from 8am-12noon, 12 noon-4pm, and 4pm-8pm. This will all be at Wareham Hospital, with special provision of PPE and professional organised socially distancing.**

**There are five distinct jobs:**

1. Car parking
2. Meet and greet
3. Admin (but this may be undertaken by the NHS)
4. Refreshments for the volunteers and NHS staff
5. People to check patients aren't having a reaction to the vaccination for 15 minutes after each vaccination. If someone is unwell there will be an NHS Crash Team available and volunteers will not be expected to help.

If you can help, the organisers would like to know if you have a current DBS check and/or a current First Aid Certificate. If you haven't got either of these, it does not stop you from volunteering.

**You can email us at**

**[swanageneighbours@gmail.com](mailto:swanageneighbours@gmail.com)**

and as this campaign is being co-ordinated by **Swanage & Purbeck Rotary** your confidential information will only be shared with the relevant Co-ordinator at Rotary and the Purbeck Primary Care Network.



Photograph by Robert Field

# Swanage Food Bank



I do hope everyone is feeling hopeful and keeping safe and well as the New Year is now well underway. Thank you again for all your support in 2020, and now for the January 2021 update.

## Current needs :

cartons of long life apple and orange juice  
breakfast cereals (about 340g not gigantic size)  
porridge oats  
instant coffee (100g and larger) regular and decaff  
long-life milk  
tins of minced beef and gravy, stewed steak, stew, chilli  
con carne, chicken in white sauce, meatballs  
Frey Bentos pies  
instant noodles  
tins of macaroni cheese, ravioli, or other pasta in sauce  
baked beans  
savoury snacks - crisps, Pringles, Twiglets, salted  
roasted peanuts+ cashews  
savoury crackers e.g. cream crackers, Ritz, oat  
biscuits  
cartons of ready-made custard  
tinned fruit and desserts e.g. whips, microwave  
puddings, tinned rice puddings

## Household and toiletries needed :

anti- bac cleaning sprays, washing-up liq, J-cloths or  
sponges for wiping surfaces  
kitchen rolls, loo rolls,  
dental items for adults and children  
soap and bath or shower gels, anti-bacterial hand  
wash

## We don't need (because well-stocked) at present :

sweet biscuits, chocolates and sweets, soup, dried  
pasta and rice,  
Sanitary pads/Tampax, baby products

As always please: food donations in our supermarket  
bins and outside the Salvation Army Lower Hall in  
King's Rd East on Mondays, Weds and Fridays  
between noon and 2.00pm. If you have any empty egg  
boxes, we would appreciate having them. And please  
keep up with giving us bags for life as we have a very  
rapid turn-over of carriers.

We are here to serve all our community members  
who are struggling to buy food for themselves and their  
families. Swanage Food Bank is only a phone call  
away: **07759230313** and for enquiries, making  
donations, etc **07713637208**

**Pauline Werba (Chair of SFB)**



## DORSET LIBRARIES ANNOUNCEMENT JANUARY 2021

Following recent government COVID -19  
announcements, we are required to close Dorset  
libraries except for our Order and Collect service.

Existing loans due on or after 21 December 2020  
will be automatically extended from the due date until  
at least 01 March 2021 (loans will be extended by 63  
days). Should our libraries remain closed beyond this  
date, we will continue to extend these loans to ensure  
they do not go overdue. For items that are already  
overdue on or before 20 December 2020, charges will  
continue to apply. Items can be renewed using the  
Libraries West website [www.librarieswest.org.uk](http://www.librarieswest.org.uk),  
Libraries West app, or **phoning 01305 224311**.

The **Order and Collect service** is available,  
offering you the opportunity to order a selection of  
books, DVDs and talking books which are chosen to  
meet your reading preferences. Further information is  
available at [www.dorsetcouncil.gov.uk/libraries](http://www.dorsetcouncil.gov.uk/libraries) or  
by phoning **01305 228400**.

Whilst your library is closed, you will still be able to  
place any requests using our online catalogue for  
collection at one of our libraries and any current  
requests you have made will continue to be  
processed where possible. You will be contacted by  
the library when a requested item is available for  
collection so that a time can be arranged for you to  
collect the item(s).

You can return items borrowed from the library via  
the letterbox and please do not leave them on the  
doorstep, as they could be stolen or damaged.

**Our free digital e-book, e-audio, e-magazine,  
e-newspaper and e-comic services continue to be  
available; for more information on these please  
visit [www.dorsetcouncil.gov.uk/libraries](http://www.dorsetcouncil.gov.uk/libraries)**

**Community managed libraries may have  
different arrangements – so please check with  
your local community managed library.**

**If you have any queries contact us at  
[dorsetlibraries@dorsetcouncil.gov.uk](mailto:dorsetlibraries@dorsetcouncil.gov.uk)**



# Nature, Art and the 5 Ways to Wellbeing

Free online workshops to help you stay well this winter



Learn about the 5 Ways to Wellbeing online  
then get outdoors and get creative!

A gentle introductory course suitable for all levels of experience.  
Meet new people online, learn simple creative techniques and set yourself goals for getting outside safely and enjoying our local parks and beaches.  
No specialist materials required. Free to take part.

Weds 20th Jan	10.30am - 12pm	<i>Connect</i>
Weds 27th Jan	10.30am - 12pm	<i>Learn</i>
Weds 3rd Feb	10.30am - 12pm	<i>Give</i>
Weds 10th Feb	10.30am - 12pm	<i>Be active</i>
Weds 17th Feb	10.30am - 12pm	<i>Take notice</i>

To find out more and book your place please email  
[p.holloway@bournemouthparksfoundation.org.uk](mailto:p.holloway@bournemouthparksfoundation.org.uk)



Parks in Mind  
Healthy parks, healthy you





## 2021 - A Year to look forward to?

Ok, that may be stretching it. I'm writing this as cases are as high as they ever have been and are still climbing across Dorset and the rest of the country. I'm working from home (Poole) with rare visits to Purbeck when I have something on site that is urgent to do. I'm struggling to get outside because I work when it's light and when I'm not working it's cold and dark. But, for a bit, let's park the virus and look ahead for some positive change to come across the Purbeck landscape this year.

On the heaths the various partners involved in the Purbeck Heaths National Nature Reserve will be creating a new large single grazing unit. The landscape will look and feel wilder - with less internal fencing across Arne, Stoborough and Slepe Heaths plus Hartland Moor and a wider variety of grazing animals to come in the following year. Alongside the landscape change we should have new online and site-based resources to bring it all alive. Plus the ambition to recreate a heathland dwelling with the Ancient Technology Centre over the year. Real change in 2021.

On the dunes there should be cattle grazing for the first time in 70 years, creating and maintaining a greater diversity of vegetation structure required by some of the country's rarest plants and invertebrates. For more info (and if you're a group who'd like a Zoom talk on this) contact Julia: [julia.galbenu@nationaltrust.org.uk](mailto:julia.galbenu@nationaltrust.org.uk)



Our red Devon cattle were bred to make the most of unforgiving landscapes - National Trust/Aemelia Roe

On the south Purbeck coast we'll be closely monitoring the small population of puffins that were showing signs of successful breeding last year, to see if they can continue to present a hopeful future. The drought of last year should mean a bumper profusion of wild flowers in late spring early summer, the lack of water tends to knock back the grasses that can smother other plants.

In Poole Harbour the Birds of Poole Harbour charity will be (COVID permitting) continuing their osprey reintroduction programme. Could it be this year that we get the first breeding pair for hundreds of years (look out for their webcam footage – it was the highlight of last spring's lockdown for many).

Across Purbeck groups in various towns and parishes have continued over the past year to develop and deliver plans that make Purbeck better for nature and carbon (Sustainable Swanage representing the town so well). As a culmination to this Planet Purbeck's Festival on the last weekend in September could (who knows what will be happening by then) be the event of year – a place where the Purbeck community can come together for free, have a lot of fun and work out together how we're going to get through the climate and ecological emergency.

It's definitely going to be another tough year (please don't let this be an understatement). But by the end of it let's hope we've all had a sufficient dose of our landscape to keep us positive as we wait in line for couple of doses of the hard vaccine stuff.

Take care and don't forget to go outside.

**Tom Clarke,**

**Engagement Officer, NT Purbeck**





# Corfe Castle Parish Council

## JANUARY AT THE PARISH COUNCIL

Firstly, a Belated Happy New Year to everyone within the Parish. Let's hope for a healthy and prosperous year ahead.

### Budget and Precept for 2021-2

After a lengthy discussion the draft budget as set out last month was agreed which means, we can continue to offer the regular services including the playground, grass cutting of the Sports Field, the youth club and keeping the pavements weed free, plus a possible major upgrade of the playground financed from our reserves. The budget now includes the upkeep of Gods Acre and the possible engagement of a Village Lengthsman / Caretaker. If you would like to know more or have any comments please see our website or talk to the Clerk.

### Corfe Castle Parish Council Environmental Group

A first for Dorset Parish Councils! An empowering People's Assembly - hosted by Corfe Castle Parish Council Environmental Group on 5 Jan 2021. The People's Assembly approach is totally new to our village so we were thrilled and heartened with a turnout of 60+ (via Zoom, obviously!). The Assembly was held to discuss Dorset Council's proposed Strategy and Action Plan on the Climate and Ecological Emergency.

Corfe Castle Parish Councillor, Josey Parish, opened with: "Tackling these emergencies is the most important issue of our lifetime".

And boy-oh-boy did we get a response that reflected that. There was a real sense of 'a village hall feeling' throughout. The smaller groups (or 'tables') worked well, with great input from everyone.

As part of our submission to DC's proposed strategy, Dorset Council will receive every single comment that was raised on the night. That same input will also form solid foundations for the community of Corfe Castle as we continue moving forward in 2021.

Check out this comment by Jenny from Corfe: "All these people who go to sports centres to wear off their energy and to get fit ought to be plugged into the national grid producing electricity!"

One overriding concern was the disconnect between the Council's plan of action of 20 years and the Council's acknowledgement of the need for urgent action in 8-10 years; but it was also pointed out that financial constraints on Dorset Council could limit the urgency of their action and one group fed back that the targets need to be realistic. The positive outcome was that the community has bags of ideas and plenty of passion to back an accelerated target date. Many people were unsure of what they can do. With the help of their blossoming Environmental Group, we are now coming together to take ownership with the aim to make significant positive changes.

With regards to the virtual People's Assembly approach, Steve Clarke, the Chairman of Corfe Castle Parish Council, beamed with joy as he stated that: "It's brilliant and has transformed my vision of how you can arrange meetings and involve people in small groups." The Chairman continued: "This is an issue which affects everybody, and everyone has got to play their part."

We were really encouraged by the numbers of residents 'signing up' to get more involved. Our next Corfe Environment Group meeting is on 21st January, focusing on what actions we can all take as individuals. Find out more on our Corfe Castle Parish Council Environmental Group Page.

Dorset Councillor, Nocturin Lacey-Clark brilliantly noted at the beginning of the assembly: "There's no vaccine for climate change". We'd like to counter that thought though, following the People's Assembly "by working together, we're stronger together, we need to own this, we together are the vaccine!"

For more details head to the Environment Group page @ [www.corfecastlepc.org.uk](http://www.corfecastlepc.org.uk)

### Update from the National Trust

The updated Quinquennial report has been finalised, a little later than planned as it was originally commissioned to be completed in early 2020. There will be a meeting next week to create a plan of action for works to the castle in 2021.

*Continued on next page*

On planning matters, there were no planning applications for December within the Parish.

Unfortunately, the playground fence has decayed and the Council agreed to CLOSE the whole playground until we can do repairs to avoid a risk of the fence falling on a user.

The Council agreed three new policies covering health and safety, safeguarding and how long to keep records. None of these are exciting reads but if followed properly do help ensure residents are safe and we are legal in what we do.

The Council has let a new three year contract for cutting the grass at God's Acre (older part).

**The next Council meeting will be on the 8th February 2021 at 7pm via Zoom. The Public is welcome to attend and participate in the public half hour at the start of the Council meeting. Details will be posted on the website & on Facebook. For further information please contact the Clerk Michelle Harrington, e-mail [Corfecastlepc@aol.com](mailto:Corfecastlepc@aol.com) – 34 Egmont Road, Poole Dorset BH16 5BZ, or telephone 01202 670105. Full minutes of the meetings are available on the Website [www.corfecastlepc.org.uk](http://www.corfecastlepc.org.uk) or a postal copy can be requested through the Clerk.**

**Don't forget to follow us on Facebook, for all the latest updates at <https://www.facebook.com/CorfeCastlePC>**



*Photograph by Gwenda Yeomans*



The December and January Zoom meetings for 'Aquarius' members, the ladies club based in Corfe Castle, were both very entertaining and informative. In December we learned how to make Christmas garlands and many of the fun Covid Christmas rhymes written by the members were aired, to great hilarity. In January our well attended meeting was an immensely interesting presentation by Lorraine Love, a Medical Herbalist based in Swanage. Apart from discovering how she used a combination of medical science with a good knowledge of plants and herbs she told us how this was all further enhanced with healthy nutrition. She also gave us some useful advice about preparing ourselves in readiness for our anti Covid vaccinations. This included increasing our vitamin D, K and C levels, reducing our sugar and alcohol intake for the 3 weeks prior to the jab and making sure we had plenty of fresh air, exercise and good sleep!

The Committee has stepped up the regular phone calls to members to check on their well being. I am glad to say there have been only a few folk that have encountered Covid-19 personally. Hopefully with the arrival of the vaccine in Purbeck this should diminish further. Several members have offered their services of help at the Wareham Hospital vaccine hub.

As to our satellite groups; the Book Group has been held again on Zoom and before this latest lockdown the Strollers and Walking Groups had been continuing their monthly activity but in very sensibly controlled ways. The Sewing Group has launched our Community Project making Twiddle Blankets for people with dementia, having found some outlets for taking them as soon as they are finished. Members are making good progress in knitting, crocheting and sewing 8 inch squares that are needed to combine into the 1 metre square blankets. Some very interesting ideas and motifs have been added to help engage the recipients and give them things to occupy their hands usefully!

Our Zoom meeting on February 2nd will be on 'Home Computer Help' which might enable members to feel more inclined to join our virtual meetings and on March 2nd we have our AGM to be followed by a fun on line Charades Activity. We are adding an 'Aquarius Spring Watch' few minutes to these sessions to record things we have seen in our gardens or on our walks, that might lift everyone's spirits a little.

We always are happy for occasional guests to our meetings and these include men!!! So just use the contact below if wishing to join at any time.

If you are interested in joining us in the future please contact me on **01929 480007**

**CHRISTINE KEMP (Aquarius Joint Chair)**





**ALCOHOLICS ANONYMOUS®** is a fellowship of men and women who share their experience, strength and hope with each other that they may solve their common problem and help others to recover from alcoholism. ... Our primary purpose is to stay sober and help other **alcoholics** to achieve sobriety.

This is a very unusual time. It is stressful for many people in many new ways. Some people turn to alcohol to help them cope and get through it. This can be more of a danger than a help to some of us. If you think you have a problem with alcohol we can help:

**IF DRINK IS COSTING YOU MORE THAN MONEY**  
then we can help you. Please telephone our free Helpline today:

**0800 917 7650**



*Photograph by Gwenda Yeomans*



**DOMESTIC ABUSE  
CAN  
AFFECT ANYONE**

**WE ARE HERE TO HELP:**

**YOU FIRST** (Dorset Council)

**0800 032 5204**

**OUTREACH (POOLE-BOURNEMOUTH)**

**01202 710 777**

**WOMEN'S AID**

email – [helpline@womensaid.org.uk](mailto:helpline@womensaid.org.uk)

**24HR NATIONAL DOMESTIC ABUSE -  
HELPLINE 0808 2000 247**

**DORSET POLICE** in an emergency **CALL 999**  
or go to

[www.dorset.police.uk/abuse-help](http://www.dorset.police.uk/abuse-help)

# LOCAL SHOPS, RESTAURANTS, AND BUSINESSES SAY: "WE'RE STILL HERE FOR YOU"

Because we are now in National Lockdown 3, these and many other shops, and businesses etc, are open under government's stiffer rules, Some are continuing to offer special services, allowing residents to phone with their orders, pay over phone, and then either collect at an agreed time and in some cases, Free Delivery is still offered

**So, still worth trying those listed below, if you require their help**

**BALLARD DOWN STORES - 10 Redcliffe Rd, North Swanage** - Fresh fruit/veg - newsagents, drinks, frozen foods - much more

**BUDGENS SUPERMARKET Station Rd** - baked, fresh, packaged goods **01929 422478**  
*(order by phone, pay over phone, can be picked up from store with assistance)*

**BURT'S BITS, 11 Station Rd, Swanage** - Household goods and much more

**CHOCOCO** - chocolates and sweet treats **01929 408288**

**COSTCUTTERS - 208 High St, Swanage** - Fresh fruit/veg, butchers, frozen goods, general store, newsagents and much more

**COUNTRY FOODS, 37 Station Rd** - Shop open Mon-Sat 9am-4pm. **07789 289289**  
**THURS ONLY FREE DELIVERY** (Orders over £25) to Swanage area only

**COURT HILL STORES** - Ordering & accept payment for goods on phone **01929 424796**

**FOLEYS GARAGE SPAR SHOP HX** - Grocery Orders taken 10am-12noon **FREE DELIVERY**  
to: HX, Corfe, Langton, Kingston, Swanage, Studland **01929 480097 to order**

**MASALA INDIAN CUISINE** - Indian takeaway offering delivery website **01929 427299**  
[www.masalaswanage.co.uk](http://www.masalaswanage.co.uk)

**McCOLLS - 6 Institute Rd, Swanage** - Newsagents, food, and much more

**JJ MOORES BUTCHERS** - Meat, frozen ready meals, fresh fruit & veg **01929 424891**

**NIXONS HOME HARDWARE, - Station Rd, Swanage** - DIY store - many goods

**PET-LUV** - Pet food, fish food, rabbit food, much more **FREE DELIVERY 01929 426227**

**PURBECK VALET** - Dry cleaners & launderette - collection/del.service **01929 424900**

**THE SALT PIG** - Butchers, ready meals, eggs, veg, fish (Tel: orders) **01929 423616**

**WH SMITH 5 Station Rd, Swanage** - Newsagents and much more

**SWANAGE BAY FISH** - Wet fish and shellfish **01929 422288**

**SWANAGE NEWS 47 Station Rd** - Newsagents, books, art+crafts, etc

**SWANAGE & PURBECK TAXIS** - **07969 927424**

*(Pick up and deliver grocery orders - order and pay directly from supplier by phone then phone our taxi company)*



**SWANAGE COMMUNITY CORONAVIRUS INFORMATION WEBPAGE:**  
<https://www.swanage.gov.uk/Community-information.aspx>