

SWANAGE AREA FORUM

INCLUDING SURROUNDING VILLAGES

NEWSLETTER

OCTOBER 2020 - No. 6



Welcome to the October Newsletter of the Swanage Area Forum and The Swanage and Purbeck Development Trust.

With winter approaching, new challenges relating to the latest upsurge in the Covid-19 pandemic face our local communities.

Not only do we have to deal with the direct health issues and the impacts on our health and social care services, but also the economic problems that many people, particularly younger working families, could well have to deal with. The economic strain on many organisations and businesses and their many local employees, can have dramatic effects on their physical health and mental well-being along with other social issues that can result.

You can read in the newsletter how many of our local organisations have been involved during the summer, or plan to be operating this coming winter, so please keep yourself informed of all the changes to services that are going on around you and please continue to support as many local businesses, clubs, organisations, associations and charities as possible, for all our sakes as well as your own.

Mel Norris, Chair Swanage Area Forum and Swanage & Purbeck Development Trustee

melvyn.norris@talktalkbusiness.net



Photograph by Gwenda Yeomans



Swanage & Purbeck Development Trust

At the Swanage and Purbeck Development Trust, we are committed to taking steps to foster the wellbeing of Swanage residents. We were, therefore, very concerned to hear about the possible loss of the Swanage and Purbeck Paramedic Car earlier this year.

We very much support the Car continuing to be based in Swanage, and feel we have a compelling case to keep the Car – we need it!

The Swanage and Purbeck Ambulance Car + Paramedic:

i) provides a rapid response (as nearer and faster) to save life in emergency pending arrival of the ambulance

ii) treats the 50% of patients who do not need to go to hospital at the scene, avoiding unnecessary journeys to Poole, and protecting hospital resources

iii) provides a replacement service when the Swanage Minor Injuries Unit is closed (8pm - 8am).

iv) supports Purbeck GP home visits, helping to ensure that these are covered. Indeed we believe that the Purbeck GP's are open to looking at making a contribution towards retaining the Ambulance Car.

It is a matter of life and death for us to retain this essential service.

The need for the Car to stay in Swanage can only be reinforced by the plans to move our A&E, Maternity and Children's care from Poole Hospital to Bournemouth Hospital – a long way for us to go!

We see that the **"Save Swanage Ambulance Car"** petition started by Melvyn Norris is approaching 3,800 signatures, and we understand that Mel has had a letter from Dorset Clinical Commissioning Group (DCCG) suggesting that there will be consultation with residents about our needs. However, the Town Council has, to date, been unable to obtain confirmation from DCCG that residents will be consulted before any decision is taken. So there is anxiety, from month to month, that the Paramedic Car could be withdrawn.

We want to make a public statement that we wholly support the retention of the Swanage and Purbeck Paramedic + Car in the vital interest of the future health and wellbeing of Swanage and Purbeck residents.

We urge members of the community who haven't already done so to add their name to the Ambulance Car petition, by going to -

<https://you.38degrees.org.uk/petitions/save-swanage-ambulance-car>

Please sign and share





URGENT LOCAL HEALTH CONCERNS

THE CASE FOR DAYTIME 'A&E LOCAL' AT POOLE AND NEWBORN INTENSIVE CARE AT DORCHESTER

It looks as though the community's long fight to keep Poole Hospital A&E and Specialist Care Maternity and Children's Units has been ignored, and, over the next few years, these vital services are set to disappear from Poole.

Despite thousands of petitions from anxious communities all over Purbeck and the villages to try to influence Dorset Clinical Commissioning Group, our voices do not appear to have been taken into account when the decisions were made to move Accident & Emergency, Children's and Maternity care, including newborn, intensive and high dependency care, to Bournemouth Hospital. It is felt by many people in our communities this was a foregone conclusion, whatever data and statistics were provided to prove it was not safe practice for patients of all ages.

The Clinical evidence is clear - longer journeys could be life-threatening to patients facing trauma, medical or maternity emergency, particularly from Swanage and the villages - probably the longest cul-de-sac in Dorset. These journeys increase the risk of loss of life, and of long-term medical complications. We hope that Dorset CCG will now consider how these risks can be mitigated.

THERE'S STILL TIME

There is now growing support for the Dorset CCG to consider, as a matter of urgency, the 'possible viable option' suggested by the Secretary of State: for Poole Hospital to have "A&E Local" - a full A&E for at least 16 hours daily. Purbeck is a diverse area, economically dependent on tourism for its livelihood, and is an increasingly popular holiday destination for more than a million tourists, particularly at peak holiday seasons. Nose-to-tail traffic in both directions means that ambulances will have impossibly long journeys, sometimes just to get here, and then to take patients to either Dorchester or Bournemouth Hospitals. In the event of serious accidents, or urgent medical cases, of children or adults needing immediate care and treatment, this is simply not safe practice. It should also be noted that the Studland/Sandbanks Ferry closes at 11pm even during the heavily congested summer holiday period, leaving only the one main road to and from Swanage as the only access for emergency services overnight.

A&E Local at Poole would at least address concerns about emergency medical and trauma journey times during the day, when the traffic is at its worst. Although it not acceptable for Purbeck mums-to-be to have to travel further than they do now, if newborn intensive and high dependency care were reinstated at Dorchester, this would at least mean that any mums delivering under 32 weeks would not have to try to get to Bournemouth Hospital.

So, as it will take a few years for the A&E, Maternity and Children's departments to move from Poole to Bournemouth Hospital, we have time to prepare and build a case for A&E Local at Poole and Newborn Intensive and High Dependency care at Dorchester.

Co-ordinator of **Defend Dorset NHS**, *Debbie Monkhouse*



The Swanage Medical Practice

SWANAGE MEDICAL PRACTICE NEWS - OCTOBER

We are now entering Covid19 round two and we wait to see what damage will be inflicted, with further National measures just announced.

The country has had 15,000 new cases per day for the last week. At the peak for three weeks in April we only had 1,500 per day with a very tragic 1,000 deaths per day, necessitating a National Lockdown. Deaths are starting to rise and are often delayed but are still less than a tenth of the April figure, at about 80 per day.

It is impossible to predict what's coming but NOW is the time for all to review their activities so as to minimise the spread in Swanage, protect the vulnerable, keep the local economy/education going and enable Swanage Medical Practice to maintain the preventative, routine and urgent care that is needed.

Dorset and Swanage are doing better than other parts of England, at 24 rather than 118 cases per 100,000, but this is already 8 times higher than the August 3 and 9 cases per 100,000.

We have already seen cases in Swanage with schools having to shut and Practice staff having to isolate due to symptomatic contacts.

We have been seeing an increasing number of patients at the surgery and our appointment system is increasingly under pressure.

During a recent five working days period, these are just some of the things the team have dealt with for you:

- **600 tasks – internal messages/queries from patients/prescription changes**
- **1102 direct patient contacts such as tel calls, home visits, face to face appointments, E-Consults.**
- **1952 Prescriptions issued**
- **1431 Pathology results received/checked and actioned by our GPs**
- **1076 Letters, reports, general clinical correspondence processed and actioned**

We are still under guidance that all GP consultations should be by phone, online or video consultation in the first instance. Our treatment room appointments are by telephone where possible i.e. Asthma reviews, however, we are seeing face to face patients for blood tests, dressings etc. We ask screening questions before patients enter the building, we ask that patients maintain 2m distance while in the building wear masks and all staff seeing patients will be wearing appropriate PPE. This ensures that your risk of passing on or catching the virus at the surgery is kept to an absolute minimum.

We have recently said goodbye to Dr Jeremy Munday who has retired, and Dr Ciara Murphy leaves us to return to Ireland at the end of October. We thank them for their many years of service to our patients. Both will very much be missed by patients and colleagues.

We have been actively trying to recruit to find a Doctor or other suitable replacements, but the local and National GP recruitment crisis continues to thwart us. For the time being patients will be added to existing doctor lists. This will mean that instead of each of us looking after 190 patients per half day we will have 270, increasing our workload significantly.

For these reasons the way we provide care has changed, with your own registered GP who will be overseeing your care from another health care professional such as an Advanced Nurse Practitioner and Primary Care Paramedic as we expand our clinical team.

Our **eConsult** system is being increasingly used and we would recommend this as the first point of contact for your GP at the surgery (see our website for details).



The Swanage Medical Practice

Continued from previous page

For replies to **eConsults** (passing on other information such as results or asking patients to contact us) we are increasingly sending text messages. These may come with the opportunity to reply-back to us with any concerns, a photo such as of a rash, your blood pressure or weight. We intend to increase this method significantly so please ensure we have your up-to-date mobile phone number, especially if submitting an **eConsult**. If you do not want your mobile used for these messages, please let us know as our system will respect this.

Our Urgent Sit and Wait surgery is still in operation, but all patients are assessed as far as possible by phone with photos or video consultations. This will now be called the **Medically Urgent Telephone (Sit & Wait) Service** and has been amended, to ensure we have enough capacity to appropriately and safely assess all those with an urgent problem. These patients will be assessed by our Advanced Nurse Practitioners, Primary Care Paramedic, Clinical Pharmacist or GP depending on the condition. When we have reached capacity for that day, patients will be asked to consider alternatives, such as an **eConsult** or to ring back when the next session starts. In cases of suspected medical urgency staff can seek guidance from the Duty Doctor for immediate management.

Swanage Medical Practice is a member of the **Purbeck Community Network (PCN)**. We already use them to coordinate home visits by the Purbeck Paramedic car and Community Matrons. They coordinate the Increasing provision of Pharmacists across Purbeck Practices and provide **Social Prescribers** who guide patients. Please see our website about how to contact them.

In the coming weeks, a new initiative by the PCN to improve access to general practice across the Purbeck area will start. Each day there will be additional appointments at one of the practices in Purbeck, this might be a telephone consultation or to be seen by a GP and **may mean you will need to travel to a different surgery in Purbeck to be seen**. This should particularly help when appointments in our surgery are in short supply.

Early cancer detection is particularly important as uptake of care was so difficult during lockdown and may well come under further strain. So, if you have had an invitation for any screening programmes i.e. bowel screening, mammography or cervical smear test please don't overlook it. It may be that nationally we lose as many lives from missed cancers as we have from Covid19.

To be clear, if you have any symptoms that may indicate cancer send us an **eConsult or book a telephone consultation as soon as possible. There is a 2 week maximum wait referral service that remains fully operational for any symptoms that suggest even a 3 % chance of cancer.**

Once again we are in challenging times and I would like to thank all the Practice staff for their ongoing dedication to your care, for all the encouragement, support and thanks our patients have shown us and I encourage everyone to remember:

“HANDS (wash), FACE (mask), SPACE (2m)”

With kind regards - Dr Jason Clark, Senior Partner

Swanage Medical Practice website: www.swanagemedical.org.uk



Public Health
Dorset



Dorset
Council

PREVENT A LOCAL LOCKDOWN

We have seen an increase of positive COVID-19 cases across Dorset. To help stop the spread and to help prevent going into a local lockdown please:

- Keep your distance and avoid physical contact with anyone you don't live with
- If you are self-isolating as a close contact of a positive case **YOU MUST complete your 14-day isolation period even if you get a negative test result as you could still develop symptoms**
- If you have any symptoms, however mild, you and your household must self-isolate
- Wear a face covering in all enclosed public spaces
- Wash your hands regularly

To help stop the spread and to help prevent going into a local lockdown please:

Self-isolate if asked to

There are a number of reasons why you might need to self-isolate. Here are the scenarios when you need to self-isolate.

- You have any symptoms of Coronavirus - **a high temperature, a new continuous cough or a loss or change to your sense of smell or taste**
- You've tested positive for Coronavirus - this means you HAVE Coronavirus
- You live with someone who has symptoms or tested positive
- Someone in your support bubble has symptoms or tested positive
- **You're told to self-isolate by NHS Test and Trace or the NHS COVID-19 app**
- You arrive in the UK from a country with a high Coronavirus risk see - **GOV.UK: how to self-isolate when you travel to the UK**

You need to stay at home for the full isolation period.

Got Symptoms? OR Tested Positive? You MUST self-isolate for 10 days

You are not alone

Financial worries or uncertainty about the future can have a big impact on your mental health. If you are struggling to cope, YOU ARE NOT ALONE.

Talking to someone about what you are going through and how you are feeling can help.

CONNECTION is Dorset's 24/7 mental health helpline. It is available to people of all ages who are experiencing mental health problems and need some support.

You can also speak to CONNECTION for advice if you're worried about someone else's mental health.

CONNECTION's number – 0300 123 5440 – offers 24/7 telephone access to mental health advice and support.

You do not need to be known by our services, and can also phone for support and advice about a friend or family member experiencing poor mental health. This number will charge at your local rate but CONNECTION can also be accessed via phoning 111 for free.

Find out about COVID-19 in Dorset

Residents of the Dorset Council area are invited to hear about what is happening in the county in relation to COVID-19 and also have a chance to ask questions they may have.

Please send questions about COVID and the local response in advance by emailing

comms@dorsetcouncil.gov.uk

DO IT for Dorset

Dorset COVID public update LIVE

Thursday 22 October, 5pm

Watch or listen on the council website

COVID: we all have a part to play





"HELLO" FROM THE FRIENDS OF WAREHAM HOSPITAL

I am pleased to report that The Wareham Friends were able to hold their annual AGM via Zoom in mid-September 2020.

Whilst numbers attending were small it was good to reflect and report on work over the last year both within the Hospital and Community Services and amongst the Friends' Committee. The meeting also gave me an opportunity to thank everyone involved for their support during this "strange" year. Minutes of the AGM will be available to Friends' members, upon request, through Wareham Hospital.

We were delighted to welcome the Mayor Cllr. Kirk to the meeting and were grateful that she wishes to become more involved with the work of the Wareham Friends at such an important time for local health and social care services.

Sadly, I reported on the recent death of one of our committee members Peter Booth. Peter vehemently supported Wareham Hospital and Purbeck services and we will miss him very much both as a friend and a colleague. We have also said a sad farewell to Mary Read, wife of our Membership Secretary Barry. Mary had spent many weeks within Wareham Hospital over the years fighting a debilitating illness but always appreciating, with a smile, the wonderful care she received from the dedicated Wareham team; Mary was one of our strongest advocates and supporters and an inspiration to us all.

Finally, I was able to report that we had received positive news from both Dorset Council and Dorset Healthcare regarding the proposed Purbeck Hub at the old Wareham Middle School site. Commitment remains strong for the new Hub which will support the Integrated care we receive throughout the local area. The Friends have actively supported this development having lost In-patient beds at Wareham Hospital two years ago.

We would welcome new members to our Friends Group and any donations to support Purbeck staff and community services would be gratefully received; these can be made through Wareham Hospital Friends, Wareham Hospital, Streche Road, Wareham BH20 4RN
With kindest wishes,

MAGGIE HARDY, FRIENDS CHAIR
Charity number 252073



Dorset COVID PH Update

This week, an amber alert has been issued through the Dorset COVID-19 Health Protection Board due to the rising number of cases in the area.

Following the national announcement on local COVID alert levels earlier this week, both Dorset Council and Bournemouth, Christchurch and Poole (BCP) Council areas are currently placed in the medium category (tier 1).

Between 4 and 10 October, there were 182 confirmed positive cases in the Dorset Council area.

Dorset COVID public update – LIVE!

As the number of cases of COVID in Dorset is on the rise, Dorset Council will be broadcasting live online from 5pm on Thursday, 22 October, to give the latest update on COVID in Dorset and to answer residents' questions. Sam Crowe, Director of Public Health Dorset, and Matt Prosser, Chief Executive of Dorset Council, will host the event. Sam Crowe will give a briefing on the latest number and rate of COVID-19 cases in Dorset, and the arrangements in place to mitigate spread of the virus. Matt Prosser will give details of how schools, care homes and council services are responding to the situation and planning for the coming weeks.

Residents can submit their questions about COVID and the local response in advance by emailing comms@dorsetcouncil.gov.uk. The briefing will also be recorded and available via the council's YouTube channel afterwards (search for **DorsetCouncilUK** on YouTube).

Children in Dorset set to benefit from music grant

[Dorset Music Service](#) is celebrating £90K of funding from Youth Music to give better access to music for children, young people - and babies this year. The funding is shared across three local organisations: **The Arts Development Company, Dorchester Arts** and **Dorset Music Service**. All will use the funds to encourage and support different projects which include online music clubs for babies, lessons for children and young people and better access to music education online.

Dorset Music Service

Email: dorsetmusicservice@dorsetcouncil.gov.uk

Tel: **01305 225770**

[Full contact details for Dorset Music Service](#)



FRIENDS OF SWANAGE HOSPITAL

REPORTS FROM OUR ANNUAL NEWSLETTER 2020

Report from the Chair

I am delighted to report that the first two phases of our major project at the hospital have been completed. Under the ward we now have an attractive and comfortable en suite bedsitting room for the relatives of palliative care patients, plus a meeting room and staff room. It is a wonderful use of the unused space and will prove to be a major asset for the hospital. Storage areas have also been created, old ones refurbished and the lift is in place.



New relative-stay Room



New Kitchen area

Our new car Park is finished, and will open very soon, but at the moment it is being used for the machinery creating the hard landscaping for the patient garden. The planting will be done in the autumn and spring and we are simply thrilled that money donated for the garden will at last be spent.

As a result of the pandemic a lot of the services at the hospital had to close: no outpatient clinics until very recently, no physio on site, no day surgery and MIU was by appointment only. But this did give us the opportunity to fit in a small project centered around the day room and kitchen. The area has had a complete make-over by taking down the kitchen wall and creating a coffee-bar style area. Before they return home patients are assessed by an occupational therapist and making a cup of tea in the kitchen is an important part of the process. However, it won't just be an assessment area but will also be used for dining and social activities to encourage patient mobility. Next year our major project will be the redecoration of the ward and the upgrading of the lighting and fitments in that area plus the purchase of new televisions for each bed.

September 26th was the 125th anniversary of the opening of our cherished hospital. We were hoping to mark this with a major event: a grand, formal opening of the new facilities for everyone to admire but sadly that will have to wait. Instead Matron organised a special celebration for patients and staff.

The Friends are very mindful of the enormous strain put on our hospital staff during this pandemic and have offered support throughout this dreadful time.

Jan Turnbull

Matron's Report

As I am sure everyone is aware we have been very busy working to ensure a safe environment for patients and staff alike.

Stanley Purser Ward was hit particularly hard by the virus and I am pleased to say that we have all recovered well. It must be acknowledged the contribution made by the nursing staff from other departments that have worked on the ward whilst their departments were closed. We have now re-introduced visiting to the ward albeit within COVID guidelines. We are also working very closely with our therapy colleagues to ensure that patients are discharged from hospital as quickly as possible.

Our housekeeping team has done a fantastic job at ensuring the cleanliness of our hospital is of the highest standard.

MIU has continued to provide the service it is renowned for but with a new way of working: telephone triaging before being offered an appointment has enabled the staff to see patients without long waits and with appropriate conditions. Numbers are increasing with the easing of lockdown.

Radiology, from day 1 of lockdown, have been seeing patients face to face, initially only MIU referrals, urgent X-ray and Ultrasound, but latterly we are now seeing routine X-ray and Ultrasound. This follows the department achieving the Quality Standard for imaging accreditation in February 2020 after two years of hard work and preparation. In our Outpatient department, as I'm sure everyone will appreciate we have a large backlog of patients and with all the adaptations in place the number of patients we can see in one clinic is drastically reduced. Our Day Surgery and Endoscopy service is currently suspended and we are in close contact with the relevant professional bodies for guidance as to when these services can resume.

A further development from the COVID outbreak to manage the patient waiting times is working with Poole Hospital to consolidate all the referrals that have been suspended; the aim of this is to provide a more equal and joined up service. This has involved the transfer of the patient information to Poole and a close working relationship with the acute and community providers of healthcare to offer the patients the quickest resolution. Those patients still waiting for their interventions have been informed of this and we are working closely with the Primary Care Network to ensure no one falls through the net.

As I've said we have been very busy looking at how we can resume services within Swanage and; we can now display our certificates verifying that we have made all necessary COVID adaptations.

Even with the changes in place we must ensure we stay vigilant and I need to remind everyone that if you are displaying any symptoms of the virus please do not come to the hospital but contact 111 for guidance.

Lastly I would like to say Thank you for all the support offered to us at Swanage Hospital from the Friends of the Hospital and the wider community for the treats and offers of help.

Donna Kiss

Treasurer's Report

I am delighted to report a huge loss on the year as it means we spent well over half a million pounds on the hospital in this financial year. The even better news is that we will spend even more in the coming financial year. The Chairman has told you about our major building works which account for the bulk of our spending (over a million pounds on those alone) but we have also committed another £200,000 in upgrading work for the ward and surrounding areas which includes new communication set up for every bed which will give every patient free access to television, radio and broadband (which will allow virtual visits to take place). Each bed area will cost thousands of pounds to rewire and the new televisions, radio equipment and i-pads will cost at least one thousand pounds per bed. I am sometimes asked if there is a small project that a group of people can adopt and that is one you could put your name to. When the work is finished it will upgrade the facilities for the next 15 years and ensure that the hospital is up to date with all the current regulations.

Thank you all for your continuing financial support at such a difficult time. We have had diverse fundraising from Karen G, who gave us the proceeds of a CD she recorded during lockdown, and Susan Bond, who made masks and donated the proceeds and not forgetting all of you who sponsored my walk for the hospital. I have continued walking, if not so far each day, and have now walked 1625 miles this year and a few brave souls have offered a bit more sponsorship if I make it to 2000 miles.



Sister Caroline Johnson receives the cheque from Karen G

As we weren't able to have our autumn fete this year if anyone has any other bright ideas for fundraising then please let us know c/o the hospital.

We are still in a sound financial position and will continue to spend the money you give us carefully but we are aware that the Covid pandemic is draining the country's resources and we need to be in a strong position to help out if our hospital needs urgent help. So please continue to give your support.

As we will not be able to have an AGM this year our full accounts will be posted on the Friends website and our financial statement can always be found on the Charity Commission website by searching for charity number 273058.

Stay well.

Terry Buck

Membership Report

We are hugely grateful for all the support from the Friends of Swanage Hospital. Over the last few difficult months, the Friends have supported the hospital by donating monies to our Treasurer's 1,000 mile sponsored walk and by making button bands, which ensure that PPE can be more comfortably worn for long periods of time. We put out an appeal to members and so far, a massive total of 862 button bands have been made and received. Thank you so much to everyone who has made these and sent these to Pat Cooper at the hospital. It is a fantastic response and we are very grateful for all the love and care which has gone into making these.

Our existing members continue to be incredibly supportive of the hospital, but we have been surprised (and rather disappointed) that during the pandemic, with the work of the NHS and hospitals being highlighted, that we have not seen an upturn in membership. The Friends of Swanage Hospital use all the donations and monies that we receive to help support the hospital and staff so that we can try and offer the best facilities, up-to-date equipment and a wide range of services at the hospital for the whole community. We also try and support our wonderful staff at the hospital. If you are reading this and are not a member, please think about becoming one. The suggested minimum annual subscription is £5 and the numbers of members are as important to us as the monies which come in. Please support your local hospital by becoming a Friend and ask your friends and family to join too. It would be lovely to be able to increase our membership and also to see more younger people join. By becoming a member, you are showing your support for the hospital and its future, you are not committing yourself to physically doing anything.

If you would like to become a member, the 'How You Can Help' page on our hospital website shows you how to do so. You can download a form or donate securely online. Using the secure online donation is our preferred method, as any Gift Aid is automatically claimed and it makes the administration easier for Pete and I as the volunteer Membership Secretaries.

During the pandemic, we have sent several emails to members sending them Covid-19 Updates, appeals for button bands and details and updates on Terry's sponsored walk. Emails like this are an easy and fantastic way of ensuring we keep our members up-to-date and saves us a lot of printing and postage costs for the AGM invitations. If you are a member, have an email address and do not currently receive information by email from us, please consider providing your email address so that we can send all correspondence to you by email. Our email address is membership@friendsofswanagehospital.org.uk

Thank you so much for your continued support of Swanage Hospital.

Kate Spurling and Pete Smith



PHOTO: Progress in new Patient Garden at Swanage Hospital

Swanage Hospital 125th Anniversary 26th September 2020



The Bishop of Salisbury formally opened the new hospital on 26th September 1895. Sadly, the celebrations of the 125th anniversary of the opening of our hospital had to be restricted to just patients and staff. However, some of the staff dressed up and there were presents and a cake for patients provided by the Friends. Also a wonderful booklet was produced by the Administration Manager Nick Acres about the history of the hospital and was given to the patients and staff - see this on our website:

<https://www.friendsofswanagehospital.org.uk/>



Staff dressed in suitable period clothes, celebrating our 125th anniversary, seen outside Swanage Hospital on the 26th September 2020

COMMUNITY HOUSING PROJECT

Public Meeting via a video conferencing platform Wednesday 18th November 2020 7.30 p.m. – 9.00 p.m.

At the invitation of The Swanage Community Housing Steering Group please join us on 18th November, via a video conferencing platform, to find out more about Community Land Trusts.

The aim of a CLT is to work with the local community to deliver genuinely affordable homes, that are for local people who otherwise may be unable to live in the town that they were brought up in or work in. This helps to build a sustainable community for future generations.

The Swanage Community Housing Steering Group is looking for inspiring, community minded people to drive the project forward and to realise the potential of affordable housing in Swanage.

Join us online and find out how you can become involved in an exciting local project. There will be an opportunity to ask questions, or raise queries, regarding the proposed trust and the aims of the project.

To book your place at the event please use the following link:

www.eventbrite.co.uk/e/swanage-community-housing-project-public-meeting-tickets-124678309179

If you would like more information please email:

admin@swanage.gov.uk

We look forward to welcoming you.

**Councillor Mike Bonfield
(Town Mayor)
and Mr Robin Sutcliffe, Chair
(Swanage Community Housing Steering Group)**

**Town Hall
High Street
Swanage
BH19 2NZ**

01929 423636 www.swanage.gov.uk



A message from the Mayor of Swanage, Councillor Mike Bonfield

I sit here thinking about where we have been and where are we going - the last six months have been extremely challenging for so many. We must, as a community, carry on supporting those that are vulnerable, worried and lonely. We are so lucky to have those in our community that have been so helpful and supportive during this very trying time.

Back in April we were all hoping that by now we would be moving forward, but unfortunately this does not seem to be the case. We have been so lucky in the Purbeck area, but there has been a lot of anxiety due to the numbers visiting. It seems that staycations have brought an increase of visitors to our wonderful area, and who can blame them?

The latest government guidelines have just been announced. At the present time the Dorset area is still one of the lowest areas of infection. As long as we all carry on with looking after ourselves and those close to us, I am sure that this pandemic can be brought under some form of control so that we can all start to do the things that we were used to, visit our family, friends and neighbours and also start the clubs and groups that are so important for the health and wellbeing of so many of our residents.

Looking forward it is noticeable that Swanage has been quieter for the last couple of weeks. We must all continue to support our local businesses as much as we can, it is going to be a long hard winter but I am sure that with your support they can survive so that when we come out of this they are all still around.

Your Councillors and Town Council are still working hard and projects planned for this winter include the refurbishment of the children's play areas at the Rec and Days Park, resurfacing of main beach car park and many smaller projects. The Council is also developing its environmental action plan and working with many other organisations to improve the health and wellbeing of our community, including a project to deliver affordable housing for local people.

So, although we are having to manage the immediate crisis, lots of work is also being done to ensure that Swanage thrives in the future.

Please keep safe.

Cllr Mike Bonfield

information on Town Council services is available on the council's website www.swanage.gov.uk and Facebook Page:

<https://www.facebook.com/pg/swanagetowncouncil/posts/>



ARE YOU READY FOR MORE ?

What a fantastic Covid 19 response the people of Swanage and the Purbeck area have made this year. Well done to everyone. So, can we build on this momentum and see if you can help the Swanage and Purbeck charities and voluntary organisations?

Can you walk a dog?

Can you clear the beach of litter?

Can you serve people in a shop?

Can you drive a Car?

Can you do someone's food shopping?

The Swanage Volunteer Bureau (SVB) has not been in the library on Friday's since March, so like everyone else we have gone underground and become virtual. We have updated our volunteering list. The SVB have double-checked to make sure that the charities and voluntary organisations are OK and willing to accept volunteers. Please note that many details have changed and some are currently not fully operational because of Covid.

WHAT DO YOU DO NEXT?

Log on to the following link. <https://www.sandp-dt.org.uk/swanage-volunteer-bureau> and click on the "view volunteering opportunities". Here you will find all the details of what these groups are doing and what they would like from you as a volunteer. There are many opportunities for you to review. Some groups are happy with one hour a month, others would be very happy if you can help every day of the week!

There are many opportunities for you to review. Some groups are happy with one hour a month, others would be very happy if you can help every day of the week!

The SVB leaves it up to you to contact the organisation that appeals to you. We do not check on you or monitor how you get on. We are really like a dating agency making the initial introduction!

If you need any help or further information please contact Jeff Soulsby
jj.soulsby@gmail.com.



Swanage Connect Day Care Services

improving lives, building independence

Since the Coronavirus lockdown was forced upon the nation in March, the staff at Swanage Connect Day Centre, have adapted their way of working, by offering an emergency service for the local community in Swanage and Purbeck.

Staff have been working in the community, visiting clients in their own homes. They are offering support by taking clients for walks, shopping, picking up medication and generally responding to those that have needed help and support during these difficult times.

The Day Service has been working closely with the Purbeck Local Office, so Swanage Connect not only supports those clients that previously attended the Swanage Day Centre before closure, but also those that have needed our support, often because they live alone and have no other means of support within the local community. Or because their Carers are needing a break from caring to have a little time to themselves to 'recharge their batteries'.

This has been very different to the way in which the Swanage Connect Day Service had previously run, but it has proved to be rewarding for all clients, including those most vulnerable, and staff have embraced the transformation and taken on the challenge of change.

We have received many lovely comments from those that we are supporting in this way from within the local community. It is lovely to hear us being called 'an emergency service and a lifeline'.

SWANAGE SPECIAL AMBULANCE CAR



Remember to sign and share the petition:
<https://you.38degrees.org.uk/petitions/save-swane-ambulance-car>

TIME FOR BIG THINKING

Writing this in mid-October, the Trust have just been through its main restructure losing around 10% of its workforce through either voluntary or compulsory redundancies. The calculations that our directors made were not just around the financial impact that Covid has had on our finances to date, but also predicting further impacts of a second wave and recession to come. As cases/admissions and deaths are all rising steeply again... it looks like that second wave is here.

Which is immensely worrying for everyone – for our family and community's health as a direct result of Covid infections and all the other impacts that come through trying to prevent the spread of the disease.

Personally, I hate working from home. I find it hard to concentrate. I miss the buzz of working in an office. I miss chance conversations. I hate being surrounded by all the jobs I need to do in my tumbledown house. I miss my cycle to work (going out for the sake of it doesn't seem to have the same impact). It feels like I'm living in black and white, rather than a full on colour experience. I can function and get some satisfaction (I'm old enough to have grown up watching snooker on a black and white telly) – but it's all very numbing (but necessary).

The lone uplifting thing I have found during the past 7 months is that many people (as individuals, as members of organisations) are putting a lot of energy in trying to shape a greener, healthier Purbeck for now and whenever 'normal' returns. Visitor footfall seems to have increased around 50% post-lockdown. Lots of people have found Purbeck for the first time. They are going to want to return (like my family did after our first visit escaping London for a half term in 1982) because it's beautiful, diverse and brilliant.

The opportunity we have now is to try and work together as a whole group organisations, parishes, businesses, communities to reduce the impacts of these visits on the landscape, but also try to make each one of these visits count. A visit to Purbeck can secure our local prosperity but it can also change the world... if each one of our visitors goes home and, say, picks up a few bits of litter in their local park because they have done a 2 minute beach clean; sources local food because they did so within the Isle, or even cycled or walked more because they enjoyed that so much during their stay - that reduces their impact on the Planet. Surely no better legacy from a holiday than realising retsina should only ever be drunk in a Greek Taverna. Purbeck is Powerful. Or could be.

The jeopardy is that if we don't look to do this, the impact that more cars and footprints could have on the very landscape that attracts people here will continue to increase. And our planet continues to warm, and nature continues to decrease at accelerated pace.

Now is the time for big thinking isn't it? Going through all of this, the fear, the tragedy, the poverty, the massively reduced social contact... to face the same problems we had in 2019? The climate and ecological emergency is now. We've less time than we had last year to act. Perhaps the pause we're going through can give us the space to be creative, collective and respond accordingly.

In Swanage the best first place to get involved is via Sustainable Swanage... attend the online meetings, develop your ideas with others and play a part in the green recovery. Drop Sarah Spurling, the coordinator, an email or give her a call...

The above is supposed to be challenging and hopeful, not inducing more anxiety (apologies if it has).

Take care!

Tom Clarke



★ Welcome to Sustainable Swanage ★

A group established in Swanage as part of the town's ongoing efforts to become a more sustainable community and protect our precious environment

Our founding mission was to positively support the community of Swanage in reducing its waste, with an emphasis on plastic, but we have since expanded our work to include biodiversity and energy. We provide a link between different local organisations and groups and are working together to find solutions to issues that affect our local environment. We provide a central point of information for the community on these issues and provide a means of sharing good tips and connecting people. We are a positive group looking to the future and how we can all live more sustainably and become resilient to future stresses and challenges that we face in our community. Look forward to hearing from you...



Sarah Spurling - Project Officer

Sustainable Swanage and Litter Free Coast and Sea

<https://www.litterfreecoastandsea.co.uk/sustainable-swanage/>

Durlston News - October 2020

“Wayfarers All...”

"I tried 'stopping on' one year," said the swallow. "I had grown so fond of the place that when the time came I hung back and let the others go on without me.

"For a few weeks it was all well enough, but afterwards, O the weary length of the nights! The shivering, sunless days! The air so clammy and chill, and not an insect in an acre of it! No, it was no good; my courage broke down, and one cold, stormy night I took wing, flying well inland on account of the strong easterly gales. It was snowing hard as I beat through the passes of the great mountains; but never shall I forget the blissful feeling of the hot sun on my back as I sped down to the lakes that lay blue and placid below me, and the taste of my first fat insect!

"The past was like a bad dream as I moved southwards week by week, easily, lazily, lingering as long as I dared, but always heeding the call!"

"Why do you ever come back, then, at all?" The Water Rat demanded of the swallows jealously. "What do you find to attract you in this poor drab little country?"

"And do you think," said the swallow, "that the other call is not for us too, in its due season? The call of lush meadow-grass, wet orchards, warm, insect-haunted ponds, of browsing cattle, of haymaking, and all the farm-buildings clustering round the House of the perfect Eaves?"

From “The Wind in the Willows” by Kenneth Grahame



SWALLOWS
mosaic by
Robert Field

THE ENID ROGERS BLACK BOOK

THE NATURAL HISTORY OF DURLSTON COUNTRY PARK PART II



A SURVEY AND RECORD COLLATION OF TERRESTRIAL AND FRESHWATER ANIMALS

Editors: S.J. Morrison (EFR&EM)
Katie Black
2009

Photographs: Roe Deer (Peter Bell), Adder (Angela Webb), Red-backed Shrike (Phyl England), Toad, Painted Lady (Roy Cowley), Bloody-nose Beetle larva (Dom Greaves).

The ‘Black Book’

In 1976 the original ‘Wildlife of Durlston’ book was produced, full of details about the species found at Durlston. This was bound in black leather and became known affectionately as ‘The Black Book’

Between 2006 -2009 this was meticulously updated, (thanks in part to funding from the Friends of Durlston), going through the many years of records and data to produce ‘The Natural History of Durlston Country Park Part II’.

The information was then used as the basis of the Diversity Display in the café – the backlit glass panels which go around the walls and are engraved with (most of) the 2927 species, the names in both Latin and English (where they exist!).

‘The Black Book II’ as it is known is once more being improved, with volunteers Kathy and Keyleigh going through daily diaries and records from the last 10 years with the aim of producing a 3rd Edition, this time with a photo of every species – preferably ones taken at Durlston! The completion of this may take several lifetimes, but we will be adding sections to our website over the coming months!

Autumn Wildlife

The Wind in the Willows was the very first book I bought and I still have that treasured copy today. For me it is one of the most moving 'love letters' to Britain's countryside that I have read and the passage above is one of my favourites!

Carol Bishop Hipps described autumn as *"The mellow, messy, leaf-kicking perfect pause between the opposing miseries of summer and winter."* and autumn at Durlston is a fantastic time to explore the Park.

An early morning trek out to our western boundary may reward you with the 'clacking' or even a glimpse of a Ring Ouzel (or 'upland blackbird'), with Redpolls, Linnets, Pied Wagtails and Meadow Pipits also passing overhead.

Talk a walk around Durlston (or Swanage) late at night and listen out for the high-pitched 'seep' of migrating Redwing, travelling down from Scandinavia to enjoy our 'balmy' winter climate!

Bird migration is one of the great hidden spectacles of nature – visible migration is just a tiny tip of the iceberg! Above our heads, countless thousands of birds are massing and heading south – fine early mornings in the last week have seen the Learning Centre pond enveloped in a whirling blizzard of Swallows and House Martins, while out on the Park, numbers of Redstarts, Wheatears, Willow Warblers are starting to fill the 'departure lounge'.

More unusual sightings have included a Wryneck (an elusive rare migrant woodpecker) and a Durlston 'first' – several sightings of a Sea Eagle passing over the Park on the 11th October!

Look out for piles of purple poo while you are out walking – Blackberries are not just enjoyed by humans, but also by our Badgers, who use regular 'latrines'.

We are really pleased to be continuing our programme of Badger vaccination this year. Thanks to a band of dedicated, trained volunteers, following a week of 'pre-baiting' cage traps, we have now successfully vaccinated enough Badgers to provide our population here with immunity from TB.

We were able to 'make hay while the sun shines' and the meadows have now been cut and baled (providing winter fodder for our cows and maintaining some of the best meadows in the country). Over the next few weeks, our lovely herd of Herefords will be grazing the 'aftermaths' in the meadows, so please close gates where you see a sign asking you to do so and keep dogs under close control.



Photograph by Gwenda Yeomans



Photograph by Gwenda Yeomans

Wild Seas Exhibition

Our upcoming 'Wild Seas' exhibition, in partnership with Dorset Wildlife Trust features maps of the Dorset seabed, marine artefacts and specially commissioned underwater landscapes by artist Antonia Phillips, along with the chance to find out about new protection offered to our coast and seas.

The exhibition will be open daily from 10.30-4.30 from the 24th October – 29th November in the Fine Foundation Gallery at Durlston Castle.



Basking Shark off Portland Ledges
© DWT/Antonia Phillips



A NATIONAL PARK FOR DORSET PLANNING

Planning is in the news at present, with concerns about what proposed changes in the planning system could mean for Dorset's communities. There are particular worries about the proposed new national algorithm and what this means for the numbers of houses proposed for Dorset. How would a National Park help?

The National Planning Practice Guidance says that where a National Park shares an area with a local planning authority (in our case the Dorset Council), a local methodology may be used for calculating housing need rather than the national algorithm. So the Dorset Council in partnership with the Dorset National Park could assess the level of housing development for **all rural Dorset** that appropriately reflects local needs, taking account of household projections and economic aims.

National Parks have a duty to 'respond proactively to local housing needs' including for the homes, and especially affordable homes, that Dorset needs for local people. National Parks plan in partnership with local communities, for example through Neighbourhood Plans. So a Dorset National Park can help meet local housing needs including for truly affordable homes that can be kept available for rent to local people. For the health of Dorset's economy as well as local communities we need to retain and attract young people and to enable businesses to set up and grow.

Some Questions Answered

Another layer of bureaucracy? No. A Dorset National Park, with its duties and funding to care for our unique environment and heritage, promote health and wellbeing, and foster the economic and social wellbeing of communities, would complement and partner with the Dorset Council. The Council would retain responsibility throughout rural Dorset for most aspects of local government (such as education and social care) with the National Park being the planning authority for its own area. With a shared planning team part-funded by the National Park, the Dorset Council and National Park would work together and with communities to prepare a future joint Local Plan for rural Dorset. The AONB would be upgraded and replaced by the National Park.

Why reorganise again? Future generations will surely ask whether Dorset councillors and other stakeholders had the vision to seize the opportunities a National Park presents to benefit nature, our communities and the local economy, and help everyone address the challenges of the climate, eco and health emergencies.

Who funds a National Park? National Parks are core funded by central Government and are not a charge on residents or businesses. A National Park would bring additional resources and enable Dorset Council funds to be released to spend on other county-wide priorities.

What is the scale of the economic benefits? Reports by independent experts (on the Dorset National Park website) suggest that the direct financial and indirect economic benefits would amount to many million pounds a year. All of Dorset would benefit.

The Dorset National Park Autumn Newsletter is out now! It summarises the economic benefits, notes how the South Downs National Park is helping nature, people and the economy to recover, and reports on the health and well-being benefits National Parks offer to everyone:

<https://www.dorsetnationalpark.com/news>

The Government has committed to create new National Parks. Dorset is widely recognised as the outstanding candidate. Please support your National Park!

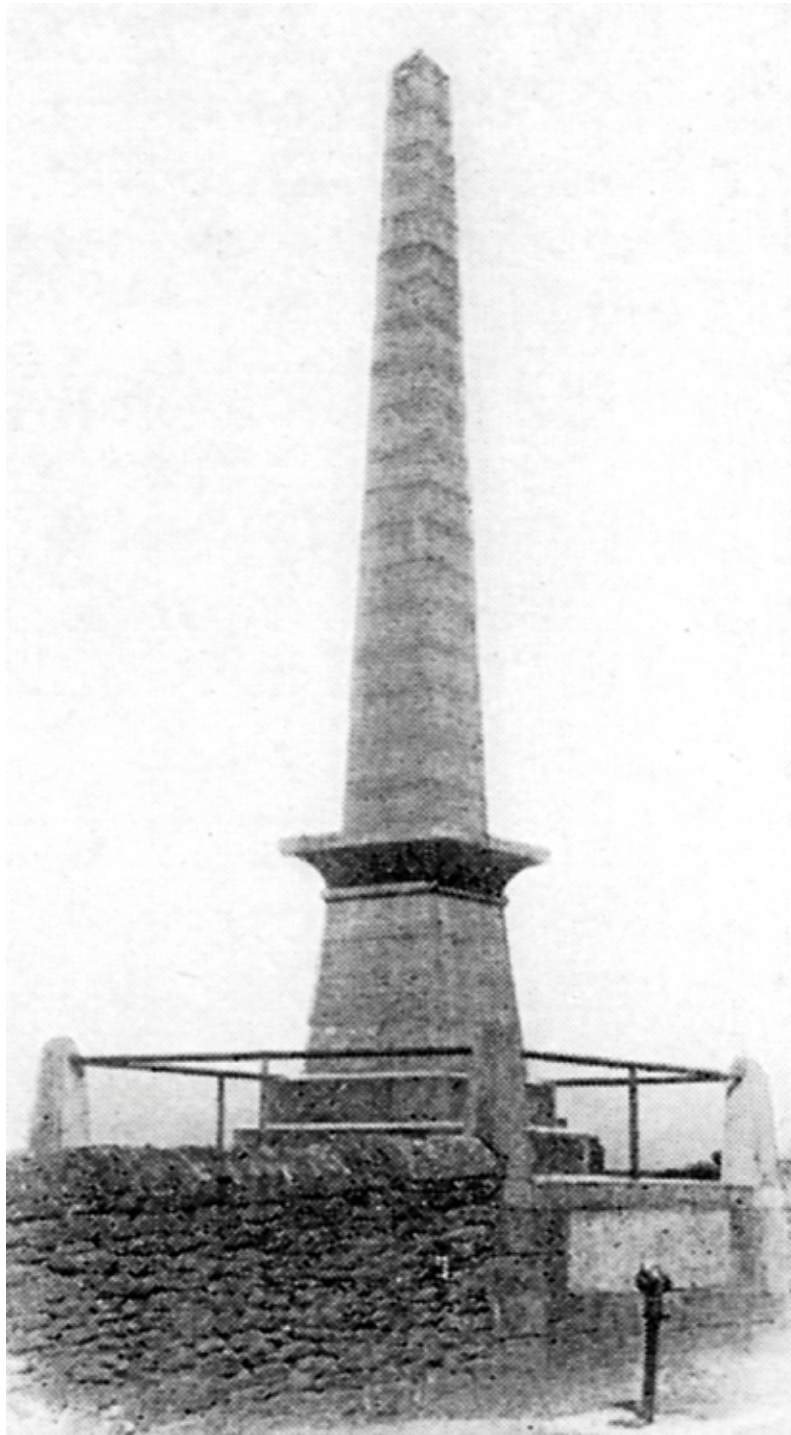
With best wishes from The Dorset National Park Team www.dorsetnationalpark.com



Website: www.swanagemuseum.org.uk

e-mail address: museumswanage@gmail.com

THE SWANAGE ALBERT MEMORIAL TO BE RE-ERECTED AFTER A FIFTY YEAR ABSENCE



After many years of effort, we were delighted when planning permission was granted on the 30th September by Dorset Council. It is hoped that it will be in position at the top end of Prince Albert Gardens by May next year. It will be close to the spot where Prince Albert landed from the Royal Yacht in Durlston Bay. In the company of Sir George Biddlecombe he climbed the zig-zag path and walked across to Peveril Point. More information can be seen in the November edition of the Purbeck Gazette - in print or on the Gazette Website

<https://www.purbeckgazette.co.uk>





THE MOWLEM THEATRE OCTOBER UPDATE

The Mowlem's reopening has been very successful so far, with the audience response in October being so positive that event screenings have been booked throughout November and December. Great care has been taken to make visiting The Mowlem under Covid conditions a pleasant experience and visitors have reported feeling safe and comfortable.

The first live stage show since March will be the return of comedy singer-songwriter Richard Digance with his one-man show on Friday 13th November, performing a selection of songs and looking back at this very strange year in his unique comic way.

Other shows coming up include live stage recordings of Matthew Bourne's *Car Man*, *The Merry Wives of Windsor* recorded live at The Globe, and Michael Ball and Alfie Boe: *Back Together*. In the absence of 'real' stage shows, these live recordings provide a spectacular stage experience which audiences thoroughly enjoy.

So that seating can be safely allocated, tickets must be booked in advance. Tickets for all events can be booked online at www.mowlemtheatre.co.uk by calling **0333 666 3366** (telephone booking available 9 - 5pm Monday to Friday) or by visiting the Box Office on Mondays and Fridays between 10.30am and 1.30pm.



Situated at the start of Dorset's World Heritage Jurassic Coast, Swanage Pier is part of the unique Victorian history of the town.

After being closed due to Coronavirus, the Pier reopened on Saturday 4th July, with all the necessary measures in place to ensure the safety of volunteers, staff and visitors. It was great to welcome everyone back, either to enjoy a return boat trip to Poole, fishing, diving or just a breath of fresh air and great views from the end of the Pier. On Friday 2nd October Storm Alex brought heavy rain and high winds, with waves coming over the lower deck of the Pier causing some damage to the lower landing stage.

Along with this storm damage, the Pier suffered a loss of around £40,000 of vital income, due to Coronavirus. This makes your support vital to the future of the Pier.

If you would like to make a donation please visit:
<https://www.swanagepiertrust.com/support-us>





The square and outfield were more than ready to start the truncated season, thanks to the efforts of Groundsman Ron Barker and Dave Morton. Congratulations to Dorset Cricket Board for organising a mini league competition over six Saturdays from August 1st onwards. Hampshire did not do this. There was much demand to play in these games, in the two preceding friendly matches and in the Youth Matches. We were able to enter a 3rd XI for the first time. We finished in mid table in all three divisions.

A previous arrangement with the Town Council and the Allnat Centre led to the development of another playing area on the field behind the pavilion. Most of the development of the small square there was done by Craig Wells and Sam, his son.

The special arrangements for Covid-19 worked well. The only access to the pavilion allowed was for toilet use and for one person at a time to order drinks from the bar. All relaxation and drinking was done on the large area of decking outside the pavilion and on the outfield below. Without a fine summer, this would not have been possible.

Tributes are due to the Club Chair Ron Barker, to the Youth Secretary Tim Ives and a hard working committee for keeping the spark alive during the fallow months of April, May and June. Without their enthusiasm, players might well have drifted away, as happened to some other clubs. As it was, we really enjoyed ourselves.

Swanage Cricket Team Reports

The **1st XI** finished second in their mini-league. The **2nd XI** finished third in their mini-league. The **3rd XI** finished fifth in their first-ever season. The **Women's Section** has been going from strength to strength. Sadly, the summer saw training only as we continue to look forward to the future. The **Junior Players**. From our U8s playing their first games right up to the numbers of juniors and former juniors playing across the adult teams, it has been a season of huge achievement, despite it being so short.



The photograph shows the players in the first ever 3rd XI match on this field in a friendly game against Poole on July 18th, where most of their matches were played.



Save Our Service Appeal

Randy Coldham, the Swanage Railway's volunteer fund-raising chairman, said: "The 'Save Our Service' Appeal is the foundation of the Swanage Railway's future and will allow our much-loved heritage line – rebuilt since 1976 – to be an important contributor to the Isle of Purbeck economy, and its tourist industry, for many years to come.

"The cornerstone of the Swanage Railway's survival, the '**Save Our Service**' Appeal has reached £300,000 which is a magnificent achievement for which we thank all the donors for their splendid effort.

"The recent and much appreciated £233,200 grant from the Government's Culture Recovery Fund for upgraded passenger information and booking systems – as well as for continued Covid-19 protection measures – does not cover the day to day running and maintenance costs of the Swanage Railway.

"The '**Save Our Service**' Coronavirus survival appeal is vital because it will help to ensure that the Swanage Railway can survive through the winter and be ready to provide whatever heritage train service will be allowed next year.

"We're very grateful and humbled by the public response to our '**Save Our Service**' appeal which is vital because our restricted train service of fewer trains – due to the need for cleaning and longer boarding times with allocated seating – is less profitable with fewer seats available to maintain social distancing and keep our passengers safe.

"**The Swanage Railway is still fighting for its survival in these extraordinary and unprecedented times. Several generations of dedicated volunteers have rebuilt the line from nothing since 1976 and there is still so much more to achieve,**" added Randy who is a volunteer Swanage Railway signaller. **The Swanage Railway carried more than 200,000 passengers in 2019 and contributed more than £15 million a year to the Isle of Purbeck economy.**

Donations

To find out how to make a donation, please go to: www.saveourservice.co.uk or see Swanage Railway's Facebook page.

DORSET LIBRARY HOME DELIVERY SERVICE

Although our much-loved Home Library Service had to be suspended due to the Coronavirus situation, we are now providing a temporary non-contact Doorstep Delivery Service to those that cannot easily get to their local library, either short term or long term.

Our volunteers have strict safety guidelines and all necessary risk assessments have been carried out. Books are chosen by staff at each library, based on individual preferences, and made ready for our volunteers to pick up and deliver to our clients' front doors. The volunteers will not enter the house, and they will keep a safe distance at all times; they can also pick up books and return them to the library.

This service is entirely free and is available across Dorset and BCP areas. We are keen to let more people know that it is available to them if they find themselves unable to get to the library.

**To find out more please contact Maria Jacobson,
Service Manager Dorset Home Library Service, on
01305 236666 or 07786 635154, or
e-mail**

maria.jacobson@royalvoluntaryservice.org.uk



SWANAGE LIBRARY



SWANAGE LIBRARY IS OPEN! Please come in and borrow some of the fantastic new books we have – brand new titles are arriving every week. We are open on Mondays, Wednesdays, Fridays and Saturdays 9.30am – 1pm (with last admissions at 12.45pm). We are currently closed in the afternoons so that staff can fulfil Order and Collect orders as well as discharge and shelve the books which have come out of 72 hours quarantine. If you can't make it into the library, please do make use of this service as you can order up to 10 items, specify authors/topics and then let library staff pick your books/DVDs/audiobooks for you. An afternoon slot is then arranged for yourself or someone to pick up the books on your behalf. Telephone 01305 228400 or visit

<https://www.dorsetcouncil.gov.uk/libraries-history-culture/libraries/library-services-during-covid-19/dorset-libraries-order-and-collect.aspx>

We have had some lovely feedback from customers about this service as many have been introduced to new authors that have become firm favourites on their reading lists!

BREAKING NEWS: printing and photocopying services are available as of now. Please bring in the correct change whenever possible and sanitise your hands before handing over money to staff or using the photocopier/printer. Please inform a member of staff that you wish to print and they will explain the slight change in how this now works.

Finally, please be rest assured that you can visit Swanage Library safely as we are only allowed 8 people in the building (including staff), at one time and masks must be worn too. We also frequently clean the self-service machine, computers and high touch points such as handrails. If you want to visit with children, only your family will be in the children's library at any one time, so hopefully this will feel a safe environment to visit once again.



Rotary  Swanage & Purbeck



Swanage & Purbeck
Development Trust

Swanage and Purbeck Rotary & Swanage & Purbeck Development Trust Working Together

In late May 2020 Swanage and Purbeck Rotary and Swanage and Purbeck Development Trust joined forces to support the Food Friendly Club (FFC) who had been providing food cooking sessions for local families in need of a bit of extra help.

With the onset of Covid-19 it was not possible to continue the face to face sessions but FFC decided to provide food bags containing a recipe and all the ingredients for people to cook and enjoy a family meal together.

Rotary and SPDT were approached to support this initiative and were pleased to be able to support a local service in Swanage by working together.

With grants from the Dorset Community Foundation and Rotary and the support of a dedicated team, over 750 bags have been prepared at Herston Village Hall and distributed through the schools to local families.

Sadly, it will be necessary to stop this service at the end of October 2020 as funds have run out and Herston Village Hall will be closing for refurbishment.

Both Rotary and SPDT are keen to maintain links with the Friendly Food Club and are 'not shutting the door' on this worthwhile and needed service so will be fundraising, seeking further grants and a new venue for food bag preparation. Any financial help would be gratefully received, with donations paid to SPDT, so that we can continue to support local families during these difficult times due to the pandemic.

Please contact David Williams SPDT Treasurer.
d.s.w1@btinternet.com if you wish to make a donation.

Thank you.

Maggie Hardy and Kim Gallagher





Need Advice?

Purbeck Citizens Advice is Here to Help!

We provide free, independent and confidential advice and information whatever your question.

Advisers are available 5 days a week to give advice on the phone or by email.

We offer a full range of up to date advice, including help with:

- Benefits entitlement and claims
- Debt management, budgeting and income maximisation
- Employment advice including furlough, Statutory Sick Pay and rights when laid off work
- Advice for the self employed including the Income Support Scheme
- Energy and water advice, support and schemes
- Housing and advice if at risk of homelessness
- Referrals for charitable support or to food banks

Purbeck residents needing advice can phone Dorset Adviceline on **03444 111 444**, 10am-4pm weekdays to talk to an adviser. Alternatively, you can use our webform at www.purbeckadvice.org.uk for email or telephone call-back, and access a wealth of self-help advice online at www.citizensadvice.org.uk



Swanaage and Purbeck Rotary are continuing to try and maintain their activities as far as is possible in these uncertain times.

Planning is in full swing for the Christmas activities that Rotary traditionally puts on, in anticipation that they will be able to go ahead, and full details will be published in early November.

October sees World Polio Day on 24th, and this gives us the opportunity to reflect on the incredible role that Rotary has played in the eradication of polio worldwide. When the 'End Polio' campaign was launched by Rotary International in 1987 there were over 1,000 cases of wild polio every day around the world. Thanks to the hundreds of millions of pounds raised by Rotary clubs, including our own, since then, and the support of the Bill and Melinda Gates Foundation who have double matched Rotary's contributions, there are now fewer than 100 cases a year in just two countries. A wonderful achievement.

Three members of the Swanaage and Purbeck Club, Ron Emmitt, Sue Whitton and Maggie Hardy were able to attend a Polio National Immunisation Day in Delhi several years ago. The self-funded, memorable trip gave a great opportunity to witness first-hand the eradication programme and to bring back important information to the Club on the worldwide work of Rotary.

If you'd like to find out more about Rotary, head to: www.swanage Rotary.org

Steve Parsons

President, Swanaage and Purbeck Rotary Club



Carer Support
Dorset
A Network Partner of
**CARERS
TRUST**

We are here for you.



Twitter @CarersDorset
Facebook/CarerSupportDorset
Call us free on 0800 368 8349

Join our free **Virtual Cuppas** - alternate Wednesdays, 2pm-3pm

Register for our **Here to Talk** service by calling us FREE on **0800 368 8349 (Mon - Thurs 9.30am-4.30pm, Friday 9.30am-4pm).**

Go to our website www.carersupportdorset.co.uk to find more information, advice and resources.

We are recruiting for a full time Carer Adviser and full time Young Carer Co-ordinator, details here: <https://www.carersupportdorset.co.uk/about-us/job-opportunities/> Please spread the word amongst your friends/colleagues.

Carer Support Dorset is an independent charity that provides free and confidential support to unpaid carers of all ages across Dorset.

0800 368 8349

www.carersupportdorset.co.uk



The Cinnamon Trust needs more dog walking volunteers in Swanage

The Cinnamon Trust is the national charity whose wonderful volunteers help people over retirement age and those in the latter stages of a terminal illness by offering all kinds of pet care. We are looking for dog walking volunteers to help a resident of Swanage and their dear little dog who would love to go for a good walk.

Many elderly or ill pet owners worry about their ability to provide proper care for their animals and start looking to rehome what may be their only companion. This is where our national network of dedicated volunteers step in to offer support enabling them to stay together. We'll walk the dog for a housebound owner, we'll foster pets when owners need hospital care, and even clean out the bird cage or litter trays.

If you are interested in becoming a volunteer, you can download our volunteer registration form from our web site www.cinnamon.org.uk or email us at appeals@cinnamon.org.uk If you would like to have a more in-depth chat about becoming a volunteer, please call us during office hours (Monday-Friday 9am-5pm) on **01736 758 701**, or you can check out our website www.cinnamon.org.uk for more details.



The Cinnamon Trust is a Registered Charity No: 1134680. The Cinnamon Trust is a limited company registered in England and Wales. Registered Office: 10 Market Square, Hayle, Cornwall, TR27 4HE. Company Number 07004861



Campaign Update: Care Home Visits

As you will know, we have been calling on Government to address the impact of coronavirus for people affected by dementia. One of the biggest challenges we have faced is getting the Govt to commit to improving visits for people affected by dementia in care homes. So an exciting update to share.

NEW PLAN

On 13th October, The Dept of Health & Social Care (DHSC) announced they are developing a plan to pilot key worker status for people in care homes to have visits from their loved ones. This is something that we and other organisations have been calling for since April. Without your help, we wouldn't have gotten this far - thank you! With 70% of care home residents living with some form of dementia and evidence that a lack of contact is causing decline in those with dementia, this will make a great difference to so many families.

NEXT STEPS

Now we need acceptable timescales on when we can expect the Pilot to launch.

WHAT YOU CAN DO?

More than ever we need to show the government the impact lockdown has on people affected by dementia. If you haven't already, please share your reality of lockdown. We will ensure as many of these stories as possible are put in front of the right people in parliament.

BEST WISHES - ALICE AND THE ALZHEIMER'S SOCIETY CAMPAIGN TEAMS

Contact Details:

Telephone: 0330 333 0804

Or email: change@alzheimers.org.uk



The 'Wareham Whalers', a well-known local musical group raised an amazing £1,000 for the Friends of Purbeck MS. They have been great supporters of our charity over many years, helping us to keep our transport on the road. This was presented at Wareham Quay to myself and John Smith, Deputy Chair.

We have also received monies from Albert Marsh funeral directors in memory of the late Peter Downs a long-time member of our group whose late wife Jeannette was a person with MS.

Our group continues to help those in our area with MS and their families where possible and we hope that when the COVID situation allows us to return to "normal" once again we will resume our social meetings and fund raising events.

Thank you all for your support.

Carol Turner Chair - Friends of Purbeck MS

Our Contact Details:

Carol Turner Chair 01929 556761

email. turnermc07@gmail.com

J.Smith Deputy Chair

email john52wsmith@yahoo.co.uk

Gail Taylor Secretary

email gailtaylorulwell@hotmail.co.uk

Debbie Dunford Welfare Officer

email debbiedunford148@gmail.com



'The Wareham Whalers' singing/musicians group who recently raised £1,000 for Friends of Purbeck MS.



Many of our volunteers who normally befriend an isolated person by calling on them once a week for tea and a chat have been forced to only maintain contact via the phone over the last few months. However, some are now able to visit in the friend's home and some others are able to meet outdoors, go for a walk or visit a café together.

This human contact has been ever more valuable during the pandemic. But this may all be about to change again as we enter a more uncertain time during a rise in infections across the country. Whatever unfolds over the coming weeks do get in touch with us if you either know someone who is alone and would like someone to call for a chat or if you would like to volunteer to become one of our visitors.

As a volunteer you only need to offer one hour a week or a fortnight to bring some happiness to a lonely or isolated person.

If you would like to get involved, please get in touch with **ROGER SEAMAN** on 07498

743036 or email at

lvs.volunteers@outlook.com

We would love to hear from you.



Photograph by Gwenda Yeomans



**Dorset
Community
Foundation**

Raising funds for those most in need

SURVIVING WINTER GRANTS

Surviving Winter grants of £200 are now available for households experiencing fuel poverty in Dorset.

Every year Dorset Community Foundation runs the **Surviving Winter Campaign**, raising money to support older and vulnerable people in fuel poverty (age 50+) who cannot afford to adequately heat their homes over the winter. This can have a devastating impact on health, especially for elderly people and those with existing conditions or undergoing/recovering from medical treatment.

We especially encourage those who receive the Winter Fuel Allowance to donate this to the appeal, if they can afford to do so - enabling them to support a peer who lives locally and is in less fortunate circumstances.

To apply for a Surviving Winter grant or to support someone to do so, please either contact your local Citizens Advice office, call the **Citizens Advice dedicated fuel poverty advice line on 01929 775500** or email their dedicated fuel poverty email address at SW@cabinet.org.uk

Citizens Advice can also provide additional advice and support on fuel poverty issues and other related concerns, including other possible sources of financial support or home improvements to help lower fuel bills.

For more information and to donate to the appeal please see our webpage:

<https://www.dorsetcommunityfoundation.org/appeals/surviving-winter/>

SWANAGE SPECIAL AMBULANCE CAR



Remember to sign and share the petition:

<https://you.38degrees.org.uk/petitions/save-swanage-ambulance-car>

**healthwatch
Dorset**

'Mental Health - It's OK to talk' Local people share their mental health stories in a new film

On 10 October (World Mental Health Day)

Healthwatch Dorset released a new film showing local people sharing their mental health stories. This was to raise awareness of the challenges people are facing during this pandemic and the support that makes all the difference - especially the value of talking.

Healthwatch Dorset volunteers, Shannon, Will and Elaine, feature in the film, sharing their very different personal stories. They chat candidly about the issues they have faced, and the ways in which they have learnt to manage their mental health.

Shannon spent most of her 20s in a wheelchair due to a chronic back problem, but thankfully, following three major operations, she has now regained almost full mobility. Shannon said: *"I wanted to take part in the film because I knew that talking about my mental health on camera would take me out of my comfort zone, and by talking about it, it would help me and other people."*

Will lost family members at a young age and this affected his mental health. They both believe that talking to their doctor and their friends helped them in their struggles.

Elaine was left in a coma after a sudden illness and she talks in the film about the subsequent impact this had on her physical and mental health. She struggled for a long time, before eventually confiding in a friend about how she was feeling; talking made a difference. Elaine also attributes a lot of her recovery to nutrition and exercise.

Lucy Cribb, Healthwatch Dorset Engagement Officer, said: *"Healthwatch Dorset talks to local people about their health and social care experiences, to find out what works well and what could be improved, so that we can inform those responsible for delivering and improving local services. Real life stories are a powerful way to illustrate people's health and social care needs."*

YOU CAN WATCH THE FILM HERE :

<https://healthwatchdorset.co.uk>



AUTUMN

Photographs by Gwenda Yeomans

SWANAGE SPECIAL AMBULANCE CAR



Remember to sign and share the petition:

<https://you.38degrees.org.uk/petitions/save-swanage-ambulance-car>



HARMANS CROSS VILLAGE HALL

LATEST NEWS

Harmans Cross Village Hall reopened on September 1st. A Covid risk assessment had been carried out and Covid secure measures put in place such as signage, sanitiser units and track and trace.

Limited permitted activities have resumed such as Cath Newman's yoga, which must be pre-booked, table tennis and junior martial arts.

Happily we were able to host one wedding before restrictions changed and guest numbers were further limited to 15. Our wedding couple had lovely September weather and their guests enjoyed a sit down meal at socially distanced family tables and instead of music and dancing enjoyed a pub quiz and a film. Certainly a wedding with a difference!

Starting on Sunday 18th October, The HX Church service has resumed on Sundays at 6pm. This is a short, informal friendly service to which everyone is welcome. Chairs will be socially distanced in the main hall and masks must be worn.

I am sorry to say that Stalls at the Hall have been postponed for the rest of this year. Hopefully they will recommence in spring 2021.

Clearly we will be living with Covid for some time to come and whilst some activities are happening in the hall there is nowhere near the activity that would normally be happening.

During this time we remain keen to build our team of volunteers ready for 2021. If you can help with hirer let-ins, running movie nights or you wish to join the committee - we currently need a minute secretary to help our committee secretary and new committee members are always welcome.

If you are interested in getting involved and would like to know more please contact **Alison Clough** on alison.an.clough@btinternet.com or ring 07768 558341.

SNIPPETS FROM STUDLAND



STUDLAND PARISH COUNCIL Forthcoming discussions with Dorset Council Highways over traffic management and parking in the village. Current traffic regulation orders i.e. no parking may be revisited. The Council will be contributing to the emerging transport strategy being initiated by the Purbeck Transport Action Group. 2020 has seen issues of increased traffic and limited co-ordination of traffic flows in particular on and to the main roads into Purbeck.

Like other local councils, Studland is responding to the consultation on the Planning White Paper. The main concerns are the radical handing over of much of the planning process to the development lobby, and the loss of local democracy in that local councils will be unable to comment on planning applications normally once the planning zone has been agreed. The designation of the protected zone may be difficult to defend given historic examples of compromised designations e.g, Dorset Council allowing up to 100 trees to be felled in the Area of Outstanding Natural Beauty (AONB) in the Langton area.

Tree work applications at Church Cottage and the Pig on the Beach, both in the Conservation Area, are concerns. Why do owners place such a low value on trees?

The Parish Council is seeking the re-instatement of the BT phone box at Shell Bay.

Representations against the proposed increases in ferry toll fares will be made at the virtual Public Inquiry starting on 16th November 2020.

For more info go to:
www.studlandparishcouncil.org

THE PURBECK SOCIETY has expressed interest in contributing to the National Trust and the AONB joint project bid for the heathlands area from Studland to Wareham. Members of the committee are willing to assist with archaeology research.

Support has been expressed for 'Planet Purbeck' - the environmental umbrella group which was recently set up.

The Purbeck Society is affiliated to the Dorset Campaign to Protect Rural England (CPRE). Both support a Dorset National Park.

There are no immediate plans to resume meetings due to the CV19 pandemic. Plans are being considered for alternative means of communicating the programme of winter talks.

For more info go to:
www.purbeckociety.co.uk

THE CAMPAIGN TO PROTECT RURAL ENGLAND Major concerns have been expressed over the proposals contained in the Planning White paper. These concerns centre on a flawed and unreliable algorithm for housing numbers, the imposition of housing targets, a lack of detail on zoning, and the loss of local democracy. It is rather unusual to have a Planning White Paper that places ideology above evidence for its proposals.

The Dorset CPRE report on Dorset Housing Needs Evidence can be found on <https://dorset-cpre.org.uk>

Dorset CPRE is keen to work with others to create a green recovery plan from the CV19 pandemic. The role of local business resilience, the promotion of Dorset niche products and services plus generating local employment are major challenges. These challenges set against the emergencies of climate, ecology, and health require new ideas and new ways of working especially if Dorset and Purbeck are to aspire to sustainable tourism - whatever that means.

For more info go to: www.cpre.org.uk





'Aquarius', the ladies club based in Corfe Castle has now had its first face to face Committee Meeting in the Village Hall. It was much friendlier and easier than using Zoom, despite the wearing of masks! Our members October Zoom meeting was much better attended than previously, as people gradually feel more capable of trying Zoom. It was a very interesting talk, with illustration, by Richard Sedgley on 'Sir Bevois of Hampton,' a medieval knight from Southampton who became quite a folk hero with tales of 'daring do' in the time of the Crusades!

Unfortunately we decided to cancel our Autumn Coffee Morning due to insufficient members feeling able to help or attend in the present situation. This means even less going into our local charities fund so we have now agreed to carry these over till next year. We are also holding our membership fees over into the coming year.

Following the medieval theme we are intending having a guest Zoom meeting on Nov. 3rd where we will learn more about and hopefully see some archery demonstrations. This should be quite an interesting thing to manage via Zoom!!

We are still hoping that our Dec. meeting will be in the hall making festive garlands with a fun presentation of our 'Covid Christmas' Limericks, although the venue is subject to possible change!

Despite the present difficulties the Strollers and Walking groups have managed to get out and about in groups of 6 and one of the Book Clubs will also use the Village Hall for a meeting soon.

Our main excitement is the imminent launch of Community Projects making Twiddle Muffs and Blankets for people with dementia and a sewing montage for a more permanent display, which will be spearheaded by our Sewing Group. We feel these will not only benefit the local community but provide a satisfying focus for our members.

If you are interested in joining us in the future please contact me on **01929 480007**

CHRISTINE KEMP (Aquarius Joint Chair)

SWANAGE SPECIAL AMBULANCE CAR



Remember to sign and share the petition:

<https://you.38degrees.org.uk/petitions/save-swanage-ambulance-car>



Corfe Castle Parish Council

OCTOBER NEWS

Swanworth Quarry Extension

The Parish Council had an initial discussion on the planning application by Swanworth Quarry near Kingston to extend the life of workings for another 20 years. The application will probably not be determined by Dorset Council until early in 2021 as further work on the implications for water supply have been requested by the Environment Agency. There has been an objection by the board overseeing the Area of Outstanding Natural Beauty.

The Parish Council has several concerns such as the number, weight and size of lorry movements and respect for speed limits, contributions towards road maintenance and community facilities, progress towards zero carbon targets, help with providing alternative cycle routes to Kingston Hill etc. if these concerns can be met, the Council resolved after a vote that it was minded not to object to the extension. Suttles the owners of the Quarry have responded constructively to the concerns raised.

Impact of summer visitors

The Council reviewed the impact of Covid-19 on the area so far. Up to October, Dorset had relatively low levels of virus transmission, but numbers are increasing rapidly since the start of October.

The village received large number of visitors with implications for overcrowding in the centre. We encouraged visitors to use our playing field and playground for leisure and picnics and increased the level of cleaning in the playground and the toilets. Alas, the waste bins were overwhelmed and litter became an issue in the centre of the village. Dorset Waste had operational issues in taking away rubbish as often as planned.

We are looking towards next year when visitor numbers may still be very high and we will see what we can do to reduce the litter issue including less take-away waste.



DOMESTIC ABUSE CAN AFFECT ANYONE

WE ARE HERE TO HELP:

YOU FIRST (Dorset Council)

0800 032 5204

OUTREACH (POOLE-BOURNEMOUTH)

01202 710 777

WOMEN'S AID

email – helpline@womensaid.org.uk

24HR NATIONAL DOMESTIC ABUSE -

HELPLINE 0808 2000 247

DORSET POLICE in an emergency **CALL 999**
or go to

www.dorset.police.uk/abuse-help



ALCOHOLICS ANONYMOUS® is a **fellowship of men and women** who share their experience, strength and hope with each other that they may solve their common problem and help others to recover from alcoholism. ... Our primary purpose is to stay sober and help other **alcoholics** to achieve sobriety.

This is a very unusual time. It is stressful for many people in many new ways. Some people turn to alcohol to help them cope and get through it. This can be more of a danger than a help to some of us. If you think you have a problem with alcohol we can help:

IF DRINK IS COSTING YOU MORE THAN MONEY

then we can help you. Please telephone our free Helpline today:

0800 917 7650



Harm Reduction advice for people who use Alcohol

This advice is important during the Coronavirus (COVID-19) pandemic. If you are drinking heavily, you are at increased risk of the health impacts of coronavirus (COVID-19). You may want to cut down or stop drinking to help improve your immunity, or because your supply of alcohol is running out.

Self-isolation may lead some people to drink more alcohol than usual.

If you are worried about your drinking levels increasing, you can contact any one of the following for help and support:

LiveWell Dorset to talk about how to reduce the **amount of alcohol you are drinking.**

Call 0800 840 1628 or 01305 233 105

www.livewelldorset.co.uk

Local alcohol treatment services are open and can provide further advice and support:

Dorset including Christchurch (REACH):

0800 043 4656

Poole (EDAS/SMART): 01202 735777

Drinkline the national alcohol helpline

Call 0300 123 1110

weekdays 9am-8pm week end 11am-4pm

Drinkaware -

<https://www.drinkaware.co.uk/alcohol-support-services/>



If you are concerned about a young person please #TellSomeone

A new campaign is asking children and young people to tell someone they trust, or call national charity Childline, if they feel unsafe in their environment during the current conditions associated with Covid-19.

For some children, this period of isolation has left them without their usual support systems such as teachers, extended family and friends. This lack of regular contact with trusted people can put children at increased risk of abuse or neglect.

Please check on family, friends and loved ones and contact the relevant teams should they or you need support.

If you use social media, please share the #TellSomeone messages. This could help a child or young person who is stuck in a situation where they feel unsafe to seek the help they need.

Child Abuse & Neglect

Child abuse is where a child does not receive the proper standard of care expected from a reasonable parent or carer and includes physical abuse, sexual abuse, emotional abuse or neglect. Contact us:

help@nspcc.org.uk Free Helpline: 0808 800 5000

pan-dorsetscp@dorsetcouncil.gov.uk

Telephone: 01305 228866 or 01305 221196

Or <https://www.dorset.police.uk/do-it-online/>



SCAMS ARE INCREASING PLEASE READ THE FOLLOWING CAREFULLY

News from Trading Standards

Warning about scams

Fraudsters are increasingly targeting the public and organisations with emails, texts, phone calls and WhatsApp messages offering advice and treatment for the coronavirus, as well as setting up fake websites selling products and offering 'cures'.

Scammers have also been setting up bogus websites asking for donations for victims or promoting awareness and prevention tips.

Cold callers have been contacting organisations suggesting they must have certain measures in place by a certain deadline.

To help members of the public protect themselves from becoming a victim of fraud, the advice from Dorset Council Trading Standard is:

- Be sceptical if you receive an email, text or WhatsApp message about the coronavirus, and never click on any attachments or links
- Never provide personal data such as your full name, address and date of birth – scammers can use this information to steal your identity
- Don't allow yourself to be pressured into donating money, and never make donations by cash or gift card, or send money through transfer agents such as Western Union or Moneygram
- If you think you've been the victim of a scam, then speak to your bank immediately and report any fraud to Action Fraud on 0300 123 2040

Further information on dealing with scams and fraud is available from the Citizens Advice Consumer Service at <https://www.citizensadvice.org.uk/consumer> or by calling their new freephone number:

0808 223 1133.